

# WEATHER

	Min.	Max.	Precip.
Wednesday, Jan. 9	36	41	0.74
Thursday, Jan. 10	39	40	0.01
Friday, Jan. 11	34	53	0.78
Saturday, Jan. 12	23	52	0.13
Sunday, Jan. 13	14	25	0.00
Monday, Jan. 14	10	17	Trace
Tuesday, Jan. 15	11	20	Trace

ONE HUNDRED-FIFTH YEAR—No. 31

12 Pages This Week

Plus 4-Page Supplement

CHELSEA, MICHIGAN, THURSDAY, JANUARY 16, 1975

15c per copy

SUBSCRIPTION: \$6.00 PER YEAR

# The Chelsea Standard

## QUOTE

"When we try to avoid one fault, we are led to the very opposite, unless we are very careful."  
—Horace.

## Wrestlers Place 2nd In Parma Tourney

Chelsea wrestlers continued their winning ways this week by posting a second-place showing in Saturday's Western High School Invitational Tournament and downing Milan Thursday in South-eastern Conference action.

In what Coach Richard Bareis called "a long day of wrestling" Saturday, Chelsea grapplers had to settle for the runner-up's trophy behind Jackson High school.

Final standings showed Jackson outdistancing the second-place Bulldogs with 83½ points to Chelsea's 65. Following were Jackson Parkside, 63½ points; Dexter, 59; Grand Rapids Ottawa Hill, 51; Western, 50½; Eaton Rapids, 38½; Albion, 34½; Saline, 33½; Lumen Christi, 30; Tecumseh, 21; Brighton, 11; Lansing Waverly, 3; and Lakewood, 3.

"It was a very tough tournament," noted Coach Bareis. "We had some disappointments, but overall, it was a strong showing for the Bulldogs."

Chelsea's only champion was at 126 pounds, in which captain Mike Agopian won 8-2 in the finals.

Three Bulldogs hauled in second-place finishes: Jim Stahl, wrestling at 107 pounds, won two close decisions before losing a tight final match, 7-6, in the last second of the contest; Darryl West wrestled his way into the finals, only to drop a tough 5-2 overtime match to Mark Kohler; and Tim Reed at 155 pounds scored a 3-0 win over the second-seeded wrestler to get into the finals, but lost an 8-0 match to Mike Parrott of Jackson.

Dennis Bauer, at 169 pounds, and Kermit Sharp, at heavy-weight, managed third-place finishes for the local squad. Each

earned two victories and one loss. Doug Reed recorded Chelsea's other points with a win at 132 pounds.

Bulldogs posted their third SEC win Thursday in a rather slow affair that featured only three pins.

Dave Stahl recorded a forfeit victory for the Bulldogs at 100 pounds to begin the action. At 107 pounds, Jim Stahl dropped a 6-4 decision.

Kevin Kelly, making his first appearance at 114 pounds, suffered a pin loss. At 121 pounds, Nick Keiser started out slow, but gained control of the match to earn a 6-2 decision. At 128 pounds, Mike Agopian scored a 10-1 decision.

At 134 pounds, Doug Reed and Steve Rangel hooked up in a strange match that ended in a 3-3 draw. Mark Pennington then came up with an 8-4 win at 140 pounds.

Darryl West then provided some spark, tearing into his opponent to gain an early second-period pin. Tim Reed followed with a 6-3 decision at 155 pounds, and Dennis Bauer boosted his record to 32-11 by earning an early second period pin. Leon Brown, in his first varsity match, wrestled quite well in a 10-6 loss. Kermit Sharp then closed out the contest with a 13-0 superior decision.

Despite the lacy victory, Coach Bareis expressed some concern about the quality of the wrestling. "A coach shouldn't complain when a team wins, but some of the team didn't wrestle up to their capacity," Bareis said. "Hopefully, it was just a flat night."

Thursday Chelsea matmen will travel to Novi for a tough match against the developing Wildcats, who are currently undefeated in league action.



6th IN STATE: Chelsea's novice debate squad, which took first place in State League novice competition, last Saturday earned a sixth place standing in the Novice State Tournament. The winning team members pictured above are, seated, Kim Brown and Barb Hinderer, and standing, Rob Wenk, Steve LaBarbara, and Coach William Coelius.

## Novice Debaters Place 6th in Saturday State Tournament

Chelsea High school's novice debaters, who cruised through their State League meets like seasoned pros, provided Coach William Coelius with a post-season thrill Saturday when they placed sixth in the Novice State Tournament.

Recording a 5-3 over-all record in the competition among all novice teams in the state were Kim Brown and Rob Wenk, affirmative, who earned a 3-1 standing, and Steve LaBarbara and Barb Hinderer, negative, who recorded a 2-2 performance.

Final standings in the tournament showed Ann Arbor Huron on top of the state, followed by War-

ren Woods, Ann Arbor Pioneer, Jackson Parkside, Belleville, and Chelsea.

In the afternoon's competition, Chelsea defeated Belleville, Troy, Dearborn, Royal Oak, and Warren. The local team was topped by Warren Woods, Ann Arbor Pioneer, and Romeo.

"I was very pleased with the

team's performance," Coach Coelius reported happily Monday. "Anytime a team can end up in the top 10 in the state, it's a very good showing. It's particularly good in the case of novice debaters, because they're not separated into Class A and Class B—they all compete against each other."

## Cagers Soundly Trowned By Milan

Coach Tom Ballstrene had intended that his Chelsea Bulldogs play a slow, deliberate basketball game to defeat League-leading Milan last Friday. But the 84-41 trouncing that the squad took in actuality was something that he'd rather forget.

"The only good thing about that game," Ballstrene said Monday, "is that it's over."

Doubtlessly the end of that game couldn't have come soon enough for Ballstrene and his boys. In the first four minutes of play, the Big Reds, still undefeated in the Southeastern Conference, rolled up a 13-point lead that proved to be insurmountable both then and later on.

By half-time, the tally was a gloomy 40-22, and Coach Ballstrene began substituting.

"They pushed us out of our game plan immediately," Ballstrene lamented in citing the incredibly early 13-point jump. "We had intended to play slow and deliberate basketball, work the ball a lot, but instead we played heater-skelter, catch-up ball that turned into alley basketball."

Probably the most telling statistic of the dismal evening, Ballstrene pointed out, was the 43 turnovers that surpassed the team's total point output. "Obviously, no one can win when they're throwing the ball away like that," he said.

Key to Milan's dominance, Coach Ballstrene said, was their press, which completely stymied the Bulldogs. In addition, the coach noted, "no one played up to his potential. I was disappointed with the boys' performances—and I know they are, too. It was undoubtedly the worst game I've seen them play."

Ballstrene stressed that he retained confidence that the team can bounce back from the defeat. "Although our fundamental play was poor in this game, and we need to work on those fundamentals, I know that we're a good ball club," he said. "I believe we have the ability to bounce back from this."

"Bouncing back" was also stressed by University of Michigan Assistant Coach Jim Dutcher, who visited the team in the locker room after the defeat. Dutcher, whom Ballstrene coached under at Eastern Michigan University, told the disheartened Bulldogs that the big thing was "to forget the ball game and come back next week," Ballstrene said.

Although individual performances were not much to speak of, Ballstrene found room for praise in at least three of his players. Jack Hackworth, playing in his second game of the season after returning from an injury, provided "steady play," according to the coach, and appears to be "getting stronger and playing better."

Dave Watson and Rick Robbins also earned mention from the coach. "I was proud of their performances," he said. "They came in and shot very well from the foul line."

Game statistics showed that the Bulldogs hit at a 73 percent clip from the foul line, but could manage only 33 percent from the floor.

High point man for the evening was Gary Wonders with nine points. Also scoring were Rick Sweeney, eight; Dave Alber, seven; Jack Hackworth, six; Randy Guenther, four; Dave Watson, three; and Randy Davis and Rick Robbins, two.

Rebounders were paced by Rick

## New Commuter Train Service Begins Monday

Amtrak's newest and longest-publicized commuter train, dubbed the "Michigan Executive," will begin its week-day runs between Jackson and Detroit Monday morning, Jan. 20.

The new train, replacing Penn Central's current one-car train with two locomotive-hauled passenger coaches seating 110 passengers, will leave Jackson daily from Monday through Friday at 6:15 a.m. It will stop in Chelsea at 6:40 a.m.; Ann Arbor at 7 a.m.; Ypsilanti at 7:10 a.m., and arrive in Detroit at 7:50 a.m.

From the Detroit railroad station, a shuttle bus of the Detroit Department of Transportation (DOT) will provide connection from the station into downtown Detroit.

For evening return trips, the DOT bus will retrace its route through the business district and back to the station to meet the 5:25 p.m. evening departure.

Westbound stops will be scheduled at 5:55 p.m. in Ypsilanti, 6:10 p.m. in Ann Arbor, 6:30 p.m. in Chelsea, and 7 p.m. in Jackson. The new train, made possible by a state subsidy, is designed to handle 110 passengers initially. Ridership on the existing Penn Central service ranges from 75 to 90 passengers per trip.

Although the daily Chelsea-to-Detroit ride is priced at \$3 one way, Amtrak is offering a special monthly pass from Chelsea, round trip, for \$68.50.

Fare from Jackson one way is \$4, with monthly pass \$95; Ann Arbor, one way, \$2.25, monthly pass, \$54; and Ypsilanti, one way, \$1.75, monthly pass, \$48.

Plans for the improved commuter service between Detroit and points west were first brought to light in early September, when officials of the Michigan Association of Railroad Passengers (MARP) proposed that Chelsea volunteers join forces with MARP in restoring Chelsea's railroad depot, built in the late 1800s and unused for passenger service for 15 years.

Through the instigating efforts of MARP and local residents, the Chelsea station has been repainted in the historic colors of the Michigan Central Railroad, light green and dark green. Windows and framework of the building have been repaired and replaced, where needed, and a new roof has been installed.

Passenger waiting area of the station, which is still used primarily for storage by Gambles, is a small section to the right of the main station door.

Michigan Department of Highways and Transportation has budgeted some \$70,000 to underwrite two-thirds of the expected operating loss, through June, of the commuter, with Amtrak paying the final one-third. Amtrak and the Department of Highways and Transportation are also sharing capital outlay costs on a 1-2 ratio.

## Special Events Slated For March of Dimes

What is a March of Dimes campaign without peanut sales and a fashion show, you ask? Don't even bother wondering, because those items are now on the official March of Dimes schedule for Chelsea.

Peanut sales, annually conducted by irresistible local scouts, are planned for Friday, Jan. 31, and Saturday, Feb. 1 in the downtown area. A new item, March of Dimes balloons, will also be sold to support the campaign for those who aren't into peanuts.

Weber's will be the site this year for the county's annual March of Dimes fashion show on Feb. 1. Fashions will be provided by Jacobson's and admission is \$12.

Another event scheduled for the month is the annual WNRS radio

auction, which will be based at Briarwood's grand court on Jan. 25, and will feature items donated by merchants across the county.

Dime boards have also been placed in local establishments for contributions, and canisters should be placed in area businesses soon.

Mary Ann Rader, Chelsea march of Dimes chairman, notes also that local businesses should soon be receiving requests from the county for contributions, since this year all such mailings were done through a centralized computer by the county group.

## Benefit Cage Game Set With Lions

Chelsea High school faculty members will tangle with members of the big, bad Detroit Lions on Saturday, Feb. 8 in the local gym.

Among the Lions' gridders who will be spending time on the basketball court are Altie Taylor, Paul Newmoult, Mike Weger, Lem Barney, Chuck Woolton, Leon Crowwhite, and Jim Mitchell.

Starting line-up for the faculty stars is as yet under wraps.

The game is sponsored by the

## John Bacon Dies Friday at Local Hospital

John K. Bacon, 10966 Union St., Empire, died Friday, Jan. 10 at Chelsea Community Hospital, where he had been a patient since Oct. 21.

Born July 20, 1899 in Chelsea, he was the son of Jabez and Eliza Hook Bacon. He attended Olivet College and the University of Michigan before graduating from what is now Eastern Michigan University. He was married to Florence Klump on Feb. 26, 1922.

Mr. Bacon was a veteran of World War I, and for a number of years was Leelanau County Superintendent of Schools, prior to retiring in 1962.

He was a life member of the American Disabled Veterans; a member of the Maple City Post No. 199 American Legion; a member of the National Retired Teachers Association; and a member of the Veterans of World War I of the U.S.A.

He is survived by his widow, Florence; one brother, George of Lenexa, Kan.; one sister, Mrs. Harris (Dorothy) Fletcher of Urbana, Ill.; and several nieces and nephews.

He was preceded in death by six sisters, Mabel, Edith, Grace, Marie, Ann, and Nell; and three brothers, Donald H., Reynolds, and Benjamin.

Cremation has taken place. In lieu of a memorial service, those wishing to do so may contribute in his memory to the Chelsea Medical Center. Arrangements were by Staffan Funeral Home.

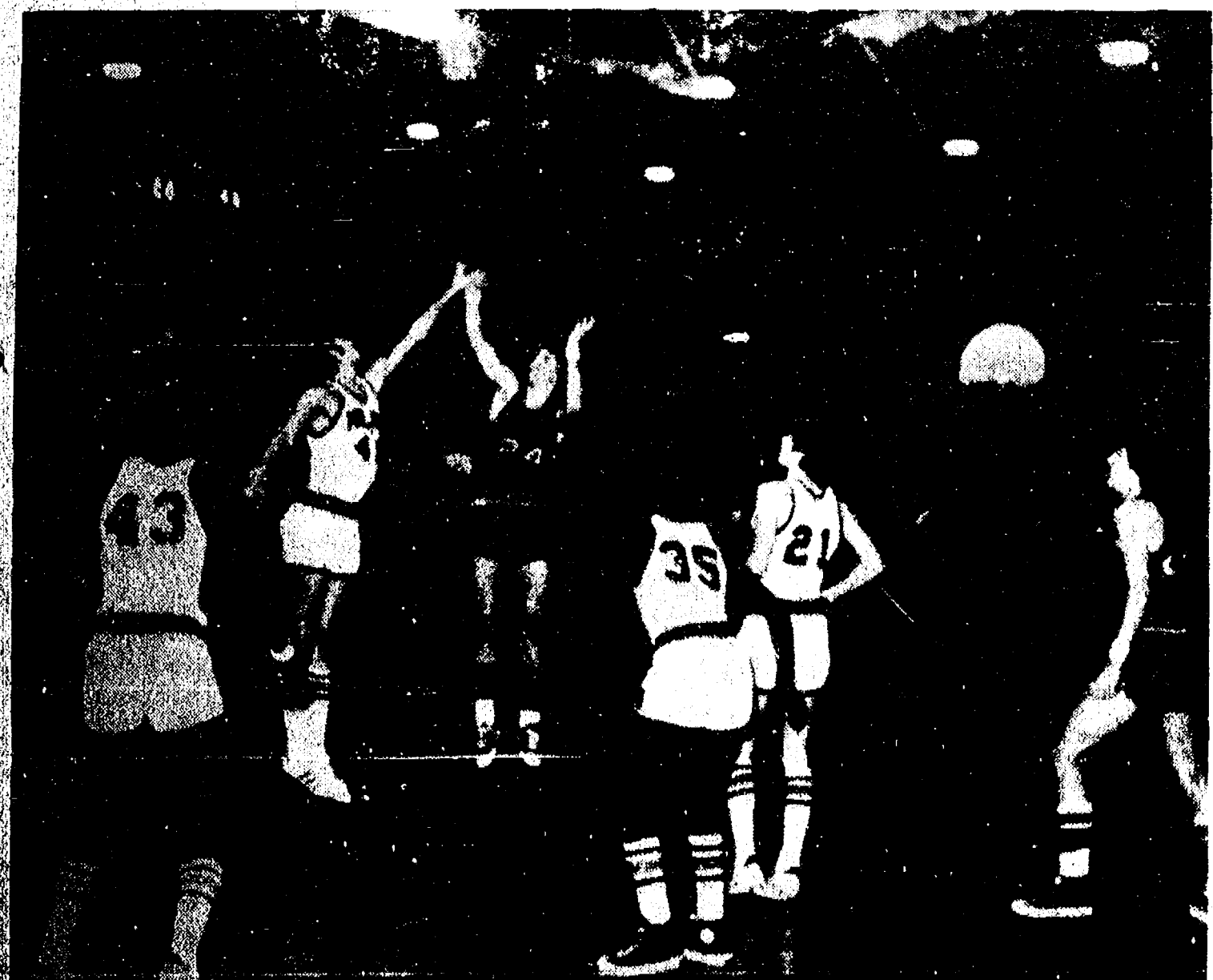
## Legion Post Repeating Ice Fishing Derby

Ice fishermen in the area can make a week-end of it next month, when Herbert J. McInnis American Legion Post No. 1 stages its second annual ice fishing derby Feb. 8 and 9 at Cavanaugh Lake.

Prizes will be awarded for first, second, and third places for pike, bluegills, and panfish. The contest will begin at 7 a.m. on Saturday, Feb. 8 and continue until Sunday, Feb. 9 at 4 p.m.

On Saturday, breakfast will be served at the Legion Home from 7 to 11 a.m., and lunch from 12 noon on, with refreshments available all day. A euchre tournament, open to the public, is slated for 7 p.m. Prizes will also be

(Continued on page six)



ALL UP IN THE AIR over this play are Randy (24) and his Milan counterpart in jump (24). Dave Alber (40) stands ready to assist, but things look grim for the Bulldogs at this point, as they trail 46-28 with 5:43 remaining in the third period.

## Kiwanis Club Will Assist Senior Citizens

Chelsea area Senior Citizens will again be able to use the help of Kiwanians in filling out their "Homestead Property and Sales Tax Credit Forms. Last year was the first year when older citizens were eligible for a tax rebate on their property taxes or a percentage of their rent. This year a credit for sales tax paid on food and prescription drugs may also be applied for.

A two-evening session will be held at the Chelsea Fair Center building on Monday, Feb. 3 and Tuesday, Feb. 4 at 7:30 p.m. for those who would like to be assisted by a Kiwanis Club member in filling out the fairly complicated forms. If you haven't received a form through the mail, you may pick one up at Chelsea State Bank.

For an appointment at an hour to suit your convenience, you may call any one of the following list of Kiwanis Club members: Julius Blaess, Louis Burghard, Herman Koenn, John Pierson, Robert Ponte or Wallace Wood.



RETIRING: Walter Scott, retiring from Chelsea Milling Co. after 29 years as plant superintendent, was honored Thursday by fellow employees with a dinner at Stivers. Scott was presented with a gold watch by those present.



## Uncle Lew from Lima Says:

DEAR MISTER EDITOR:

I see by the papers where the sale of new cars is down somepun awful, and it looks like they are pulling the hole economy under with em. This piece I read said ever 1975 car that ain't sold is costing a job in the car-making industry, and that fer ever car maker that loses his job three people are losing their jobs that supplies the car parts. Car dealers is like a bad cold. When they sneeze they spread germs over everybody, and if they get a sore throat from no sales the feller that makes the parts gits newmonia from no job.

Zeke Grubb was talking about how used cars was selling good now, and he recalled a few years ago when we was sending all our junk cars to Hungary for them to use the spare parts to keep their cars on the road. If the parts people giv' laid off as car sales drop, Zeke allowed, we might have to recall our junk. Zeke said he had come up with a idea fer the car makers that farmers and ranchers use with good results. Go ahead and make all the cars, and sell em to the Government. The U.S. Department of Automobiles could set production quotas and price supports to cover the cost of the car and provide work fer all the car makers and suppliers. The cars could be stored in big underground parking lots, or took out to sea and buried. The folks that is gitting laid off would have jobs and the Govern-

ment would save the cost of paying unemployment and welfare and git new cars in the bargain.

Clem Webster wasn't full agreed with Zeke's answer to what the car people call the overrun problem, but he said it weren't new with the farmers. He said he had saw back when some of the big papers was changing from metal printing to printing from film that the shop union had people making pages twict. They would make em in metal like their contract called fer, then throw the metal away and make em in film. The idea of make work has been around since them pharows kept thousands of folks to busy building pyramids to rise up agin em, was Clem's words.

Actual, broke in Ed Doolittle, there's ways to control folks that we ain't seen yet. Ed was talking about the way the Russians turn everthing into a tool to use agin us. They buy our wheat, and all kinds of pains hit us, from the price of a loaf of bread to cattle that we can't afford to feed. Back last fall, Ed said, the word got out that Russia was bidding on 500,000 tons of sugar, and our market went slap crazy. Now we're paying five times fer sugar what we were a year ago, and we're buying sugar from Mexico that we wouldn't use in normal times. And the Russians didn't even buy the sugar, Ed said, they just spread the rumor they might.

Personal, Mister Editor, I hope we ain't come to the day of Government by Russian rumor in this country. Suppose they start hinting about dealing in American gold like they have in Mideast oil?

Yours truly,  
Uncle Lew.

## Metropark Vehicle Entry Permits Now On Sale

Five Metropark offices of the Huron-Clinton Metropolitan Authority now have for sale the Metropark Annual Vehicle Entry Permits for 1975, which will be in effect from May through September.

The annual windshield-type stickers cost \$5 and with a special \$3 rate for senior citizens starting at age 62, with proof of vehicle registration.

These offices are: (1) Metropolitan Beach Metropark near Mt. Clemens; (2) Stony Creek Metropark near Utica; (3) Kensington Metropark near Milford; (4) Hudson Mills Metropark near Dexter; and (5) Lower Huron Metropark near Belleville.

These parks and five other Metroparks will also offer daily vehicle entry permits costing \$1 when charges begin in 1975. These parks include Marshbank Metropark near Pontiac, Dexter-Huron and Delhi Metroparks near Ann Arbor; and Willow and Oakwoods Metroparks in western Wayne County. Metropark Vehicle Entry Permits are used to help operate and maintain the existing parks and to provide new regional parks to serve the citizens of southeastern Michigan.

Public transportation, scheduled buses, bicyclists and walk-in visitors will be admitted free.

Snowblowers can ease the job of keeping driveways clear during winter months, but it is also one of the many machines that can generate a potentially hazardous noise level. When operating a noisy snowblower, it is best to wear protective ear plugs, warn hearing specialists.

## DID YOU KNOW?



## SAINT NICHOLAS

WAS BISHOP OF MYRA IN LYCIA ON THE COAST OF ASIA MINOR. HE LIVED IN THE 300's A.D., AND LATER WAS MADE PATRON SAINT OF SEVERAL EUROPEAN COUNTRIES WHERE A SPECIAL HOLIDAY IN HIS HONOR IS HELD EACH DECEMBER 6th. IN HOLLAND, THE NAME FOR HIM WAS "SINTERKLAAS" AND WHEN DUTCHMEN BROUGHT THE NAME TO AMERICA IT WAS EVENTUALLY CHANGED TO SANTA CLAUS.

## WOODPECKERS

LIVE IN ALL PARTS OF THE WORLD EXCEPT AUSTRALIA AND MADAGASCAR. THEIR TOES ARE ARRANGED SO THEY CAN CLIMB UP OR DOWN TREE TRUNKS. THEY HAVE LONG TONGUES WITH BARBED TIPS TO SPEAR INSECTS.



## JUST REMINISCING

Items Taken from the Files of The Chelsea Standard

### 4 Years Ago...

Thursday, Jan. 14, 1971—

Coming away from the Novice State Championship last Saturday with a 4-4 record that was good for a six-way tie for fourth place were Chelsea debaters Martin Straub, Mike Hergert, Dan Gaunt, and Janice Schramm.

Doug Hanson, 15-year-old son of Mr. and Mrs. Gus Hanson, 15901 Seymour Rd., Grass Lake, was the winner of the Mid-State Snowmobile Drag Racing Championship in Class CC, which was held last Sunday.

Mr. and Mrs. Frank Abdon, 447 Railroad St., observed their 69th wedding anniversary Friday, Jan. 8. The couple celebrated the occasion by receiving friends and relatives at their home throughout the quiet, but happy day.

At the December meeting of the Community Advisory Board of St. Joseph Mercy Hospital, Howard S. Holmes was elected vice-chairman of the group.

Thirty state officers and 11 guests attended the State Executive Board meeting of the Jaycee Auxiliary, which was held last Saturday at the First United Methodist church in Chelsea. Mrs. Art Steinaway, State Jaycee Auxiliary president, chaired the meeting.

### 14 Years Ago...

Thursday, Jan. 10, 1961—

The Rev. Paul M. Schnake, pastor of St. Paul's Evangelical and Reformed church, and the Rev. Armin Bizer, of St. James Evangelical and Reformed church, Saline township, leave by plane Tuesday for Miami, Fla. There they will board a chartered freight plane for Ecuador to deliver a plane load of livestock to various parts of that South American country for Church World Service.

Miss Grace Ward, who has been chief bookkeeper for the Chelsea Electric & Water Department for almost 27 years, has been retired under the village retirement system.

Carol Reddeman, daughter of Mr. and Mrs. Clarence Reddeman, has been chosen as the DAR Good Citizen of Chelsea High school by votes of students and teachers. Tonight she and her parents will attend a meeting at the City Club, Ann Arbor, which will honor all the DAR winners in the county.

Lynda M. Mayer, a senior at the University of Michigan's School of Nursing, and the Rev. Allan W. Reed, who is vicar of St. Barnabas church and a graduate student at the University, were among 244 students who became members of Phi Kappa Phi honorary society in ceremonies held at Rackham Amphitheater last Thursday.

Conservation officer Donley Boyer, whose home is at 406 North St., has been elected president of the Law Enforcement and Industrial Security Association of Washtenaw county.

### 24 Years Ago...

Thursday, Jan. 18, 1951—

Latest dealership to be admitted to Pontiac Motor division's "Hall of Fame" is Harper Sales and Service of Chelsea, which has been named a "Better Dealer" by Pontiac factory executives. Harper Sales and Service has represented Pontiac for a period of 24 years. The firm is headed by Walter Harper, founder and still owner and proprietor.

Ralph Guenther left Ann Arbor Tuesday morning for induction into military service. He was one of the group of about 85 young men who went to the Detroit induction center as Washtenaw county's quota of draftees for January.

Everett school on Manchester Rd., and Dresselhouse school on Pleasant Lake Rd. were presented with large American flags last Thursday afternoon by the local Woman's Relief Corps. Both schools presented a short program by the pupils in addition to the

presentation ceremony put on by WRC members Mrs. Helen Kilmer, Mrs. Nellie Whitmer, Mrs. Ernest Filtzner, Mrs. Howard Gilbert, and Mrs. W. G. Price.

Sgt. Louis Birch, in Tokyo on a five-day leave from the fighting in Korea, talked to his parents, Mr. and Mrs. William Birch, by trans-Pacific radio-telephone Monday night. Because of the difference in time, it was Sunday morning in Tokyo. Sgt. Birch said he had stayed up all night to get the call through. Mrs. Birch reported that the connections were excellent and his voice was clear over the telephone.

### 34 Years Ago...

Thursday, Jan. 18, 1941—

As the result of a deal, which is being consummated this week, Phyllis Wedemeyer is purchasing the Chelsea Hotel building and contents from Mrs. H. S. Holmes. Miss Wedemeyer has operated the hotel and bowling alleys for some time. She also plans to install four new bowling alleys in a basement addition to the building, which will be constructed on the north side of the present building with the roof slightly above ground level.

At the annual meeting of the stockholders of the Chelsea State Bank Tuesday afternoon, the following officers were chosen: Paul G. Schaible, president; John L. Fletcher, vice-president and cashier; Carl J. Mayer, assistant cashier; and Paul F. Niehaus, assistant cashier.

The home of Mr. and Mrs. Emmett H. Dancer on US-12, three and one-half miles east of Chelsea was destroyed by fire between 8 and 9 a.m. Monday, with nearly all of its contents. When discovered by Mrs. Dancer, smoke was coming from the basement. Chelsea Fire Department was unable to save the building.

## ★ MICHIGAN MIRROR ★

By Elmer E. White, Secretary, Michigan Press Association

Need a Doctor?

More family doctors should be available soon. This is thanks mostly to efforts at Michigan State University which has organized a family practice department to bring this important area of medicine into the specialty class; and to Wayne State, which is moving in the same direction with the promise of a well organized department. In addition, the osteopathic medical school at MSU is now graduating doctors, most of whom go into general practice.

Michigan has less than 2,000 general practitioners at present and needs between 1,200 to 2,000 more if a satisfactory level of primary care is to be available, according to a Joint Legislative Committee. The group, with Sen. Alvin J. DeGroot (R-Pigeon) chairman and Rep. Melvin DeStiger (R-Grand Haven) vice-chairman, held numerous meetings which included medical educators, students and doctors. It concluded that a number of things should be done in order to develop more family doctors.

One of these is that medical schools must give specialty status to family practice procedures. It is held that family doctors need specialized preparation just as do doctors who specialize in pediatrics or surgery.

The official committee report expressed itself as "pleased" with progress at MSU and Wayne, but "somewhat reluctantly" concluded "that a great deal of effort must be expended to convince the University of Michigan that a family practice specialty program would be desirable." U-M reacts by devising a program which provides similar training for the student in "community medicine."

Each person worried about a shortage of family doctors can help by expressing his concern to legislators. Unless there is a change in concept at U-M, Wayne and MSU must turn out most of the family doctors to fill the need, desperate in some parts of the

state, while U-M concentrates on specialists in other fields.

It is also certain that voter concern, related through legislators to medical educators, can help produce medical service geared to the kind of primary care some seriously need in so many places.

Another problem all doctors, specialists more than others perhaps, are so greatly worried about malpractice insurance that the Michigan State Medical Society says it is possible some areas of the state will be without medical service of any kind. If malpractice insurance is cancelled on the only anesthesiologist in an area, that will put an end to surgery there. Under present circumstances, doctors about to begin cannot get malpractice insurance in this state.

There are conferences between lawyers, doctors and others to correct this situation, but unless there is a change, Michigan Medical Society predicts that the number of practicing doctors of all kinds will drop dramatically in Michigan and that some hospitals will be forced to close.

This is another issue legislators are concerned with, and messages from constituents would let them know how many people are anxious to have the medical problems solved, or at least mitigated.

More to Go

Many Michigan youngsters remain unprotected from polio, measles and rubella—but there's been great progress made in recent months.

The chief of the Michigan public health department's immunization program, John A. Orris, reports a whopping increase of 133 percent in doses of oral polio vaccine dispensed in October 1974, compared to October 1972. That's 43,047 compared to 18,421.

Figures for measles and rubella vaccine don't quite measure up, but they're healthy enough.

There were 16,559 measles vaccine doses last October compared to 11,039 during October 1972; 15,800 rubella vaccine doses compared to 12,681 in October 1972. That's 50 percent and 25 percent increases respectively. (Figures for measles and rubella indicate vaccines given alone or in combination with another vaccine.)

October of last year had been designated Immunization Action Month and extensive efforts were made to reach parents of those youngsters who may not have had previous protection.

## ROCKCRETE PRODUCTS

TRANSIT - MIXED CONCRETE

WASHED SAND & STONE - ROAD GRAVEL

LIMESTONE

Rite-Way Mixers

475-2848

6991 CHELSEA-MANCHESTER RD., MANCHESTER

## WASHTENAW COMMUNITY COLLEGE

AND

## CHELSEA PUBLIC SCHOOLS

OFFER CLASSES AT

CHELSEA HIGH SCHOOL

WINTER SEMESTER 1975 - Classes Begin Week of Jan. 13, 1975

Registration 6:30 - 7 p.m. Preceding FIRST Meeting of Class

Registration Also Accepted at Huron River Campus, Ann Arbor

FOR FURTHER INFORMATION CALL 971-6300, EXT. 423 OR 453

COURSE NUMBER	COURSE NAME	CREDITS	SEC. NO.	DAYS	HOURS
ACC 091	Fund. of Accounting	3	55	TH.	7: - 10: p.m.
BIO 102	Human Biology	4	55	TU.-TH.	7: - 10: p.m.
BPR 100	Blprt Rdg/Const. Tr.	2	55	WED.	7: - 9: p.m.
EC 222	Economics	3	55	TU.	7: - 10: p.m.
ENG 122	English Comp.	3	55	WED.	7: - 10: p.m.
ENG 170	Intro. to Literature	3	55	TH.	7: - 10: p.m.
GB 122	Business Law	3	55	MON.	7: - 10: p.m.
HST 101	Western Civilization to 1600	3	55	MON.	7: - 10: p.m.
MTH 039	Basic Math	3	55	WED.	7: - 10: p.m.
MTH 090	Occupational Math	3	55	WED.	7: - 10: p.m.
MTH 097A	Intro. Algebra	3	55	TU.	7: - 10: p.m.
MTH 097B	Intro. Algebra	3	55	TU.	7: - 10: p.m.
MTH 169A	Intermediate Algebra	3	55	TU.	7: - 10: p.m.
MTH 169B	Intermediate Algebra	3	55	TU.	7: - 10: p.m.
MTH 177	Trigonometry	3	55	WED.	7: - 10: p.m.
MUS 090	*MOOG Synthesizer	1	55	TU.	7: - 10: p.m.
PSY 100	Intro. to Psychology	3	55	TU.	7: - 10: p.m.
PSY 200	Child Psychology	3	55	TH.	7: - 10: p.m.
PSY 207	Social Psychology	3	55	MON.	7: - 10: p.m.
SO 200	*Machine Shorthand	2	55	TU.-TH.	7: - 9: p.m.
SOC 100	Prin. of Sociology	3	55	TH.	7: - 10: p.m.

\*Seven Week Course

\*\*Eight Week Course

FEE: \$12.50 PER CREDIT HOUR

## ANNUAL MARCH OF DIMES RADIO AUCTION

Briarwood Mall Grand Court

SATURDAY, JAN. 25

10 a.m. to 9 p.m.

WNRS - 1290 AM, 102.9 FM

Established 1871 The Chelsea Standard Telephone 475-1371

Excellence Award By Michigan Press Association

1951-1952-1960-1964-1965-1966

Walter P. Leonard, Editor and Publisher

Published every Thursday morning at 800 North Main Street, Chelsea, Mich. 48118, and second class postage paid at Chelsea, Mich., under the Act of March 3, 1879.

Subscription Rates (Payable in Advance)  
In Michigan: One Year \$6.00, Six Months \$3.50, Single Copies \$ .20  
Outside Michigan: One Year \$8.50, Six Months \$4.50, Single Copies \$ .25

MEMBER NATIONAL NEWSPAPER PUBLISHERS ASSOCIATION

National Advertising Representative: MICHIGAN NEWSPAPERS, INC. 257 Michigan Ave. East Lansing, Mich. 48823

# investment breakthrough

# 7

3 3/4%  
PER ANNUM

all savings accounts insured to \$40,000

PASSBOOK CERTIFICATE WITH MONTHLY COMPOUNDING YIELDS AN EFFECTIVE ANNUAL RATE OF...

# 8

8.03%  
PER ANNUM

This is truly a fine savings/investment... an effective annual return on your savings dollars of 8.03%...insured to \$40,000. AND it is available to small as well as large investors... \$1000 minimum...term 72 months.

You can open the new 7 3/4% Passbook Certificate Accounts at any AAFS office in Washtenaw and Livingston Counties. Federal regulations require a substantial penalty for early withdrawals from certificate accounts.

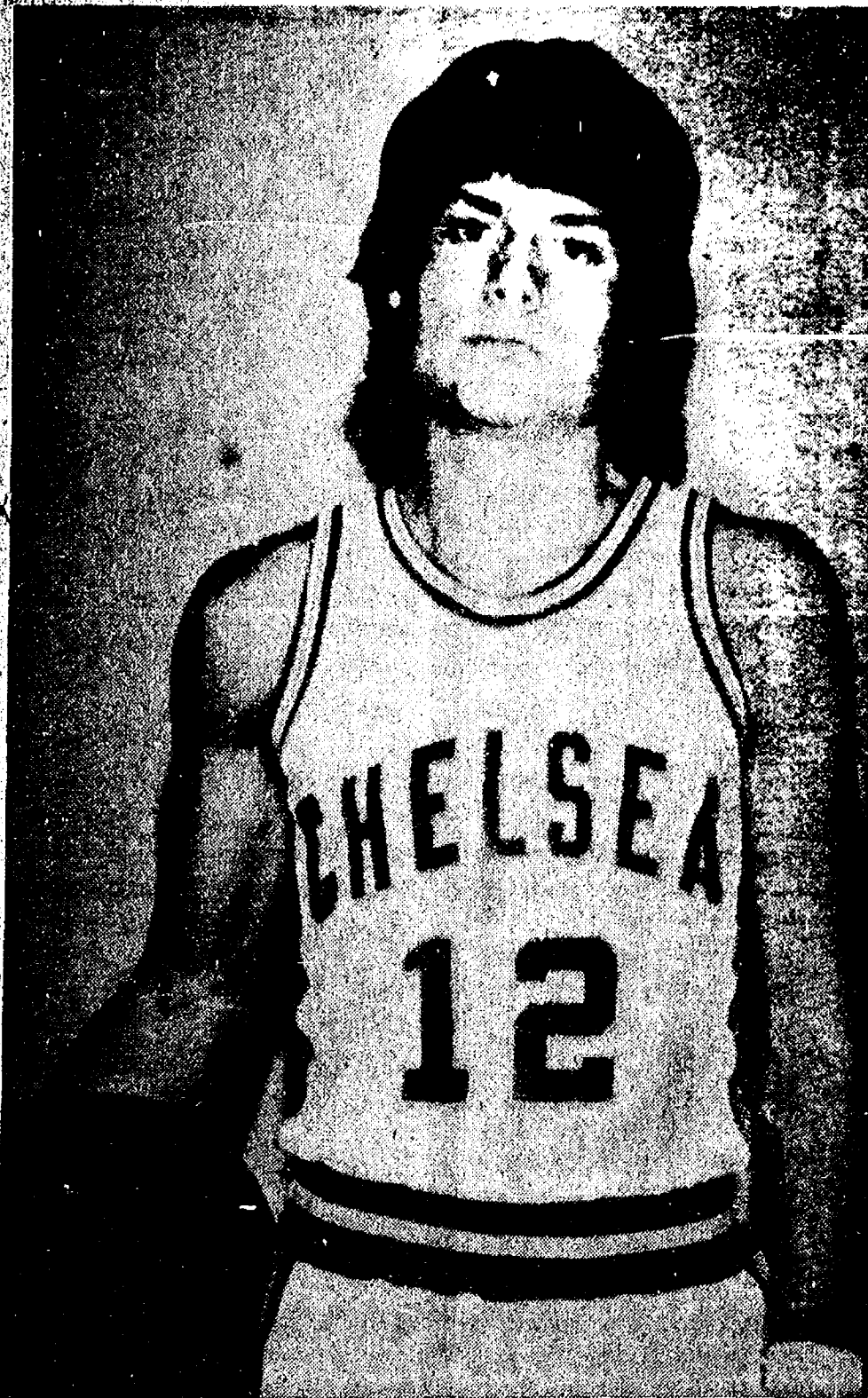
## AAFS

ANN ARBOR FEDERAL SAVINGS

9 OFFICES TO SERVE YOU IN ANN ARBOR, CHELSEA, DEXTER, YPSILANTI, MANCHESTER, BRIGHTON  
Member FSILC



## Cager of the Week



RANDY MUSBACH is a senior presently playing in his second year of varsity basketball for the Bulldogs. A basketball player since 7th grade, he now instructs a Recreation Council biddy basketball team for six- and seven-year-olds. He is a member of Chelsea High school's chapter of the National Honor Society and plans to attend college after graduation, probably Miami of Ohio, to study political science. He believes that Chelsea's defeat by Milan last Friday was "a tough loss, but I think we have the ability to come back from it." Coach Tom Balistriere describes Musbach as having done "an excellent job as a starter for last year, and I'm very pleased with his progress, hustle, and desire." The son of Mr. and Mrs. Arden Musbach, he has one sister, Jane.

Herbert J. McKune American Legion  
Post No. 31, Cavanaugh Lake

## ICE FISHING DERBY

SATURDAY and SUNDAY, FEB. 8-9  
From 7 a.m. to 4 p.m.

\$1.00 Registration

## Two Undefeated Teams Lead In Beach Intramural Leagues

A pair of undefeated teams currently perch atop both boys' and girls' intramural leagues at Beach Middle school after the teams' second day of play last Wednesday.

In girls' action, Welshans team downed Enderle, 12-3, while Arnett edged out Bassett, 10-6, to remain undefeated.

Burns downed Miles team, 11-6, to even up their record at 1-1, good enough for a tie for second place with Enderle and Satterthwaite teams.

Satterthwaite took care of winless Lamb team, 12-3, to raise their record to 1-1. Lamb team shares its 0-2 cellar-dwelling status with Bassett.

High scorers for the week were

Kathy Voita with nine points, and Nanette Push and Veronica Satterthwaite with six each.

In boys' action, Burg and Overpeck teams retained their undefeated league-leading standing by downing Leach and Bareis teams, respectively, by identical 19-9 scores. The defeats left Bareis in second place with a 1-1 record, while Leach is languishing in the cellar with Sabo at 0-2.

Young team upped its record to 1-1 by trouncing the Sabo squad, 32-16.

High scorers for the week were Chuck Young with 21 points; Brad Knickerbocker with 10; Dave Boham with nine; and Bob McAllister and Paul Overpeck with eight each.

### BEACH GIRLS LEAGUE

Standings as of Jan. 8

	W	L
Welshans	2	0
Arnett	2	0
Burns	1	1
Mills	1	1
Enderle	1	1
Satterthwaite	1	1
Bassett	0	2
Lamb	0	2

### BEACH BOYS LEAGUE

Standings as of Jan. 8

	W	L
Burg	2	0
Overpeck	2	0
Young	1	1
Bareis	1	1
Leach	0	2
Sabo	0	2

### Tape Deck Stolen

#### From Unlocked Van

A Craig auto tape deck with built-in FM radio was stolen from a Dodge van parked in the Wolverine Lounge parking lot Saturday afternoon.

Raymond Franklin, 18280 Cavanaugh Lake Rd., told officers that the tape deck had been wired, but not permanently mounted, in his unlocked 1974 Dodge van. He believed it was stolen between 2 and 5 p.m. He said that the tape deck was purchased from Heydlauff's for \$125.

Police have no suspects in the case and are continuing their investigation.

The Mothers March on birth defects for the March of Dimes takes place throughout the country each January as a drive against the nation's major child health problem.

The Chelsea Standard, Thursday, January 16, 1975 3

Babies born to poorly nourished women frequently are born too soon or underweight, the March of Dimes reports. When this happens, the infant may suffer developmental damage.

Actress Jane Wyatt is both a trustee of the March of Dimes, and National Chairman of Volunteer Services for the voluntary health organization's campaign to prevent birth defects.

## Complete Construction Service

Factories, warehouses, retail stores, offices, recreational and educational buildings. Any size or type.



The building systems that put you in business quickly and very economically.

BUTCHER & WILLITS, INC.  
2 1/2 Jefferson Ct.  
Ann Arbor, Mich. 48103  
(313) 665-3675



AMERICAN BUILDINGS

## JV Cagers Lose Battle to Milan, 63-51

Hurt by numerous errors throughout the game, Chelsea's Junior Bulldog cagers fell to Milan Friday night, 63-51.

In a typically hard-fought game, Milan hit for 30 out of 48 shots from the floor for a fine 63 percent, while local JV's managed a respectable 43 percent from the floor but a poor 29 percent from the foul line.

Leading scorer for Chelsea was Randy Sweeney, who was good for 19 points. Don Morrison added another 15 and Tony Robards, seven.

Sweeney also paced rebounders for Coach Paul Terpstra's squad, pulling in 13. Tony Robards pulled down 10.

The defeat left the Junior Bulldogs' season record at 4-5. Friday they will entertain Dexter on the home court.

## Varsity Cagers Trowned By Milan, 84-41

(Continued from page one)

Sweeney, who pulled down eight. Ron Kiel managed five; Gary Wonders and Dave Alber, three; Randy Davis, Randy Guenther, Randy Lyerla, and Jack Hackworth, two; and Dave Watson, Randy Musbach, and Rick Robbins, one.

"Everything depends on how we play from now on, Balistriere repeated. "Right now, we're looking ahead to Dexter."

Bulldogs will host Dexter at the local gym Friday night.

STATISTICS  
Milan Game Jan. 10

	pts	reb	ast	stl	blk	fg	ft
Dave Alber	3	0	3	7			
Randy Davis	2	2	0	2			
Randy Guenther	2	1	0	4			
Ron Kiel	5	0	0	0			
Bill Rademacher	0	0	0	0			
Steve Lyerla	2	0	0	0			
Dave Watson	1	0	0	3			
Jack Hackworth	2	0	1	6			
Tom Hafer	0	0	0	0			
Howard Salyer	0	0	0	0			
Randy Musbach	1	0	1	0			
Rick Sweeney	8	1	0	8			
Rick Robbins	1	0	0	2			
Gary Wonders	3	2	1	9			

Total shots attempted from the floor, 45; total shots made, 15; percentage, 33.

Total shots attempted from the foul line, 14; total shots made, 11; percentage, 78.

SEC SCHEDULE  
Games Jan. 17

Brighton at South Lyon.  
Dexter at Chelsea.  
Lincoln at Saline.  
Milan at Novi.

The Veterans Administration cautions veterans planning to travel or establish residence overseas to check first with the agency, because certain benefits are prohibited by law in foreign countries.

## Gary Radke Leads Cribbage Tourney Field

Gary Radke, sporting an 8-2 record and a total of 213 points, is currently leading the pack of 28 entrants after Monday's opening night of play in Chelsea Jaycees' cribbage tournament. Play will continue next Monday, Jan. 20.

Standings after the first round are as follows:

	W	L	Pts.
Gary Radke	8	2	213
Richard Lehman	8	2	201
Dave Evison	7	3	335
Evelyn Kaiser	7	3	332
Betty Kay Mull	7	3	327
Tom Grimm	7	3	316
Winston Boyer	6	4	422
Art Jarve	6	4	410
Karen Steinaway	6	4	408
Maxine Quillin	6	4	407
Jerry Keene	5	5	569
Jim Hoffmeyer	5	5	554
Ann Steinaway	5	5	532
Sue Walton	5	5	529
Tom Penhallegon	5	5	523
Skip Schlup	5	5	523
Maureen Laponovski	5	5	517
Maureen Barry	5	5	505
Sally Schlup	5	5	494
Ginny Wheaton	4	6	624
Nancy Picklik	4	6	620
Fremont Boyer	4	6	620
Richard Glasson	3	7	763
Sam Stucky	3	7	753
Alberta Colby	3	7	726
Richard Hines	3	7	775
Leslie Williams	2	8	793
Tammy Hines	1	9	955

## Frosh Cagers Show How By Downing Milan

Freshman Bulldog cagers raised their record to 3-2 Thursday night with a solid defeat of Milan, 55-33.

Coach Jim Tallman called the contest "a good game all around, particularly holding Milan to 33 points."

Leading scorer for the Little Bulldogs was Randy Harris, who recorded 15 points. Harris, who also pulled down eight rebounds, was voted the team's most valuable player in the game.

Most of the squad got in on the evening's scoring. Hitting for nine points each were John Daniels and Gerry Benjamin, aided by Chris Smyth, eight points; Rod Sweeney and Kurt Owings, four; Mark Feeney and Dave Schrottenboer, two; and Steve Pennington and Matt McClear, one.

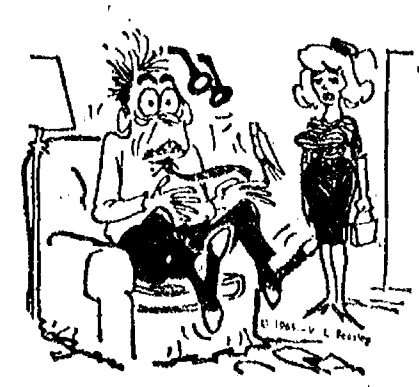
Rebounding efforts included Gerry Benjamin with 13; Dave Schrottenboer with 12; and Chris Smyth, Kurt Owings, and Randy Harris with eight.

Thursday the freshmen will host Saline in a return engagement. In the teams' last meeting, Saline defeated Chelsea in a close contest.

Parents of small children should be careful that severe head colds or earaches that can result in a hearing loss are properly treated. This is particularly true during the winter months, warn hearing specialists.

## Mobil-Toons

By GLENN



Good service is no accident!

GLENN'S  
MOBIL SERVICE  
1622 M-52 & I-94  
CHELSEA, MICHIGAN  
Phone 475-1767  
GLENN HEIM  
PROP.

# Jiffy market

Big Enough To

Serve You . . . Small Enough To Know You!

## Full Line Supermarket

BEER - WINE - LIQUOR  
AUTHORIZED FOOD STAMP STORE  
LOTTERY TICKETS  
MARATHON GAS PUMPS  
2-CYCO GAS PUMPS

Corner Sibley  
and Werkner Rds.  
PHONE 475-1701

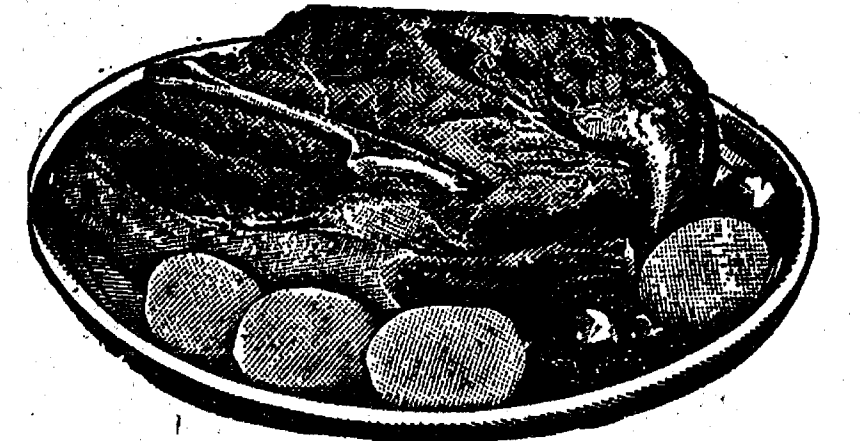
Sale Prices Effective  
Thurs., Jan. 16 thru Sun., Jan. 19

OPEN  
SUN. THRU FRI.  
8 a.m. to 8 p.m.  
SATURDAY  
8 a.m. to 10 p.m.

# BEEF CHUCK ROAST

U.S.D.A. GRADE CHOICE

BLADE CUT . . . . . 79¢ lb.  
CENTER CUT . . . . . 89¢ lb.  
ARM CUT . . . . . \$1.19 lb.  
ENGLISH CUT . . . . . \$1.19 lb.



Tender Beef with Flavor!  
U.S.D.A. Choice

SATISFACTION GUARANTEED	MEADOWDALE HICKORY SMOKED	U. S. CHOICE	U. S. CHOICE	BEEF By the side
HAMBURG	SLICED BACON	RIB STEAK	GROUND CHUCK	Cut - Wrap - Frozen Complete processing Your Beef or Ours
79¢ lb.	\$1.19 lb.	\$1.39 lb.	\$1.29 lb.	

WAY BAKING CO., JACKSON

KLEEN-MAID BREAD . . . . . Large 1-Lb., 4-Oz. Loaves 39¢

FARM MAID — THE MILK THAT LOWERED CHELSEA'S MILK BILLS!  
HOMOGENIZED MILK . . . . . Crtn. or Plastic Gal. \$1.29

FARM MAID  
ORANGE JUICE . . . . . 1/2 gal. Plastic 59¢

CAMELOT BUTTERMILK  
PANCAKE MIX . . . . . 2-Lb. Box 53¢

CAMELOT GRADE A  
FRESH EGGS . . . . . Med. Size Dozen 59¢

CALIFORNIA LARGE 24's  
HEAD LETTUCE . . . . . Each 29¢

BORDEN'S GLACIER CLUB  
ICE CREAM . . . . . 1/2 gal. 79¢

PINT BOTTLES  
R.C. COLA . . . . . 16-Oz. No-Return Bottles 6 pac \$1.15

## MARATHON GAS

REGULAR

PREMIUM

48.9

56.9

LEAD - FREE

53.9

Prices include all taxes

Cold Weather Gas You Can DEPEND ON

What's the Reason  
For Low Price  
Regular Gas?  
Times Are Tough  
You Need A Break.  
We Need the Sales!

GAS PUMPS & STORE OPEN 8 a.m. to 8 p.m. Sun. thru Fri.  
8 a.m. to 10 p.m. SATURDAYS

## Winter Hardware Specials

## INSULATED SHOE SKATES

Hockey, Men's and Women's Figure Skates  
Sizes in stock only

1/3 Off

TRUE TEMPER X18A  
ALUMINUM SNOW SHOVEL . . . \$3.70

MONKEY-FACE  
COTTON WORK GLOVES . . . . . pr. 99¢

MEN'S JERSEY GLOVES . . . . . pr. 85¢

## CHELSEA HARDWARE

110 S. Main St.

Ph. 475-1121



## Fashion Show Slated Feb. 1 To Benefit March of Dimes

Dexter area men and women are invited to the annual March of Dimes Luncheon and Fashion Show on Saturday, Feb. 1. This year's elegant event is set for Weber's Inn on Jackson Rd., with fashions by Jacobson's of Ann Arbor.

Cocktail hour is 12 noon with luncheon and fashion show beginning at 1 p.m. All proceeds go to help in the prevention of birth defects.

Theme of the show is Ports of Call. Fashions from around the world will be modeled by local men and women with Alan Hawes of Jacobson's as fashion co-ordinator. Commentator is Mrs. Ted Heusel.

For reservations call Mrs. William Colburn, 971-2194. Donation is \$12 per person.

Special guests of the afternoon will be Dennis Franklin, University of Michigan quarterback, and David Brown, All-American defensive safety from U. of M. Both will model men's fashions. Mrs. Bo Schenpecker will also model.

Chairman of the event is Mrs. John Bowie assisted by Mrs. Thomas H. Ruby, co-chairman. Other committee chairmen are Mrs. William Colburn, reservations; Mrs. Jack J. Garis, publicity; Mrs. Ted Barnes and Mrs. Max Supica, decorations; Mrs. John Barry, models co-ordinator; Mrs. Ray Rossi and Mrs. John

Berkery, printing; Mrs. Glen Schliemann and Mrs. John Fredrick, favors; Mrs. David Critchett, invitations; Mrs. William Ker-shaw, public relations; Mrs. Richard Garner, fashion show secretary.

## Family Day Scheduled at Sharon Church

North Sharon Bible church is prepared for one of their biggest events of the year. On Sunday, Jan. 19, the day will be devoted entirely to honoring the family. Morning service is at 11 a.m. and Sunday school at 10 a.m.

The Rev. Bill Enns, pastor of North Sharon Bible church, which is located at 1799 Washburne Rd., Grass Lake, has expressed concern for the lack of emphasis today on the family and for this reason instituted Family Day.

On that day, the largest family unit present will receive a copy of Dr. John R. Rice's book "The Home, Courtship, Marriage and Children" and, everyone present, will receive the booklet "God's Authority in the Home, Government and the Bible," by Dr. John R. Rice.

## + Services in Our Churches +

**CONGREGATIONAL CHURCH**  
(United Church of Christ)  
The Rev. Carl Schwarm, Pastor  
Thursday, Jan. 16—  
7:30 p.m.—Choir.  
Sunday, Jan. 19—  
9:00 a.m.—Confirmation.  
10:30 a.m.—Sunday school and worship service. Installation of church officers.  
Monday, Jan. 20—  
7:00 p.m.—Church council.  
Thursday, Jan. 23—  
7:30 p.m.—Choir.

**ST. MARY CATHOLIC CHURCH**  
The Rev. Fr. David Philip Dupuis, Pastor  
Mass Schedule  
Every Sunday—  
4:00-5:00 p.m.—Confessions.  
7:00 p.m.—Mass.  
Immediately after 7 p.m. Mass—Confession.  
Every Sunday—  
Winter schedule  
8:00, 10:00, 12:00 noon.—Mass.  
Summer schedule  
7:00, 9:00, 11:00 a.m.—Mass.

**WATERLOO VILLAGE UNITED METHODIST CHURCH**  
8118 Washington St.  
The Rev. Altha Barnes, Pastor  
Every Sunday—  
10:00 a.m.—Sunday school.  
11:15 a.m.—Worship service.

**FIRST UNITED METHODIST**  
Parks and Territorial Rds.  
The Rev. Altha Barnes, Pastor  
Every Sunday—  
9:15 a.m.—Morning worship.  
10:15 a.m.—Sunday school.

**IMMANUEL BIBLE CHURCH**  
145 E. Summit St.  
The Rev. LeRoy Johnson, Pastor  
Every Sunday—  
9:45 a.m.—Sunday school, nursery provided.  
11:00 a.m.—Morning worship, nursery provided.  
7:30 p.m.—Family hour, prayer meeting and Bible study.  
First Sunday of the month—  
7:00 p.m.—Communion service.  
10:00 a.m.—Sunday school.

**CHURCH OF JESUS CHRIST OF LATTER-DAY SAINTS**  
Meetings at  
St. Barnabas Episcopal Church  
20500 Old US-12  
Every Sunday—  
11:00 a.m.—Priesthood meeting.  
12:30 p.m.—Sunday school.  
5:30 p.m.—Sacrament meeting.

**BETHEL EVANGELICAL AND REFORMED CHURCH**  
(United Church of Christ)  
Freedom Township  
The Rev. Roman A. Reineck, Pastor  
Every Sunday—  
10:00 a.m.—Worship service.

**FIRST UNITED PRESBYTERIAN CHURCH**  
Unadilla  
The Rev. T. H. Liang, Pastor  
Every Sunday—  
9:45 a.m.—Sunday school.  
11:00 a.m.—Worship service.

**ST. JOHN'S (UNITED CHURCH OF CHRIST)**  
Rogers Corners  
The Rev. Carl Asher, Pastor  
Every Sunday—  
9:30 a.m.—Sunday school.  
10:30 a.m.—Worship service.

**BAHA'I FIRESIDE**  
Every Thursday—  
8:00 p.m.—At the home of Toby Peterson, 705 S. Main St. Anyone wishing to learn about the Baha'i faith is welcome.

**CHURCH OF CHRIST**  
13661 Old US-12, East  
David A. Rushlow  
Every Sunday—  
10:00 a.m.—Church school.  
11:00 a.m.—Worship service.  
Nursery will be available.  
6:00 p.m.—Worship service.  
Every Wednesday—  
7:30 p.m.—Bible study.

**METHODIST HOME CHAPEL**  
The Rev. R. L. Clemans, Pastor  
Every Sunday—  
8:45 a.m.—Worship service.

**ST. PAUL UNITED CHURCH OF CHRIST**  
The Rev. John Rinehart, Interim Pastor  
Friday, Jan. 17—  
Junior Youth Fellowship retreat begins—three days at Pilgrim Haven.  
Sunday, Jan. 19—  
9:00 a.m.—Church school.  
10:30 a.m.—Church school.  
10:30 a.m.—Worship service.  
7:00-9:00 p.m.—Family skating party.  
Monday, Jan. 20—  
7:30 p.m.—Church school teachers.

**ST. THOMAS EVANGELICAL LUTHERAN**  
Ellsworth and Haab Rds.  
The Rev. Jerome Dykstra, Pastor  
Saturday, Jan. 18—  
10:00 a.m.—Confirmation class.  
Sunday, Jan. 19—  
9:30 a.m.—Sunday school and Bible class.  
10:45 a.m.—Worship with Holy Communion.  
Tuesday, Jan. 21—  
10:00 p.m.—Choir rehearsal.  
Wednesday, Jan. 22—  
10:00 a.m.—Bible study.

**ST. BARNABAS EPISCOPAL CHURCH**  
20550 Old US-12  
The Rev. Jerrold Beaumont, B.S.P., vicar  
Rectory 475-2003  
Church 475-8818  
Every Sunday—  
9:15 a.m.—Holy Communion, first, third, and fifth Sundays.  
9:15 a.m.—Morning Prayer, second and fourth Sundays.  
First Wednesday of each month—  
Bishops Committee.

**ST. JOHN'S EVANGELICAL AND REFORMED CHURCH**  
(United Church of Christ)  
Francisco  
The Rev. Virgil King, Pastor.  
Every Sunday—  
9:30 a.m.—Sunday school and catechism class.  
10:30 a.m.—Worship service.

**NORTH SHARON BIBLE CHURCH**  
Sylvan and Washburne Rds.  
The Rev. William Enns, Pastor  
Every Sunday—  
10:00 a.m.—Sunday school.  
(Nursery will be available.) Junior church classes.  
11:00 a.m.—Worship service.  
6:00 p.m.—Senior High Youth meeting. Youth Choir.  
7:00 p.m.—Evening worship service. (Nursery available.)  
All services interpreted for the deaf.  
Every Wednesday—  
7:00 p.m.—Bible study and prayer meeting. (Nursery available.)  
Bus transportation available: 428-7222.

**CHURCH OF JESUS CHRIST OF LATTER-DAY SAINTS**  
Meetings at  
St. Barnabas Episcopal Church  
20500 Old US-12  
Every Sunday—  
11:00 a.m.—Priesthood meeting.  
12:30 p.m.—Sunday school.  
5:30 p.m.—Sacrament meeting.

**BETHEL EVANGELICAL AND REFORMED CHURCH**  
(United Church of Christ)  
Freedom Township  
The Rev. Roman A. Reineck, Pastor  
Every Sunday—  
10:00 a.m.—Worship service.

**FIRST UNITED PRESBYTERIAN CHURCH**  
Unadilla  
The Rev. T. H. Liang, Pastor  
Every Sunday—  
9:45 a.m.—Sunday school.  
11:00 a.m.—Worship service.

**ST. JOHN'S (UNITED CHURCH OF CHRIST)**  
Rogers Corners  
The Rev. Carl Asher, Pastor  
Every Sunday—  
9:30 a.m.—Sunday school.  
10:30 a.m.—Worship service.

**BAHA'I FIRESIDE**  
Every Thursday—  
8:00 p.m.—At the home of Toby Peterson, 705 S. Main St. Anyone wishing to learn about the Baha'i faith is welcome.

**CHURCH OF CHRIST**  
13661 Old US-12, East  
David A. Rushlow  
Every Sunday—  
10:00 a.m.—Church school.  
11:00 a.m.—Worship service.  
Nursery will be available.  
6:00 p.m.—Worship service.  
Every Wednesday—  
7:30 p.m.—Bible study.

**METHODIST HOME CHAPEL**  
The Rev. R. L. Clemans, Pastor  
Every Sunday—  
8:45 a.m.—Worship service.

**ST. PAUL UNITED CHURCH OF CHRIST**  
The Rev. John Rinehart, Interim Pastor  
Friday, Jan. 17—  
Junior Youth Fellowship retreat begins—three days at Pilgrim Haven.  
Sunday, Jan. 19—  
9:00 a.m.—Church school.  
10:30 a.m.—Church school.  
10:30 a.m.—Worship service.  
7:00-9:00 p.m.—Family skating party.  
Monday, Jan. 20—  
7:30 p.m.—Church school teachers.

**ST. THOMAS EVANGELICAL LUTHERAN**  
Ellsworth and Haab Rds.  
The Rev. Jerome Dykstra, Pastor  
Saturday, Jan. 18—  
10:00 a.m.—Confirmation class.  
Sunday, Jan. 19—  
9:30 a.m.—Sunday school and Bible class.  
10:45 a.m.—Worship with Holy Communion.  
Tuesday, Jan. 21—  
10:00 p.m.—Choir rehearsal.  
Wednesday, Jan. 22—  
10:00 a.m.—Bible study.

**ST. BARNABAS EPISCOPAL CHURCH**  
20550 Old US-12  
The Rev. Jerrold Beaumont, B.S.P., vicar  
Rectory 475-2003  
Church 475-8818  
Every Sunday—  
9:15 a.m.—Holy Communion, first, third, and fifth Sundays.  
9:15 a.m.—Morning Prayer, second and fourth Sundays.  
First Wednesday of each month—  
Bishops Committee.

**ST. JOHN'S EVANGELICAL AND REFORMED CHURCH**  
(United Church of Christ)  
Francisco  
The Rev. Virgil King, Pastor.  
Every Sunday—  
9:30 a.m.—Sunday school and catechism class.  
10:30 a.m.—Worship service.

**NORTH SHARON BIBLE CHURCH**  
Sylvan and Washburne Rds.  
The Rev. William Enns, Pastor  
Every Sunday—  
10:00 a.m.—Sunday school.  
(Nursery will be available.) Junior church classes.  
11:00 a.m.—Worship service.  
6:00 p.m.—Senior High Youth meeting. Youth Choir.  
7:00 p.m.—Evening worship service. (Nursery available.)  
All services interpreted for the deaf.  
Every Wednesday—  
7:00 p.m.—Bible study and prayer meeting. (Nursery available.)  
Bus transportation available: 428-7222.

**FIRST UNITED METHODIST CHURCH**  
The Rev. Clive Dickens, Pastor  
Thursday, Jan. 16—  
9:00 a.m.—Elizabeth Circle, home of Mrs. Lorie Radey.  
Sunday, Jan. 19—  
10:00 a.m.—Worship service.  
10:20 a.m.—Church school.  
11:00 a.m.—Coffee and punch hour.  
11:15 a.m.—Junior-Senior high and adult church school classes.  
Wednesday, Jan. 22—  
3:45 p.m.—Kinder Choir.  
4:15 p.m.—Glory Choir.  
4:45 p.m.—Praise Choir.  
8:00 p.m.—Senior Choir.

**ZION LUTHERAN CHURCH**  
Corner of Fletcher, Waters Rds.  
The Rev. John R. Morris, Pastor  
Saturday, Jan. 18—  
9:00 a.m.—Eligible grade youth instruction.  
10:30 a.m.—Junior Choir.  
Sunday, Jan. 19—  
9:00 a.m.—Sunday school.  
10:15 a.m.—Worship service.  
7:00 p.m.—Adult Fellowship.  
7:00 p.m.—Luther League.  
Monday, Jan. 20—  
8:00 p.m.—Senior Choir.  
Tuesday, Jan. 21—  
10:00 a.m.—Activity and sewing.  
8:00 p.m.—Study Fellowship.  
Wednesday, Jan. 22—  
4:00 p.m.—Ninth grade youth instruction.

**GREGORY BAPTIST CHURCH**  
The Rev. Paul White, Pastor  
Every Sunday—  
10:30 a.m.—Worship.  
11:00 a.m.—Sunday school.  
7:00 p.m.—Evening worship service.  
7:30 p.m.—Thursday mid-week service.

**ST. JACOB-EVANGELICAL LUTHERAN CHURCH**  
12501 Rietmiller Rd., Grass Lake  
The Rev. Andrew Bloom, Pastor  
Every Sunday—  
9:00 a.m.—Worship service.  
10:15 a.m.—Divine services.

**FIRST ASSEMBLY OF GOD**  
The Rev. Thode B. Thodeson, Pastor  
Every Sunday—  
9:45 a.m.—Sunday school.  
11:00 a.m.—Worship service.  
7:00 p.m.—Midweek services.  
6:00 p.m.—Youth service.  
7:00 p.m.—Evangelistic service.

**OUR SAVIOR LUTHERAN CHURCH**  
1515 S. Main, Chelsea  
The Rev. William H. Keller, Pastor  
Every Sunday—  
9:00 a.m.—Sunday school and Bible class.  
10:30 a.m.—Divine worship.

**CHELSEA MEDICAL CENTER**  
Every Other Wednesday—  
1:30 p.m.—Worship service.

## Tourist Council Offers Toll-Free Information Calls

On Jan. 6, the Michigan Tourist Council launched a 10-week pilot project designed to provide additional service to the traveling public, both resident and non-resident, it was announced today by Jack S. Wilson, Council director.

The Council will man its toll-free telephone lines from 5 to 7 p.m., Monday through Friday. This will enable non-residents in different time zones, such as Chicago and Milwaukee, to obtain Michigan information during their normal work hours. It also will enable Michigan residents to reach the Council after regular office hours.

The Hot Line Program provides callers with up-to-date information on fuel availability, weather conditions, ski and snowmobile conditions, fishing information and other pertinent travel subjects.

The Lansing toll-free number, accessible from any point in Michigan is 1-800-292-2520.

From Wisconsin, Iowa, Illinois, Indiana, Kentucky, Ohio, West Virginia and Pennsylvania, call toll-free 1-800-248-9610. Western New York residents should call Area Code 716 to obtain this service.

Telephone Your Club News To 475-1371.

## KEN YOUNG CONSTRUCTION

PHONE 426-3342 or 826-3887 (after 6 p.m.)

Home Builder - Remodeling - Carpenter  
Contractor - Brick Work - Fireplaces  
Aluminum Siding - Block & Brick Work  
Painting - Decorating - Trucking & Excavating

FOR SALE—3 scenic 10-acre parcels. Two with lake frontage on private lake.

FREE ESTIMATES WITH GUARANTEE ON ALL OUR WORK.

PHONE KEN YOUNG after 6 p.m.  
668-7420 or 826-3887

## BOWLING NEWS

### Senior House League

Standings as of Jan. 13

	W	L
S. J. Custom Leather	42	41
Frank Groh's Chevrolet	41	42
Washtenaw Crop Service	37	47
Chelsea Grinding	74 1/2	55 1/2
Seitz's Tavern	73	60
Dexter Automatics	73	60
Sylvan Center	70	63
Bauer Builders	69	64
Chelsea Lumber	69	64
Sarn's, Inc.	64	62
Mark IV Lounge	62	71
Gambles	62	71
Schneider's Grocery	59 1/2	73 1/2
Foor's Mobil	58 1/2	74 1/2
Wal's Barber Shop	56	77
Lloyd Bridges Chevrolet	55 1/2	77 1/2
Village Motor Sales	51	82
Ben's Arco	44	82
525 and over series: W. Moss, 531; L. Sanderson, 581; D. Cumper, 531; C. Fore, 579; G. Packard, 577; J. Harok, 545; J. Collins, 548; M. Poertner, 532; N. Fahrner, 583; R. Bauer, 576; G. Burnett, 528; D. Welshans, 544; J. Toma, 561; J. Grannis, 565; K. Vasas, 534; E. Vasas, 533.		

### Chelsea Industrial Suburban

Standings as of Jan. 9

	W	L
Double A No. 99	46	26
Bob's Artistic	44	28
Double A No. 2	43	29
The Other Team	41	31
Thompson's Lounge	38 1/2	33 1/2
Harvey's Tavern	37 1/2	34 1/2
Ann Arbor Hyd. Service	35	37
Mark IV Lounge No. 1	30	42
Mark IV Lounge No. 2	25	47
Dana's PTOs	20	52
High single game: R. Hyatt, 215; J. Kruse, 213; J. Graham, 212.		
High single series: D. Cumper, 580; J. Graham, 563; R. Hyatt, 538.		
High team game: Double A No. 99, 890; Bob's Artistic, 878; Harvey's Tavern, 841.		
High team series: Bob's Artistic, 2,501; Thompson's Lounge, 2,413; Double A No. 99, 2,413.		

### Bulldog Mixed League

Standings as of Jan. 9

	W	L
Brown Drugs	43 1/2	24 1/2
Spadafore's Stores	42 1/2	25 1/2
Doug's Painting	40	28
Mac's Auto Sales	38 1/2	29 1/2
Dave Rowe Agency	37 1/2	30 1/2
3-D Sales	37	31
A & W	36	32
Leftover	34	34
Team No. 14	34	34
Good Luck	32	36
Stivers Bar	30	38
Marmadukes	26	42
Team No. 6	25	43
Slocum Contr.	20	48
Men, high games and series: A. Hawley, 222, 586; B. Smith, 208, 507; D. Kyle, 203, 518; R. Nix, 203, 507; B. Kaiser, 187; B. Rowton, 185; J. Callison, 183.		
Women, high games and series: P. Rowton, 187; D. Hawley, 167, 180, 485; D. Anderson, 178; K. Zsahunke, 175; L. Kyle, 165.		

There's little use in trying to conceal your age. Your old friends know it and your new friends probably don't give a hoot about it.

## Expect the unexpected.

We're selling the best food storage program available. That kind of foresight insures the possibility of survival in an emergency. Put some thought in food. Ask for our FREE information packet on freeze dried and dehydrated food for storage.

Liberty Foods  
549 Howard, Chelsea  
475-7621

### Tri-City Mixed League

Standings as of Jan. 10

	W	L
Craft Appliance Co.	41	51
Jiffy Mixes	39	53
Kerry & Doug's Quality	37	55
Real Estate One	37	55
Porridge Hardware	37	55
Stivers	37	55
Mel's Roofing	37	55
Chelsea Cleaners	37	55
E. P. Smith Paint Co.	37	55
McEwan & Robinson	37	55
3-D Sales & Service	37	55
Hoover's Hustlers	37	55
Sprague Bulk & Olds	37	55
Chelsea Glass Works	37	55
R. L. Bauer Builders	37	55
4-B's	37	55
Euler & Swersky	37	55
Take Seven	37	55
500 series, men: J. Baker, 529; P. Fletcher, 508; A. Fouty, 521; B. Maier, 540; A. Sannes, 536; H. Swersky, 534; R. V. Worden, 508.		
200 games, men: J. Baker, 211, 227; A. Fouty, 205; H. Swersky, 209.		
450 series, women: G. Detting, 513; K. Lentz, 474; N. Miller, 460; D. Swersky, 456; M. Westcott, 453.		
150 games, women: V. Allen, 164; M. Ashmore, 152; J. Buckingham, 172; G. Detting, 178, 195; K. Fletcher, 151; D. Fouty, 154; D. Fouty, 179; A. Hocking, 170; J. Kaiser, 163, 155; K. Lentz, 167, 162; N. Miller, 169; G. Ritchie, 163; M. Stafford, 161; D. Swersky, 174, 155; M. Westcott, 151, 160.		

### Charlie Brown & Snoopy's Friends

Standings as of Jan. 11

	W	L
Bulldogs	29	9
Streaking Strikers	26	12
Super Stars	24 1/2	13 1/2
Pin Fighters	21	17
Thompson's Submarines	19	19
Super Strikers	19	19
Streakers	17	21
Bobbing Pins	12 1/2	25 1/2
Pin Pushers	12	26
Chelsea Killers	10	28
Girls, games 100 and over: M. Alexander, 137, 102; M. Northrop, 126, 126; N. Push, 122, 113; M. Petsch, 115; D. Thompson, 115; L. Smith, 107; C. Fahrner, 105; C. Feeney, 103; T. Alexander, 102.		
Boys, games 140 and over: D. McGill, 173; B. Freeman, 160; P. Hoffman, 155; C. Tobin, 146; D. Bowen, 146; S. Wilson, 145; S. Rademacher, 144; R. McAllister, 142; R. Schulze, 141.		

When noise in any location makes normal conversation difficult at a distance of three feet, the sound level may be hazardous to human hearing mechanisms, according to hearing specialists.

## What's Cooking In Michigan

By Larrestine Trimman  
Michigan Dept. of Agriculture  
Marketing Information Specialist

Which came first, the chicken or the egg? Marketing officials of the Michigan Department of Agriculture say this is not the only question puzzling Michigan consumers when it comes to eggs. Many are also confused by the federal grades shown on egg cartons.

The two consumer grades you see most often in food stores are U. S. Grade AA and U. S. Grade A. It is the question of which is the higher grade that presents a problem to consumers buying eggs. Knowing the difference is essential to understanding pricing mechanisms for eggs in the marketplace, according to MDA Marketing officials.

U. S. Grade AA, or Fresh Fancy, is the highest quality. Second in quality is U. S. Grade A, the one found in largest quantity in food stores today.

Characteristics of the two grades are similar. Both have round, firm yolk and high, thick white when broken out. They're ideal for all purposes but especially for frying, poaching or any dish where appearance is important.

U. S. Grade B eggs are found infrequently in some area food stores. They have less thick white and the yolk may be somewhat flattened but they're good for general cooking and baking.

Grade standards are applied by federal-state egg graders in accordance with egg laws. They relate to the quality of the eggs only and have nothing to do with egg sizes, which are based on minimum weight per dozen eggs.

When pricing eggs, generally speaking, if there is less than a seven cent price spread per dozen eggs between one size and the next smaller size in the same grade, the larger size is the better buy.

## District Court Proceedings

Richard Szabo pled guilty to possession of marijuana and will be sentenced Feb. 18.

John R. Bush was fined \$75 and placed on one year probation and given 10 days in jail for driving with a suspended license. For driving under the influence of liquor, he was fined \$200 and placed on one year probation.

Rudolph Gustafson was brought in on a bench warrant for violation of probation. His probation was re-instated.

Jack Gerehick pled guilty to possession of open intoxicants in a motor vehicle and was fined \$35. He



## Special Worker Gives Program for Modern Mothers

"Hassle-free Parenting" was the program for Modern Mothers Child Study Club on Jan. 14 at the home of Dot Hume.

The program was given by Rene Robbins, who has a masters degree in social work and served as VISTA volunteer on a Navajo Indian reservation, where she implemented a Head Start program. She is currently teaching a family communication course which is designed to teach parents "reflective listening." The program's objective is to allow children "to take charge of their feelings"—to learn to make their own decisions and solutions and to establish a more open relationship between parents and child.

Mrs. Robbins answered questions and members were served refreshments by Janet Rossi, Lois Garman, and Pat Coelius.

A business meeting followed, which provided members with their third and final opportunity to amend and discuss revisions to their new constitution, to be voted on Feb. 25. If passed, it will become effective immediately. Constitution revision committee includes Barbara Brown, chairperson, Lenore Mattoff and Carol Flintoff.

Chelsea High school honors banquet was discussed, and will again be sponsored by Modern Mothers. Plans are underway for a two-year project, a crafts book. Steering committee will be appointed and will begin work soon. Proceeds from the book were discussed and will be voted upon at the Feb. 25 meeting.

Next meeting will be devoted to various crafts chosen by members.

Other models include Mrs. Ralph Brandt, William Colburn, Mrs. Robert Fransway, Mrs. Zoran Guberich, Mrs. Richard Koch, Mrs. Allen Mandel, Mrs. Robert Mount, Mrs. Dan O'Hara, Mrs. Thomas Reed, Mrs. Joseph Savarino, Mrs. Roger Schwing, Mrs. James Stephenson and Mrs. W.C. Vander-yacht.

Telephone Your Club News  
To 475-1371.

## Magic Mirror Beauty Salon

Open Tuesday thru Friday  
9 a.m. to 9 p.m.  
Saturday, 8 a.m. to 3 p.m.

PHONE 665-0816

## CARPET REBIRTH

Give your carpet a new lease on life  
by cleaning it regularly.

## JET SPRAY CARPET CLEANING

Use Your Phone 761-3025 or 475-1509  
BankAmericard Ask for John Lixey.

## Waterloo Ladies Aid Plans Future Activities

Waterloo Village United Methodist church Ladies Aid met Jan. 3 with Vella LeVan with eight members and two guests present. Following a pot-luck dinner at 12:30, President Eloise Schulz called the meeting to order with a prayer and all answered roll call with a Bible verse.

Eloise Schulz was also in charge of the program, "I wish I had known." Secretary and treasurer's report were read and approved.

Plans were made to make valentines for shut-ins. Other plans discussed included those for the World Day of Prayer March 7 and father and son banquet April 12. Bill Riehlmeier presented a reading, "Just for Today." Cards were sent to Selma Rowe, who is in Chelsea Community Hospital, and Olive Morley and Mrs. Helen Dawson, who are both in the hospital.

Meeting was closed with the benediction. Next meeting will be Feb. 12 at the home of Mary Clark.

## Woman's Club Members Tour McKune Library

Twenty members of the Woman's Club of Chelsea were conducted on a brief, informative tour of the McKune Memorial Library by library board member Mrs. Edwin Eaton.

A history of the library was given by Mrs. Thomas Smith, and Mrs. Elwin Barth provided a description of the various categories and many services of the library.

Mrs. Robert Allshouse conducted a business meeting, at which two new members joined the club, Mrs. Vito LaBarbara and Mrs. William Briston.

Next regular meeting is to be held Jan. 28 at The Village Bakery, which will adopt a Japanese transformation for the evening and will be the setting for a wok cooking demonstration.

Members are urged to join in the spirit of the evening by dressing in an oriental manner if they can do so. This meeting will not be open to guests.

## TOWN AND COUNTRY CHILD STUDY CLUB

Town and Country Child Study Club met at the home of Sherri Lawton on Jan. 14. Co-hostess was Judy Syria. Guests present were Mrs. Cindy Colvin, Mrs. Carrie Eisenbeiser, Mrs. Janis Miller, and Mrs. Sue Teare.

Miss Dorothy Downer from Detroit Edison gave a talk on conservation of energy within the home.

Next meeting will be Jan. 28, at the home of Mrs. Joanne Waller. Guests are invited.

## Legion Auxiliary Reports Given on Christmas Projects

Regular meeting of Herbert J. McKune Unit No. 31 was held Tuesday, Jan. 7 at Chelsea United Methodist Home, preceded by a pot-luck and Christmas gift exchange, both events rescheduled from December.

It was voted to order the same number of poppies as in previous years.

Rehabilitation chairman Ruth Chriswell reported on the gift shop held at Veterans Administration Hospital in Ann Arbor, Dec. 3, 4 and 5. A total of 38 gifts were purchased by the Chelsea Unit for this project. More than 200 patients at this hospital selected gifts for members of their families.

Several pairs of scuffles have also been recently sent to the hospital, and more are needed.

Two Gold Star members were remembered at Christmas time.

Gifts were presented to Alice Miller in honor of her 50th wedding anniversary and to the new baby son of Darlene Johnson.

District meeting is scheduled for Jan. 19 at Tecumseh. Next meeting of Unit No. 31 is Feb. 4 at Chelsea United Methodist Home.

## VFW Auxiliary Hears Report on District Meeting

Regular business session of VFW Auxiliary to Post 4076 was held Monday, Jan. 13, in the VFW hall with 11 members in attendance.

Eulahlee Packard gave a report of the sixth district meeting held Sunday, Jan. 12, in Hamburg. This was the official visit of the state president, Jean Karafa, to District VI. The next district meeting will be March 2 at Fowlerville.

The charter was draped in memory of Gertrude Rhind, a past national president.

Jan. 27 social meeting will be held in the VFW hall, with a silent auction and card games, a general fun night. Guests will be welcome.

## Federated Womens Clubs Will Hear SEMOG Debate

Washtenaw County Clerk Robert Harrison and University of Michigan law professor and former mayor of Ann Arbor Robert Harris will be speakers at the winter meeting of the Washtenaw County Federation of Women's Clubs on Monday, Jan. 20.

Program topic for the afternoon will be "SEMOG—Pro and Con," a subject of lively current debate. The value to Washtenaw county of membership in the Southeastern Michigan Council of Governments (SEMOG) is being questioned particularly by Ann Arbor City Council.

This meeting was arranged by the Federation's Americanism chairman, Mrs. Walter L. Bulbick, and will be held at the Lutheran Retirement Center on Earheart Rd., near US23 and Plymouth Rd., Ann Arbor. Registration is scheduled for 1 p.m. and the program begins at 1:30 p.m.

Business and professional women's clubs of Pittsfield and Ann Arbor are hostesses for the meeting.



**NEW TERM, NEW RESPONSIBILITIES:** State Senator Gilbert Bursley of Ann Arbor was sworn in Jan. 8 for the new four-year term granted him by 18th Senate District voters in November. Administering the oath was State Supreme Court Justice John W. Fitzgerald, as opening ceremonies for the 78th Legislature were conducted in the Senate Chamber. Bursley, considered the leading Senate authority on education, will work on the Education, Colleges and Universities, and Health and Social Services committee during the new session. In addition, Bursley was elected by other Senators as Assistant President Pro-Tempore of the Senate. He was the only Republican Senator selected by the Democratic dominated Senate to share duties as presiding officer with Lt. Governor James Damman, who also serves as President of the Senate.



## NORTH ELEMENTARY SCHOOL NOTES

### Rancher Glen Program

Rancher Glen will be at the North Elementary school on Friday, Jan. 24 to present a program on general health and smoking to the elementary students. Rancher Glen is presented by the Michigan Lung Association. He will present two programs. At 9:15 a.m., he will perform for the kindergarten, 1st and 2nd grade students. At 10:15 a.m., he will perform for the 3rd and 4th grade students.

### Second Grade

Teacher: Mrs. Walton  
We sure had a lot of things to tell about after our vacation. Most of us went sliding and skating. Some of us went on snowmobile rides. Since vacation, we have gotten new health books and another science book. We are learning about our five senses, the parts of our eye, ear and tongue. We have learned about molecules, evaporation and dissolving in our science class. Only two January birthdays—Marie and Rebecca.

We are getting used to living with the mud and the machines. Every day brings something new.

### ART

Teacher: Mrs. Coulam  
Kindergarten—For the holidays we made clear round ornaments filled with bits of colored tissue paper. They are beautiful when they hang in a window and the light shines through the colors. This year we had fun patting painted sponges over and over to build up our designs. First Grade—Before vacation we made 3-dimensional paper wreaths to decorate our homes. We began this semester with a bang. Finger painting. Wow. We mixed red, yellow and blue-paints making oranges, greens, purples and browns.

Second Grade—For our Christmas ornaments we made bakers' clay objects that look like cookies. After they were baked, we painted and hung them by yarn. After vacation, we created designs with texture by painting with sponges.

## Area Selective Service Office Sets Registration Record in '74

The area Selective Service office in Ann Arbor registered 4,621 men during calendar year 1974, according to Harold Cross, office manager.

The area office registered 990 from Lenawee, 1,520 from Monroe and 2,111 from Washtenaw counties. The figures represent the highest yearly total registration for each county for the past 10 years, Cross pointed out.

"Reports show that registration of young men age 18 in other communities outside the Ann Arbor office area have fallen off during 1974. We are proud of our registration accomplishments because it has greatly reduced the number of young men violating the requirement to register in a timely manner, Cross said.

"The increase is attributed to the co-operation of weekly newspapers like The Chelsea Standard, our representative Registrars like Mrs. Greta Welton at the Chelsea

High school, Chief of Police George Meranuck and Richard Schaules and his staff at the Chelsea Post Office for publicizing the federal requirement for every male citizen and alien resident to register with Selective Service at age 18. Also the new mail-in registration program has provided the young man to register conveniently and without difficulty," Cross added.

Individuals unable to appear in person may obtain mail-in registration forms from colorful displays located at the Chelsea High school, Post Office and Police Department.

Forms may also be obtained by writing to the Ann Arbor Selective Service System area office, Room 210, First National Building, 201 S. Main St., Ann Arbor 48108, or telephoning 665-3766.

### Benefit Basketball . . .

(Continued from page one)

junior class of Chelsea High school to raise funds for their prom. Tickets are priced at \$1 for children under 12 years; \$1.50 for students; and \$2 for adults, and will be available in advance from Main St. businesses. Tickets at the door will be priced at \$2.25.

The March of Dimes supports programs for intensive care of "high-risk" pregnant women and sick newborns to help improve maternal and infant health.

# Nutrition Program for Seniors Providing More Than Food

Nutrition may indeed be the motivation behind the Office of Economic Opportunity's Senior Citizen Nutrition Program in Chelsea, but seniors themselves rate some other things just as important.

The program's title, "Food, Fun, and Fellowship" gives a clue to what goes on at St. Mary's school in the program.

"The biggest thing about this program," says Mrs. Betty Koch, site co-ordinator for the program, "is that it breaks up people's days. They can come here—and some of them start arriving at around 10:15 in the morning—talk to their friends, listen to our programs, eat their meal, play cards. The biggest part of the program is that it allows them to see other people."

The program operates weekdays at the school under the auspices of the OEO, which has sponsored similar programs in Ann Arbor, Ypsilanti, and Willow Run. Lunches are served for up to 30 participants for ideally 25 cents per meal, although Mrs. Koch notes that "We don't really collect for the meals. We have a container out here; they give what they can. Some people pay only a little, but others who can afford it pay more."

Lunches are available, Mrs. Koch said, for any senior over the age of 60, regardless of economic standing, and also for under-60 spouses. Meals are cooked at Chelsea United Methodist Home. Transportation is available to St. Mary's from the program driver.

Currently attendance runs around 22 people daily, Mrs. Koch said, which leaves room for eight more participants. She notes that some of those most vehemently opposed to the program at first have shown up after their friends began to come.

"Some of them think of it as charity," Mrs. Koch says. "And they say that they won't come. But people are paying for these meals, when they can. And I think they deserve a program like this."

Mrs. Hilda Pierce, lingering only momentarily after her meal and a hand of cards before returning to collect Lima township taxes, agreed with Mrs. Koch. "People say this is charity, and they won't come. Well, so what if it is? Other places have it; why shouldn't Chelsea?"

The avoidance of any "charity" appears to be the major problem that the Nutrition Program has had to deal with. Mrs. Thelma Franklin, while admitting that she "wouldn't be caught dead there" because the program is "charity," states that she believes that "this is the best thing that ever happened to Chelsea."

Depression, Mrs. Franklin says, had been a very real problem with her before she began to participate in the Nutrition Program.

"This breaks up the day, though; I see people that I haven't seen in years, and more people than I ever used to see in a day. Sometimes I play cards, and sometimes we have people come in to speak to us."

Another woman across the table urges her to join the Senior Citizens group that meets in the OEO house on Park St. "We play cards some nights, have our social meetings, and birthday parties—you should really come, Thelma," and Mrs. Franklin looks as though another social activity will grow out of this one.

Programs of interest to seniors are planned by OEO staffers and the participants themselves, Mrs. Koch says. Scheduled soon are presentations dealing with social problems, antiques, arthritis, heart disease, safety, and co-op food arrangements. "And of course," she adds, "We have bingo on Wednesdays. They have to have bingo."

Most importantly, Mrs. Koch says, is that "we want the seniors to feel that this is their program. Like today is sort of a show-and-tell day—people have brought in their knitting and crocheting and things."

Mrs. Iva Keizer, who to the marveling of some of the other women reports that she has been known to tie off a quilt in a day, says that she comes to the program "when I have all my work done. It's a good chance to see people. I came today because I wasn't sure I'd be able to come for the rest of the week, and I wanted to come and see everyone."

Another, in passing, smiled, "Did you learn something today? We want you to learn something from us seniors!"

Maybe, at the nutrition program, a lot of people could learn things about seniors.

## FEATURING:

- ★ PERSONALIZED HAIR COLORING
- ★ PRECISION STYLE CUTS
- ★ BLOW WAVING
- ★ UNIFORM WAVING SYSTEM

Open Monday thru Saturday

## VILLAGE BEAUTY SALON

Loretta - Arlene - Carol - Janice - Janie - Sue  
107 N. MAIN, CHELSEA PHONE 475-1671

# SALE BIG JANUARY CLEARANCE IN ALL DEPTS.

Save 1/4-1/3  
Up to 1/2 Off  
in All Depts.  
Ladies, Men's, Boy's,  
Girl's, Infants' and  
Household White Sale

P.S. - More Big Bargains  
on the Bargain Floor

ALL SALES FINAL - NO REFUNDS

# DANCER'S

Chelsea's Friendly Dept. Store

## CHELSEA JAYCEES

Committed  
to Community  
Betterment

Congratulations  
on Your  
20th  
Anniversary  
of serving the  
Chelsea  
Community



## CHELSEA JAYCEE AUXILIARY

### JANUARY SPECIALS:

## LITTLE ROOSTER RESTAURANT

Phone 426-8668 11485 N. Territorial Rd.

THURSDAY, 5 to 9 p.m. - SPAGHETTI DINNER  
ALL YOU CAN EAT - \$2.35 per person

FRIDAY, 5 to 9 p.m. - OCEAN PERCH DINNER  
All the Perch You Can Eat - \$2.45 per person

In addition to our regular menu, we are now serving our own  
HOME-MADE PIZZAS after 5 p.m.

OPEN Tues., Wed., Thurs., 4 to 10 p.m., Fri., Sat., 11 a.m. to 10 p.m.  
Sun., 11 a.m. to 9 p.m. Closed Mondays.

## SCHOOL LUNCH MENU

### Week of Jan. 20-24

Monday—Pizza, buttered beans, bread with peanut butter, fruit cobbler, and milk.

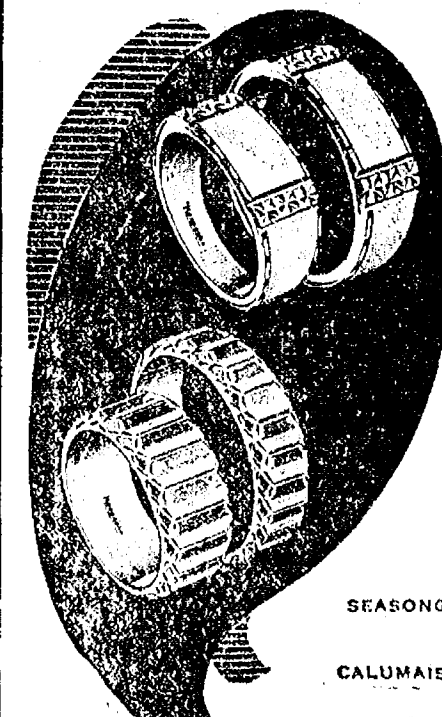
Tuesday—Hamburgers on buns with trimmings, buttered corn, tatar sticks, cake with topping, and milk.

Wednesday—Goulash, creamy cole slaw, biscuit and butter, chilled fruit, and milk.

Thursday—Hoagie sandwich on hot dog buns, French fries, vanilla pudding, cookie, and milk.

Friday—Tacos with trimmings, chicken soup, crackers, apple dessert, and milk.

Subscribe today to The Standard!



### Rite Rings

Perfectly matched wedding rings, fashioned by Keepsake in 14 karat white and yellow gold. A beautiful choice for your double-ring ceremony.

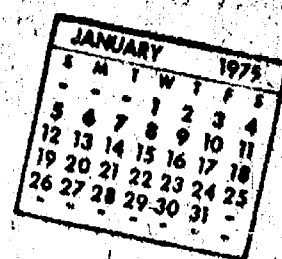
Keepsake®  
TRADITIONAL WEDDING RINGS

## WINANS JEWELRY

Rings enlarged to show detail.  
Trade-Mark Reg.



# Community Calendar



Rogers Corners Extension Group, Wednesday, Jan. 22 home of Mrs. Warren Hoover: note change of date.

Ann Arbor Saturday Night Singles, Jan. 18, Ann Arbor YM-YWCA, 350 S. Fifth Ave., Ann Arbor, 9 p.m. to 12 midnight. Mike Stellute Orchestra.

Beach Middle school semi-annual art show, Thursday, Jan. 16, 7-9 p.m. All areas of art expression will be on exhibit in the art rooms.

"Family Day," Sunday, Jan. 19, North Sharon Bible church, Grass Lake. Sunday school at 10 a.m., service at 11 a.m. A special booklet to all who come. For further information, call 428-7222.

Past Matrons pot-luck, Thursday, Jan. 16, 12:30 p.m., home of Mrs. Wilbert Smith. Bring dish to pass and own table service.

North Lake Co-op Nursery is accepting applications for 1975 school year for fun-loving three- and four-year-olds. For information, call 475-7061 or 475-7388. xadv31

Ostomy Group of Washtenaw county, Thursday, Jan. 16, 7:30 p.m., Senior Citizens' Guild, 502 W. Huron. Ann Arbor. Discussion of surgical appliances.

Olive Lodge No. 156 F & AM, banquet, Saturday, Jan. 25, dinner at 7 p.m., St. Paul church. Program following. Reservations with Don Dancer by Jan. 20. Masons and friends invited.

Weekly Ann Arbor Saturday night singles dance, live band, YM-YWCA, 350 S. Fifth, Ann Arbor, 9 p.m. to 12 midnight.

Lamaze Association of Ann Arbor is now holding classes at the Chelsea Community Hospital. If interested, call 761-4402, or 475-9316.

Chelsea Home Meal Service delivers one hot meal a day to elderly and disabled living in the Chelsea area. For information call 475-8014 or 475-2923.

Chelsea Band Boosters meet second Thursday of every month, Chelsea High school band room, 8 p.m. All band parents are members.

Pap tests are free for all area women, Tuesday mornings, at St. Joseph Mercy Hospital, Ann Arbor. Call American Cancer Society office, 668-8887 for appointment.

Young Homemakers, Wednesday, Jan. 22 (note change of date) at home of Arlene Barels, 10411 Dexter-Chelsea Rd., 8 p.m. Lella Bauer will show slides of her trip to Hawaii.

Polka dance for charity, Ann Arbor American Legion, Jan. 25, 9 p.m.-1 a.m. \$4 at the door, \$3 in advance. Call 426-4284 or 769-5487 for tickets. xadv32

Chelsea Kiwanis Club, Monday, Jan. 20, 6:30 p.m., Fair Service Center. Farmers Recognition Night, with Dale Ball as guest speaker.

Junior Achievement open house, Tuesday, Jan. 28, Beach Middle school, 6 to 9 p.m.

Open meeting, Sunday, Jan. 19, 7:30 p.m., Office of Economic Opportunity, 140 Park St. (former Methodist parsonage) for all concerned with the problems of local young people.

Sylvan Township Board meeting the first Tuesday of the month, at 7 p.m., at Sylvan Township Hall.

Chelsea VFW Post No. 4076, Wednesday, Jan. 22, 8 p.m., 105-B N. Main St.

Inquiries regarding the Chelsea blood bank may be directed to Harold Jones in the event that Mrs. Dudley Holmes is unavailable, or to Robert Moyer, American Red Cross in Ann Arbor, 971-5300.

Pack 415, pack meeting, Tuesday, Jan. 28, 7:30 p.m., Chelsea High school.

American Legion and Auxiliary hospital equipment available by contacting Pat Merkel at 475-1824.

Chelsea Co-op Nursery applications for 1975 classes are now being taken. For information, call Jearl Mull, 426-8822. xadv121f

Senior Citizen Fun Nite every Friday evening at 7:30.

Humane Society of Huron Valley has dogs and cats for adoption. Owners may reclaim their lost pets. Phone 662-5585. Open from 9 a.m. to 5 p.m. daily; Sunday, 1 p.m. to 5 p.m. 100 Cherry Hill Rd., quarter-mile south of Plymouth Rd. at Dixboro.

Weekly Tuesday Nite Singles Club, dance, 9 p.m. to midnight, Ann Arbor YM-YWCA, with live band.

## Letters to the Editor

To All Sincerely Concerned:  
There will be an open meeting on Jan. 19 at 7:30 p.m. at the office of Economic Opportunity at 140 Park St. The purpose of this meeting is to bring together all of the people who are concerned with the problems of our young people. We hope to reach solutions with positive action. We hope to see all of you on Jan. 19 at 7:30 p.m.

Donald and Cheryl Spector.

Dear Editor:  
In The Chelsea Standard of last week, Chief Meranuck stated that "a police cadet program has already been attempted in the local police department." He went on to say that the few people who responded to this program lost interest when the department didn't consistently entertain them with life and death situations.

I violently disagree with this. I was in this Explorer group, and I know what went on. We had a group of six strong comers for about three months, and when you are faced with boredom for three months, you lose interest. I'm not blaming Officer Graves or the group for the boredom. Both did their best. The fact is, Chelsea is a very boring town, and every once in a while you need something to break that boredom.

We did have a few activities, such as a Police Academy to attend, parking assignments, a car marathon, and riding patrol. Most of these fun things we could've done like the car marathon was almost impossible to do. Besides the distance of many miles, we would have had to get everybody together and only had one driver among us. Officer Graves couldn't go with us, so we would have been lost. There are many other things that had to do with our participation. Jobs of different types, time problems, etc. I quit because I didn't have the time for it.

Chief Meranuck had no right to say what he did because it isn't true. No one was to blame. It just happened.

Sincerely,  
Robin Schneider.

## Meeting Set To Study Needs of Young People

A meeting has been scheduled for Sunday, Jan. 19, at 7:30 p.m. in the Office of Economic Opportunity headquarters at 140 Park St., for people "interested in the young people of the community." Those wishing more information may contact Donald and Cheryl Spector at 475-9301.

Not only can exposure to excessive sound levels result in hearing losses, but also can be dangerous to the heart and blood vessels, according to hearing specialists.



THE MILAN PRESS is in action here, probably just as the Bulldogs recall it. Dave Alber (40) searches for an open man, while four Big Red players surround him and Rick Sweeney (22). Bulls dogs fell to the undefeated Milan squad, 84-41.

## DEATHS

### Mrs. Ben Perry

#### Area Women's Grandmother Dies While Visiting Here

Mrs. Ben (Margaret D.) Perry, 80, of Gleneden Beach, Ore., died Saturday, Jan. 11, at the Chelsea Medical Center. She had been visiting relatives in the Chelsea area when she became ill.

Mrs. Perry was born Feb. 8, 1894 in Wynnewood, Okla., a daughter of John and Paralee Griffin Deputy.

She was married to Ben Perry on Sept. 18, 1916. He preceded her in death on Feb. 18, 1963. They had lived for many years in Detroit. Three years ago Mrs. Perry moved to Oregon with a daughter and family to make her home there.

Surviving is the daughter, Mrs. Paul (Buena) Van Dam, eight grandchildren, among whom are included Mrs. Bruce (Karen) Galbraith and Mrs. Thomas (Martha) Neumeyer, both of Chelsea, as well as 12 great-grandchildren and a sister, Mrs. Buena Jackson of Langley Field, Va. She was preceded in death by another daughter, Mrs. Lahoma Sacra of Alpena in 1970.

Funeral services were held Monday, Jan. 13 at 1 p.m. at the Burghardt Funeral Home with the Rev. William Keller officiating. Burial took place in Forest Lawn Cemetery, Detroit.

### Mrs. John Hofhanesian

#### Grass Lake Resident Dies Saturday at U-M Hospital

Mrs. John (Chrisoula) B. Hofhanesian, 333 North Lake St., Grass Lake, died Saturday, Jan. 11 at University of Michigan Hospital in Ann Arbor at the age of 51.

Born July 22, 1923 at Lansing, she was the daughter of Mike and Pauline Welton Misalides. She married John Hofhanesian on Sept. 15, 1951. He survives.

She was a member of Emmanuel United Church of Christ in Manchester, and was a past president of the Women's Fellowship of the church.

Surviving in addition to her husband are one son, Dorian, at home, and one daughter, Melanie, at home; and two brothers, Sam Misalides and Malatios Misalides, both of Ann Arbor.

Funeral services were conducted Tuesday, Jan. 14, at 2 p.m. at Emmanuel United Church of Christ in Manchester by Pastor Joseph W. Wise. Burial followed in Oak Grove Cemetery, Chelsea. Arrangements were by Staffan Funeral Home.

Those who wish to do so may make donations to the Kidney Foundation.

## Dee Scholz in England As Exchange Student from EMU

Chelsea native Dee Scholz is one of 12 Eastern Michigan University juniors who have exchanged places for the winter semester with 12 students from Berkshire College of Education in Reading, England.

EMU information services reports that the college, located some 35 miles west of London, has a student body of approximately 1,300 preparing to become teachers, and that dormitory facilities, food, classrooms, social and recreational facilities are all comparable to those at Eastern. Exchange students take 15 semester hours and two activity hours of credit.

Classes at the English school conclude at the end of March to enable Michigan students to travel before returning for the spring term, which begins May 5.

Dee is the daughter of Mr. and Mrs. William Scholz, 515 Glazier Rd.

## Fishing Derby . . .

(Continued from page one)  
awarded for the euche tournament.

Sunday the doors will re-open at the post home at 8 a.m. No breakfast will be served, but lunch will be available from 11 a.m. on. After the contest closes, prizes will be awarded at 5 p.m.

## Winter Recreation Classes Starting . . .

(Continued from page one)  
through 18-year-olds upon passing. Adults welcome.

Course: Junior High Gymnastics.

Instructor: Mrs. Judy Ward and Mrs. Ann Schaffner.

Time: 2-4 p.m. Saturdays.

Place: Beach Middle school gym.

Fee: \$3.

Dates: Jan. 25 through March 1

Course Description: Course for junior high girls involving gymnastic equipment such as trampoline, horse, parallel bars, balance beam, and tumbling. Call Mrs. Judy Ward to register for the course at 475-1194.

Course: Biddy Wrestling.

Instructor: John Yelsik.

Time: 3:30-5 p.m. after school Thursdays and Fridays.

Place: Beach Middle school gym.

Fee: \$3.

Dates: Jan. 23 through Feb. 28.

Course Description: Biddy wrestling for 7th and 8th grade boys will show basic fundamentals of wrestling. For further information, contact John Yelsik at 475-2369.

On Jan. 1, 1975, the Veterans Administration begins paying for the first time dividends to about 300,000 Korean Conflict veterans who carry "RS" and "W" pre-fixed National Service Life Insurance policies.

## GAMBLES FOR RCA SPECIALS



RCA The PROJECTA 17 Model ET39C 17" diagonal picture

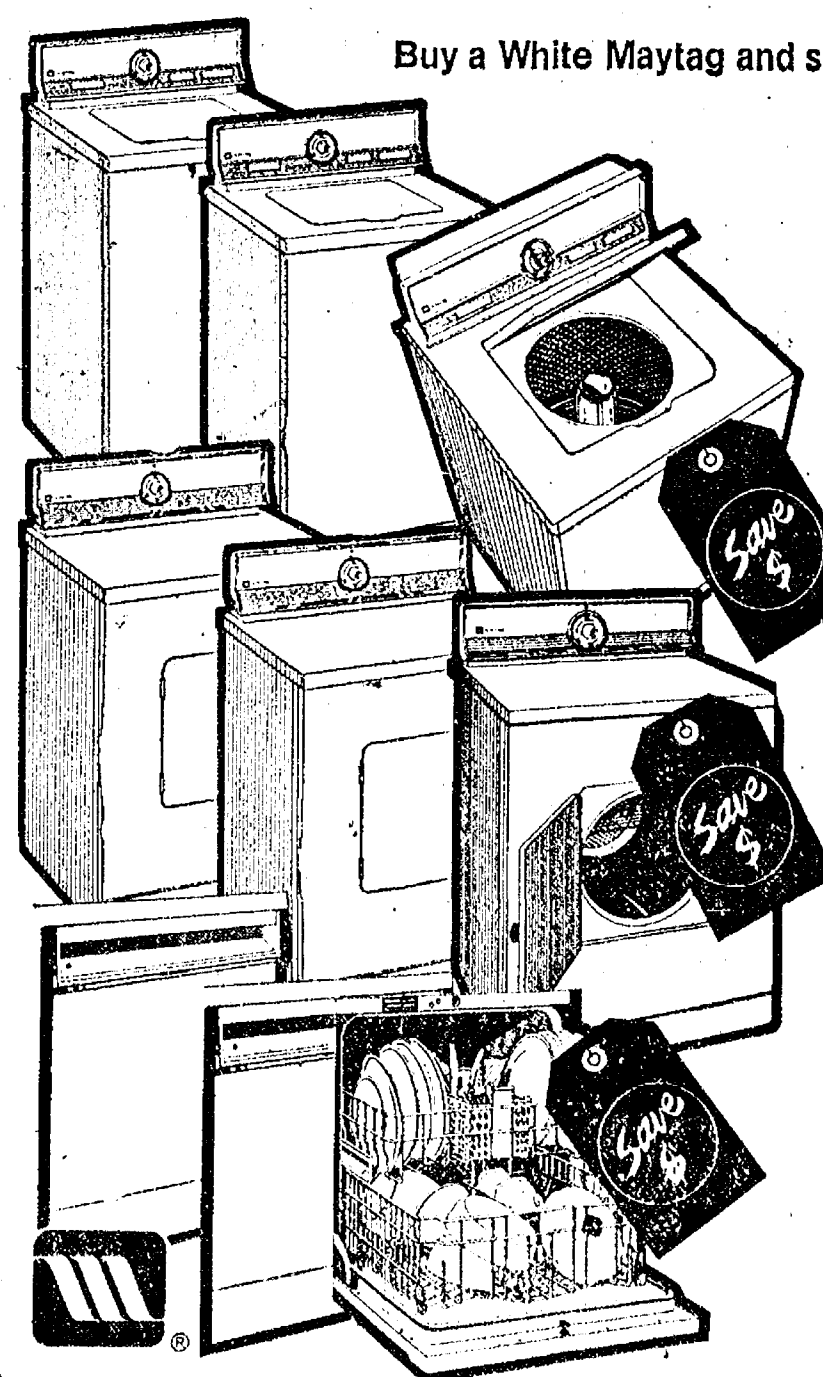
It's XL-100  
100% Solid State  
and more!

\$399<sup>00</sup>

Always Better Buys at GAMBLES!

## JANUARY WHITE SALE

## Washers Dryers Dish washers



Buy a White Maytag and save like never before. Savings on every Maytag. New Models; Discontinued Models

### MAYTAG Golden Value Automatics

If you're looking for real value for your dollar, Maytag's proven dependability is what you want. Every Maytag washer is built for dependability that lasts and lasts. Every Maytag washer has Permanent Press and regular fabric cycles that let you handle any wash day problem. Multiple water level settings. Multiple water temperature settings. Zinc coated steel cabinet with extra tough acrylic enamel finish resists rusting. Maytag's famous helical drive helps keep servicemen lonely. Amazing Power fin agitator means clean washes. Compare what you get and you'll buy the Maytag Value Automatic — an investment in dependability.

### MAYTAG Golden Value Dryers

Built and priced for real value — famous Maytag Halo of Heat® dryers all feature Permanent Press, regular and air fluff settings to make drying today's fabrics simple. Quality Maytag engineering means years of efficient, economic service. Famous Maytag Halo of Heat® drying gently dries clothes in a smooth porcelain enamel drum. Zinc coated steel cabinet with extra tough acrylic enamel finish fights off rust and provides lasting beauty. The Golden Value dryer — an investment in quality and dependability at a price you'll like.

### MAYTAG Golden Value Dishwashers

with the sensational new "Power Module" You get Maytag dependability and exceptional value too, with every Maytag Dishwasher. Unsurpassed capacity makes loading bulky pots and pans simple. And Maytag dishwashers are engineered to last and last. The sensational new "Power Module" is designed to cut installation and service costs. See a demonstration of the Golden Value Maytag dishwasher and you'll see why "Maytag is the one to buy in the first place."

Maytag Dependability — the most important feature of all!



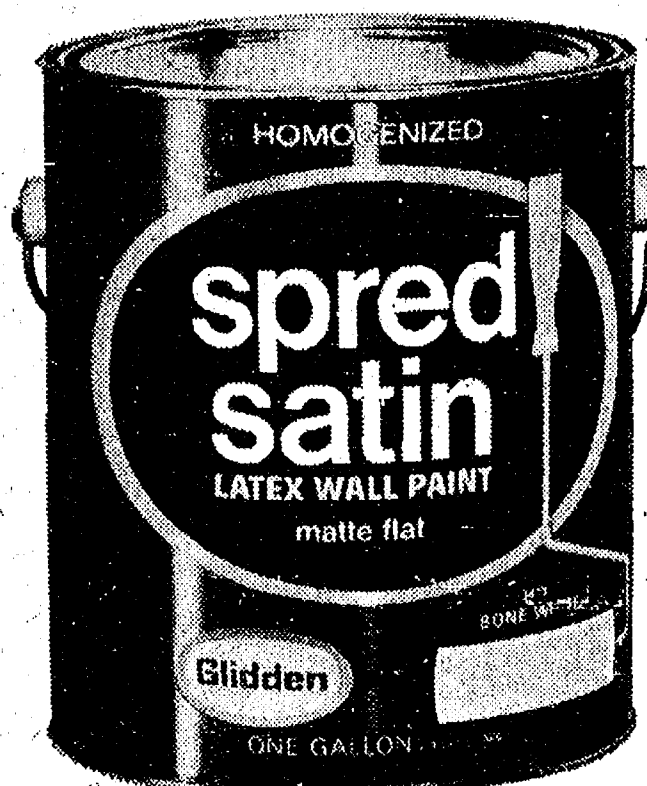
# HEYDLAUFF'S

113 N. Main St., Chelsea

Ph. 475-1221

## SPRED PAINTS

latex wall paint and latex enamel  
BOTH EASY TO APPLY, WASH-UP WITH WATER  
YOU SAVE TIME AND GET A BETTER LOOKING JOB



SPRED SATIN®  
LATEX WALL PAINT

\$6<sup>95</sup> gal. NOW THRU SAT.  
REG. \$8.50



SPRED® LATEX  
SEMI-GLOSS  
ENAMEL

\$2<sup>95</sup> qt. NOW THRU SAT.  
REG. \$3.85

ONLY at "The Friendly One" Can You Get  
CUSTOM COLOR - MIXING FREE

# CHELSEA LUMBER

Why Pay More!

## BIRTHS

A son, Mark Eugene, on Jan. 9 in Lakenheath, England, to Master Sgt. Ray F. Kenner and wife, Patsy, of Bentwaters Air Force Base, England. Maternal grandparents are Mr. and Mrs. Eugene Hagaman of Chelsea; paternal grandparents are Mr. and Mrs. Ernest Kenner of Manchester. Paternal great-grandmother is Mrs. Amelia Kenner of Manchester.

March of Dimes volunteers assist in prenatal care projects, public health information programs, and community service to help with prevention of birth defects.

## CHELSEA FINANCE CORP.

\$25 to \$1,500

For Any  
Worthwhile Purpose

See or Call  
FRANK HILL  
at 475-8631

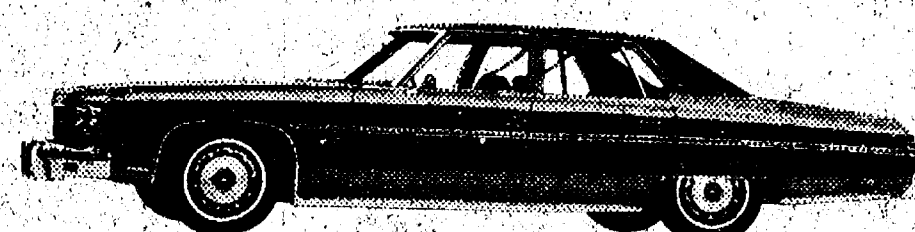
111 PARK STREET  
CHELSEA, MICH.



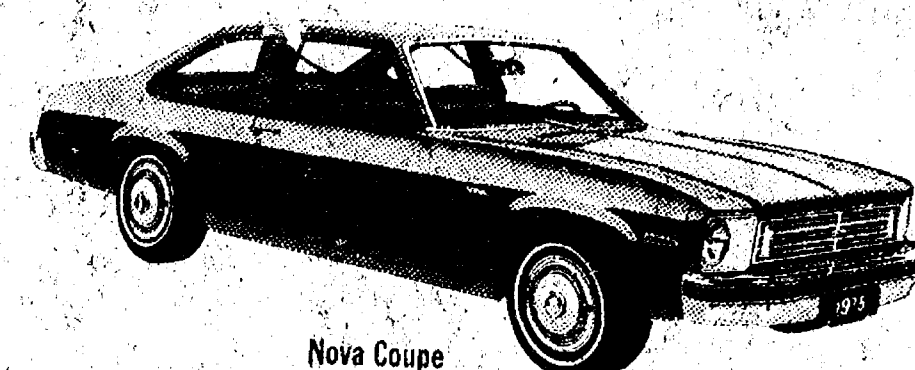
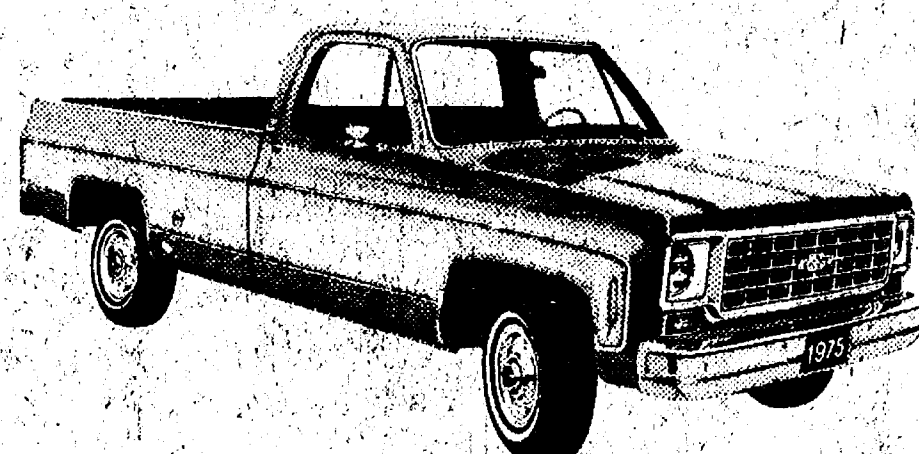
# JANUARY CLEARANCE SALE

## OVER 90 NEW '75 CHEVROLETS IN STOCK

Buy A New Car or Truck Now and Save Hundreds of Dollars  
and Enjoy America's Most Economical Transportation



Caprice Classic 4-Dr. Sedan



Nova Coupe

**WE HAVE A FEW '74's LEFT AT EXCEPTIONAL SAVINGS!**

**Check These Units To See If They Fit Your Transportation Needs and Save \$\$\$**

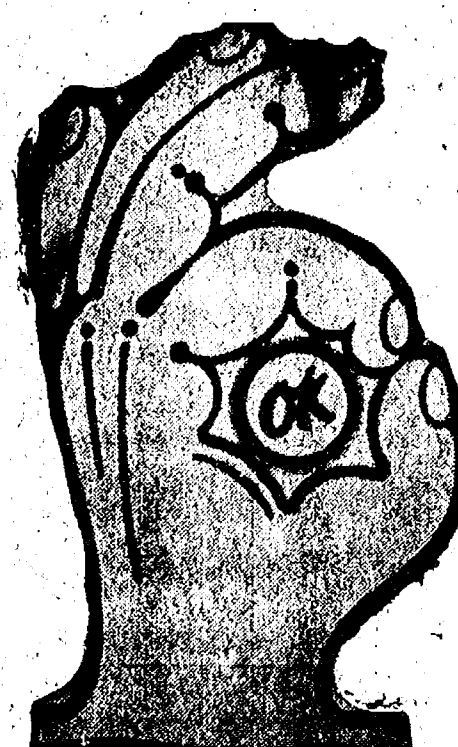
2 Vega Stationwagons — 2 Impala 2-Doors — 1 Kingswood Stationwagon Demo  
1 Chevy Luv Truck — 1 Stake Truck (1-Ton) — 2 1-Ton 10-ft. Vans

### USED CAR SPECIAL OF THE WEEK

#### 1974 VEGA KAMBACK WAGON

4-speed transmission, AM-FM  
radio, white walls. Fully equip-  
ped. 10,000 ACTUAL miles.  
Factory warranty.

**\$2495<sup>00</sup>**



### USED TRUCK SPECIAL OF THE WEEK

#### 1973 CHEVY 1/2-TON PICK-UP

8-ft. box - Fleetside, 6-cylinder,  
standard shift. For real econ-  
omy, buy this one!

**\$2295<sup>00</sup>**

**NOW... Is the Time To Purchase A New or Used Car or Truck  
of Your Choice. The Price Will Never Be Lower and the  
Value Will Never Be Greater!**

## LLOYD BRIDGES CHEVROLET

*'For Quality and Service At Low Prices'*



405 N. MAIN  
CHELSEA

### SALES HOURS

OPEN DAILY . . 8 a.m. to 6 p.m.  
SATURDAY . . . 8 a.m. to 1 p.m.  
MONDAY Evenings Until 8:30 p.m.



**475-1373**



Ads  
Taken  
Fill 1 p.m.  
Tuesday

# USE ACTION-PACKED WANT ADS

Just  
Phone  
475-1371

## WANT ADS

### The Chelsea Standard WANT AD RATES

**PAID IN ADVANCE**—An regular ad. 15 cents for 25 words or less, each insertion. Count each figure as a word. For more than 25 words add 1 cent per word for each insertion. "Blind" ads or box numbers add 50¢ extra per insertion.

**CHARGE RATES**—Same as cash in advance. With 25 cents bookkeeping charge if not paid before 1 p.m. Tuesday preceding publication. Pay in advance. Send cash or money order.

**DISPLAY WANT ADS**—Rate, \$1.40 per column inch, single column, width only. Spacing and 14-point light type only. No borders or boldface type. Minimum 1 inch.

**CARDS OF THANKS or MEMORIALS**—Single paragraph style, \$1.50 per insertion for 50 words or less; 5 cents per word beyond 50 words.

**COPY DEADLINE**—1 p.m. Tuesday week of publication.

**FREE**—Four 3-mo.-old female kittens, litter trained. Ph. 475-8510. x21f

C—ustom Built Homes

O—h! We Remodel too

U—can count on us

N—o Job Too Small

T—rim Inside & Out

R—ough-in Only If

Y—ou Want to Finish

S—iding Aluminum, 5" Gutters

I—mmediate Attention

D—ALE COOK & CO.

E—stimates, Free

**BUILDERS**

Please Call

475-8863

**DALE COOK**

174f

**CAR RENTAL** by the day, week, month, or longer. Full insurance coverage, low rates. Call

Lyle Christwell at Palmer Motor Sales, 475-1301. x80f

**WILL DO** chair caning. Call 685-9881. x33

**GUTTERS**

**SEAMLESS** aluminum eaves-troughs installed. White and brown. Call Wilson Metal Shop, Manchester, 428-8468. x81f

**FOR RENT**—2-bedroom apartment, Dexter area, partially furnished, all utilities paid. 428-3407 or 428-3961. x30

**McCulloch**

Portable Generators

Chain Saws

WE SELL, SERVICE, SHARPEN AND TRADE.

**Chelsea Hardware**

214f

**COUPLES** without previous business experience but willing to work and learn together. Pleasant profitable work. Contact local

away distributors Ray and Lois Miles and get the whole story. Ph. 475-2864. x33

## WANT ADS

**CALL NOW  
SAVE \$\$\$  
Greenwood**

**Siding - Remodeling**  
**FREE ESTIMATES**  
Call  
Chelsea 475-2400 x20f

**Pickup Caps & Covers**

For all makes and models. Standard and custom designed. From \$147.00. Free brochure.

**PIONEER COACH  
MANUFACTURING CO.**  
3498 Pontiac Trail  
Ann Arbor, 668-6785 x42f

**Chelsea Schools**

**4-BEDROOM** Colonial, all aluminum exterior, completely remodeled, with barn on three acres. One mile from Chelsea and I-94. \$39,500. Call 475-2403. x31

**KNAPP SHOES**  
For Cushion Comfort  
**Robert Robbins**  
475-7282 x48f

**Real Estate One  
Of Washtenaw**

1196 M-52

Chelsea, Mich. 48118

We Make Things Simpler For You!

**FOR THE EXECUTIVE**—2 years old, new custom built, 4-bedroom, family room with fireplace, 2 1/2 baths, basement, 10 or 20 acres with woods, \$55,000.

**10 ACRES** between Chelsea and Manchester. Beautiful rolling property surveyed, \$15,000. Terms: 10% down, balance in 12 months.

**DRASTICALLY REDUCED** for quick sale. 3-bedroom, 2-bath tastefully decorated home in Chelsea. Financing available. Truly comfortable living. \$35,000.

**IMMACULATE RANCH** on 1 acre. 25 minutes from Chelsea. Charm with economy. Pretty as a picture. \$32,900. Call today.

**DAYS - 475-8693**

**Evenings:**  
Paul Erickson ..... 475-1748  
Tina Cotton ..... 475-2837  
Bob Myrmet ..... 428-3356  
Ted Picklesimer ..... 475-8174  
Ed Coy ..... 428-8235  
Al Kleis ..... 475-7232 x31

**KETO USED CARS**  
1968 CHEV. 2-door, Caprice, V-8, auto. trans. - \$295.  
8080 Grand - Dexter  
428-4535 x31

**KETO USED CARS**  
Gem-top for Ranchero ..... \$95  
Rubber car floor mats ..... ea. 50¢  
Trailer Hitches ..... from \$5.00  
Stock rack for Ford Pick-up ..... \$50

8080 Grand - Dexter

428-4535 x31

**A CHRYSLER LAY-OFF** employee would like to help with your home interior decorating, painting, repairs. Good work at a reasonable price. Gerry Giffin, 475-2201. x32

## WANT ADS

**TV REPAIR** and service. House calls. Free tube testing. Antennas installed and repaired. Free estimates. Barry J. TV, 8071 Main, Dexter, 428-8181. 161f

**'74 DEMO SALE**

**'74 PLYMOUTH** Satellite Custom 4-dr. sedan, 318, auto., p.s., a/c, air cond. .... SAVE

**New '74's at  
Year-End Sale Prices**

11 new '74 cars and trucks in stock for immediate delivery.

**Quality Used Cars**

**'74 PLYMOUTH** Fury III 4-dr. hardtop 360, auto., p.s., p.b., air cond., rear defogger, radios ..... \$3495

**'73 DATSUN** pickup, auto. trans., step bumper, new spare, 18,000 miles ..... \$2595

**'73 PLYMOUTH** Fury I 4-dr., V-8, auto., p.s., p.b., air cond. .... \$1495

**'72 CHEVY** El Camiro, 350, auto., p.s., p.b., ..... \$1995

**'72 CHEVY** Impala 4-dr. hardtop, 400, auto., p.s., p.b., air cond., vinyl roof ..... \$2195

**'72 PLYMOUTH** Fury III 4-dr. sedan, 318, auto., p.s., air cond., new tires, low mileage ..... \$2195

**'71 DART** Swinger, 318, auto., p.s., low mileage ..... \$1795

**'69 PONTIAC** Firebird, 350, auto., p.s., p.b., ..... \$1395

**'69 CHEVY** Van, V-8, rear heater, AM radio ..... \$895

**'69 CHEVY** Impala 4-dr. sedan, V-8, auto., p.s., ..... \$1195

**'67 VALIANT** 2-dr., 6-cyl., auto. .... \$395

**Village  
Motor Sales, Inc.**  
IMPERIAL - CHRYSLER  
DODGE - PLYMOUTH  
Phone 475-8661  
1185 Manchester Rd., Chelsea  
Hours: 8 a.m. to 6 p.m.  
Tues. thru Fri. Until 9 Monday  
9 a.m. to 1 p.m. Saturday x51f

**THORNTON**

**LANEWOOD**—We have several 4-bedroom homes from which to choose. All feature family room with fireplace and 2 1/2 baths. Call us for details.

**IN TOWN**—Nicely restored older home on lovely 3/4 acre lot. Pleasant screened porch, large heated garage, storage building. Perfect for a small family. Low \$30's.

**JUST LISTED**—Nice starter home at Wolf Lake, 2 bedrooms. Appliances included. \$14,500.

**CHELSEA VILLAGE**—Redecorate, and turn this older home into a charm. Lovely large kitchen, front porch, garage. \$27,500.

**GOOD OPPORTUNITY** to purchase income property. Older duplex available in Chelsea Village. Two 2-bedroom units, extra large yard. \$30's.

**VACANT LAND** in Chelsea School District. 1- and 2-acre parcels, some with lake access. Also 10 acres near I-94.

**ROBERT H.  
THORNTON**  
JR. PC  
REALTOR  
828 S. Main St., Chelsea 475-8628  
Bob Riemenschneider ..... 475-1469  
Mark McKernan ..... 475-8424  
John Pierson ..... 475-2084  
Bob Thornton ..... 475-8857 x31

**FOR SALE**—Aqua couch and chair set, \$35. Ph. 475-7504. x31

**YES**  
WE ARE MAKING  
LONG-TERM FARM  
REAL ESTATE  
LOANS

**SEE US**

**Federal  
LAND BANK**  
Association

P. O. Box 1005

Ph. 769-2411 3645 Jackson Rd.

Ann Arbor, Mich. 48106



"I bet the boys at the photo shop that uses he  
Standard Want Ads—will wonder who's who!"

## WANT ADS

**BUILDERS**—House and barn roofing, all types of roof repairs, aluminum storm windows and doors, aluminum siding and gutters, awnings, porch enclosures, garage and room additions, cement work. Call Joe Hayes for free estimates. Manchester 428-8520. x16f

**CLEARANCE SALE**  
On All  
**SNOW TIRES**

**ALL TIRES  
GUARANTEED**

**Full 4-Ply Polyester**

Size	Price	Fed Tax
A78-13	\$22.95	\$1.78
C78-13	\$23.95	\$1.99
C78-14	\$24.50	\$2.07
F78-14	\$24.95	\$2.24
F78-14	\$25.95	\$2.41
G78-14	\$27.25	\$2.55
H78-14	\$28.95	\$2.77
G78-15	\$27.50	\$2.63
H78-15	\$28.50	\$2.82

**Belted**  
2 Polyester, 2 Fiberglass  
Belts

Size	Price	Fed Tax
E78-14	\$25.95	\$2.33
G78-14	\$29.25	\$2.67
H78-14	\$30.95	\$2.92
G78-15	\$29.50	\$2.74
F78-14	\$27.95	\$2.50
H78-15	\$30.50	\$2.97
H78-15	\$31.50	\$3.13
L78-15	\$32.95	\$3.19

**FREE MOUNTING  
BALANCING EXTRA  
STUDS AVAILABLE**

**CHARGE CARDS** ACCEPTED  
Standard Oil  
Bank Americard  
Master Charge  
American Express  
Diners Clubs  
Carte Blanche

**Palmer Motor Sales**  
62 Years in Chelsea  
Since April 1912  
Chelsea 475-1301 x32

**REAL ESTATE**

**NORTH LAKE**—3- or 4-bedroom home. Ideal for handy man to fix up. Nicely located on 2 lots.

**FIVE ACRES** with nearly new 3-bedroom home. Stockbridge schools. Low thirties.

**3-BEDROOM** country home. On blacktop. Excellent condition.

**BUSHNELL REALTY**  
Chelsea 475-7180 x31

**KETO USED CARS**  
1967 BUICK, 4 door, V-8, auto. trans., power steering - \$395.  
8080 Grand - Dexter  
428-4535 x31

**FOR RENT** in Stockbridge 2-bedroom, unfurnished apartment \$150, and also one furnished studio apartment, for one person only. \$100. Call (517) 373-6550, day time after 4 p.m., (517) 851-8353. x31

## WANT ADS

**General Carpentry**  
Also Repairs

Chelsea Ph. 475-9209 x47f

**DEPENDABLE TREE SERVICE**—Cutting and removing. Call 428-4110. x19f

**QUALITY ROOFING**—Roofing, siding, repairs. Free estimates. 428-3185 or 971-4339. x15 f

**FORMAL WEAR**  
RENTAL SERVICE  
Proms - Weddings - Special Events  
6 different colors.

**Foster's Men's Wear** x21

**D&G Allen Excavating**

Septic Tanks and Drainfields  
Back Hoe and Dozing

Sand, Gravel and Topsoil Hauled  
Phone (517) 851-8386  
or (517) 851-8278 x48f

**SHOES FOR REPAIR** picked up and delivered every Saturday at Parish's Cleaners, 113 Park St., Chelsea, Mich. x16f

**PAINTING**, interior and exterior, reasonable rates, with good references. For free estimates call 428-8395, after 4 p.m. x22f

**CUSTOM  
BUILDING**

**LICENSED & INSURED**  
**FREE ESTIMATES**

**TOTAL  
CONSTRUCTION  
SERVICES**

—Residential, commercial and industrial  
—Garages  
—Remodeling - Additions  
—Aluminum Siding  
—Roofing  
—Trenching

**SLOCUM  
CONTRACTORS  
& BUILDERS**

Serving Washtenaw County  
For Over 20 Years  
20700 OLD US-12  
CHELSEA  
Phone 475-8321 or 475-7611 x22f

**FOR SALE**—Men's skis, 190 cm., fiberglass; aluminum poles; size 8 1/2 men's boots with carrier. 2 16-inch tires and wheels, also aluminum collapsible artists' easel. Ph. 475-8363. x31

**MAUSOLEUMS \* MONUMENTS  
BRONZE TABLETS \* MARKERS**

**BECKER  
MEMORIALS**  
6033 Jackson Road  
ANN ARBOR, MICHIGAN

## WANT ADS

**CLOGGED  
SEWER**

**Reynolds Sewer  
Service**

We Clean Sewers Without Digging  
Drains Cleaned Electrically

**FREE ESTIMATES**  
**2-YEAR GUARANTEE**

Phone Ann Arbor NO 2-5277  
"Sewer Cleaning Is Our Business—  
Not a Side-Line" x81f

**GAR - NETT'S  
Flower & Gift Shop**

Your Friendly Florist  
112 E. Middle St., Chelsea

**PHONE 475-1400**

Funeral Flowers  
Wedding Flowers  
Cut Flowers (arranged or boxed)  
Potted Flowering Plants  
Green Plants - Corsages

**WE DELIVER** x91f

**REAL ESTATE**

**3-BEDROOM** older home, situated on 7 acres in Waterloo Recreation Area. \$32,000.

**WILL CONSIDER TRADE** on this lovely, brand new 3-bedroom home with attached garage, set in nature's own beautiful landscaping on two acres. Chelsea schools. \$49,000.

**2-ACRE BUILDING SITE**, near Joslin Lake. Surveyed and per approved. \$5,000, 7% land contract. Chelsea schools.

**WATERLOO RECREATION AREA**—20 acres with light woods, good building site, some lowland, good hunting area, \$16,500. Land contract, possible.

**WATERLOO - MUNITH AREA**—Ranch home, full basement, 2-car garage, on 40 acres. \$45,500.

**COMFORTABLE 3-bedroom** home on one floor, large sunny kitchen, family room, 2-car attached garage, basement, small apartment with privacy, on 2 acres. Chelsea schools. \$49,000.

**3-BEDROOM** farm house completely renovated, with new heating system, wiring, plumbing, insulation, new fieldstone fireplace, large new kitchen, on 10 rolling acres, adjoining state lands. Chelsea schools. \$47,500.

**BRAND NEW** spacious duplex, air conditioned, city facilities for each unit. Village of Stockbridge. \$38,900.

**5-ACRE** building site, west of Chrysler Proving Grounds. Chelsea schools. \$10,000.

**10-ACRE** building sites, flowing stream on one parcel. \$1,500 per acre. Cash or 7% land contract.

**WATERLOO REALTY**  
355 Clear Lake  
JOANN WARYWODA, BROKER

**Phone 475-8674**

**Evenings:**  
Steve Sullivan, salesman and licensed broker, 475-1748  
Sue Lowe, 475-2877. x5

**GETTING MARRIED?** Traditional and contemporary invitations and accessories. Large selection. Satisfaction guaranteed. John's Shop. 475-7500 after 5 and week-ends. x40

## WANT ADS

**A fine selection of  
New and Used Cars**

**for immediate delivery**

**Harper Pontiac  
Sales & Service**

475-1306  
Evenings, 475-1606

**Gem Travel Trailers  
and Campers**

**PICK UP COVERS**  
4" ..... \$100.00  
20" ..... \$179.00 and up

**Triangle Sales**  
Chelsea 475-4802 x40f

**FRISINGER**

**\$39,000**—New 3-bedroom ranch, dining area, 1 1/2 baths, 2-car attached garage, 1 acre.

**\$49,000**—New 3-bedroom ranch, dining area, 2 baths, 2-car attached garage, 1 acre, Chelsea schools. Land contract possible, immediate possession.

**\$20,500**—2-bedroom year-round home, Cavanaugh Lake.

**\$27,900**—3-bedroom year-round home, Hilland Lake.

**\$32,000**—3-bedroom year-round home, Pleasant Lake.

**\$52,500**—3-bedroom ranch, 1 1/2 baths, dining room, 3-car attached garage, 3 acres, Chelsea schools, blacktop road.

**\$55,000**—5-bedroom home, family room, dining room, 2 baths, frontage on private lake, 10 acres, Chelsea schools.

**HAVE 2 CLIENTS** that want large older homes in the Village of Chelsea.

**FRISINGER  
REALTORS**  
Chelsea 475-8681

**Evenings:**  
Paul Frisinger ..... 475-2621  
Toby Peterson ..... 475-2718  
Bob Koch ..... 428-4754  
Herman Koenn ..... 475-2613 x31f

**A HIGHLY SUCCESSFUL** Michigan based company is expanding in this area. We need honest ambitious people who are serious about making money. Part-time or full-time work. For information call 475-7219 or 546-4065. x31</



## WANT ADS

## SECURITY GUARDS

Chelsea, Manchester  
Whitmore Lake area.  
Phone 761-5315  
for appointment,  
or apply at  
290 S. Wagner Rd.  
Ann Arbor  
BANFORD SECURITY SERVICE,  
INC.

## - YOUNG -

We list and sell lake, country and  
Real Estate & Builder. 978-3792.  
Town properties. Eugene Young,  
11596 Dexter-Pinckney Rd., Pinck-  
ney 48189.

Roofing, Aluminum  
& Vinyl Siding  
Gutters, Storms  
& Window Trim

For Free Estimate  
Call (517) 851-8657

Mills  
Construction Co.

3986 M-52, Stockbridge

Automotive  
Rust Proofing  
Cars and Trucks

## Village

Motor Sales, Inc.  
IMPERIAL - CHRYSLER  
DODGE - PLYMOUTH  
Phone 475-8661

1185 Manchester Rd., Chelsea  
Hours: 8 a.m. to 6 p.m.  
Tues. thru Fri. Until 9 Monday.  
9 a.m. to 1 p.m. Saturday

## KETO USED CARS

1971 TOYOTA, 2 door, vinyl top, 4-  
speed .....\$995  
8080 Grand - Dexter.  
426-4535

SINCERE WORKING COUPLE  
looking for a farmhouse or  
country home for ourselves and  
two dogs. Will pay up to \$180,  
monthly. Please phone 761-8092  
persistently.

## SPECIAL OF THE WEEK

1974 Olds Delta 88 Royale 4-dr. Hardtop (Air Cond.)  
10,000 miles  
\$4195.00

National Automobile  
Dealers Association  
Average Retail Value YOUR COST

1974 OLDS CUTLASS SUPREME WAGON, 2-seat, air cond.	\$4375.00	\$3995.00
1973 OLDS CUTLASS SUPREME 2-dr. hardtop, air cond., vinyl roof, sport wheels, bucket seats, console, Black in color.	\$3325.00	\$2995.00
1973 OLDS CUTLASS SUPREME 2-dr. hardtop, air cond., vinyl roof, power seat, power windows, power door locks, rear window defogger, AM-FM stereo radio	\$3450.00	\$2995.00
1973 OLDS OMEGA HATCHBACK COUPE, air cond., vinyl roof and sport wheels	\$2700.00	\$2295.00
1973 PONTIAC Catalina 4-dr. hardtop 31,000 miles	\$2695.00	\$2295.00
1972 BUICK ELECTRA 225 4-dr. hardtop, air cond., vinyl roof and cruise control	\$3000.00	\$2495.00
1972 BUICK SKYLARK 2-dr. hardtop, air cond. vinyl roof	\$2250.00	\$1695.00
1972 FORD LTD 2-dr. hardtop, air cond., vinyl roof	\$1750.00	\$1295.00
1971 OLDS DELTA 88 Custom 4-dr. sedan, air cond., vinyl roof, rear window defogger	\$2100.00	\$1795.00
1971 OLDS CUTLASS SUPREME 2-dr. hardtop, vinyl roof, bucket seats, sport wheels	\$2150.00	\$2095.00
1971 OLDS CUTLASS SUPREME 2-dr. hardtop, radial tires and rear window defogger	\$2150.00	\$1995.00
1970 BUICK ELECTRA 225 Limited 4-dr. hardtop, air cond., fully equipped	\$1300.00	\$1195.00
1969 CHEVROLET CHEVELLE 4-dr. hardtop, V-8 automatic, power steering	\$1325.00	\$ 995.00
1968 BUICK SPECIAL 2-dr. V-8, auto- matic, power steering	\$ 950.00	\$ 795.00
THE ABOVE CARS ARE ONE OWNER NEW CAR TRADE-INS.		
1971 CHEVROLET VEGA HATCHBACK, 4-speed		\$ 795.00
1969 BUICK ELECTRA 225 LIMITED 4-dr. hardtop, air cond.		\$ 495.00
1968 CHEVROLET WAGON, air cond.		\$ 195.00

## SPRAGUE

BUICK - OLDS - OPEL, INC.  
1500 S. Main St.

## WANT ADS

## LEHMAN WAHL

Land Appraisal  
Residential  
and Farm  
17087 West Austin Rd.  
Manchester, Mich.  
Area Code 313  
428-8886

CALL FRANK for all your carpet  
cleaning jobs, morning or week-  
end. Needs only 3 hours of dry.  
Only 10¢ per square foot. Phone  
now for free estimate, 761-4328.  
All work guaranteed.

HAMMOND ORGAN teachers  
wanted to teach in their own  
homes. Call Grinnell Brothers,  
Ann Arbor, 662-5667.

FOR REAL DOLLAR SAVINGS  
be sure and see us before you  
buy any new or used car. Palmer  
Motor Sales, Inc. Your Ford Deal-  
er for over 50 years.

Sande's Texas Tack  
12005 SCIO CHURCH RD.  
CHELSEA, MICH.  
475-2586

Complete line of Western horse  
equipment. Also, boots, hats,  
purses, and wallets.

OPEN EVERY DAY, 9-9  
10% 4-H Discount

FOR SALE—Hand-made hairpin  
lace afghans. Size 88 x 44, all  
colors. Ph. (313) 498-2471.

OFFICE SPACE for rent. Call  
475-7600, ask for owner.

RUNNING LATE and can't get  
it together in the morning? Try  
a little help from us. Early Hour  
Wake Up Service. 973-0760

LEWIS PLUMBING and Heating.  
New and old work. Re-pipe  
basements, replace fixtures, fau-  
cets, water heaters. 426-2234. 2424  
Baker Rd. Dexter.

FOR RENT — American Legion  
Hall. \$50. Call 475-1824.

Sand Gravel

## KLINK

## EXCAVATING

Bulldozer - Backhoe  
Road Work - Basements  
Trucking - Crane Work  
Top Soil - Demolition  
Drainfield - Septic Tank  
Trenching, 8' up

Industrial, Residential, Commercial  
CALL 475-7681

FOR RENT in Chelsea: 2-bedroom  
apartment, partly furnished.  
Sorry no children or pets. Heat  
furnished. \$170 per month. Call  
475-8757.

USED ENGAGEMENT RING, size  
6 1/4, \$75. Ph. 475-2839.

## WANT ADS

## NOW

Full Time  
Complete  
Body Shop  
Service

Stop In For An Estimate

## PALMER FORD

222 S. Main St.  
475-1301

BUYER OF RAW FURS—7581 Dex-  
ter-Pinckney Rd., Dexter. 428-  
8856 or 428-8940.

SUNFLOWER SEEDS, Wild Bird  
Feed. Wayne dog feed and spe-  
cialty feeds. McCalla Feed Service,  
Old US-12. Ph. 475-8153.

PIANO TUNING, Chelsea and area.  
Facilities for reconditioning and  
regulating. Used piano sales; re-  
conditioned grands and verticals.  
E. Eklund. 426-4429.

EVINGER REAL ESTATE, Alpine  
St., Dexter. Phone 428-8518.

SEE US for transit mixed con-  
crete. Klumpp Bros. Gravel Co.  
Phone Chelsea 475-2530, 4920 Love-  
land Rd., Grass Lake, Mich. 404

TRAVEL TRAILERS—13 ft. and  
up; 10x55 ft. trailers. John R.  
Jones Trailer Sales, Gregory, Mich.  
Phone 498-2655.

ELECTRICAL WIRING of all  
types New and rewiring. Ph.  
426-4855.

CARPENTER—Remodeling, addi-  
tions and home building. Ph.  
426-4017.

HOME IMPROVEMENT and re-  
pair. Call Mr. Coburn, 475-2893.

RIDING LESSONS, boarding, large  
indoor arena. Now starting day  
& evening lessons for beginners  
and intermediate riders. Hunter  
seat equitation, hunting and jump-  
ing. Ph. 456-7895.

PLASTERING, lathing and dry  
wall. James O. Johnson, 426-  
3652 or 426-8191.

FOR SALE—1973 Corsair Travel  
Trailer. Fully contained. Ex-  
cellent condition, reasonably pri-  
ced. For more information call  
498-2507.

SMALL CAR  
HEADQUARTERS

NOW OPEN  
SATURDAYS, 9-6  
MON.-FRI., 9-9

A-1 Clean, Used Cars  
at low, low prices

'74 SUZUKI TS 250 motorcycle. \$895

'71 VW CAMPER. White, clean. \$2495

'72 GRAN TORINO Squire wagon. \$2395

'71 DODGE Colt wagon. \$1179

'69 BUICK Riviera, beige.

'73 FORD F250 Pick-up, green.

HENDERSON FORD

Ann Arbor's Oldest Ford Dealer

3480 Jackson Rd., Ann Arbor

769-7900

OPEN 9 'TIL 9 MON.-FRI.

SATURDAYS, 9-6

FOR RENT—1-bedroom apart-  
ment. No children, no pets.  
Security deposit. 1-474-8552.

## A-1 USED CARS

AT OUR TRIANGLE LOT

M-52 and Old Manchester Road

'74 LTD 2-DR. Loaded with extras	SAVE	'71 PINTO 2-DR. 4-speed	\$ 995
'74 GRAN TORINO 2-DR. Factory air	\$3695	'70 MAVERICK Good transportation	\$ 695
'73 TOYOTA 2-DR. Extra clean	\$2195	'69 FAIRLANE WAGON Only 38,000 miles	\$1095
'73 PLYMOUTH 2-DR. Only 13,000 miles	\$2995	TRUCKS	
'72 MUSTANG MACH I V-8 automatic	\$2395	'73 FORD 3/4 TON V-8, automatic	\$2995
'72 PINTO RUNABOUT Automatic	\$1595	'72 RANGERO V-8, automatic	\$2295
'72 MAVERICK 4-DR. Very clean	\$1995	'71 FORD 1/2 TON V-8, automatic	\$1795
'71 BUICK 2-DR. Factory air	\$2095	'70 RANGERO V-8, automatic	\$1695
		'69 CHEVY 1/2 TON V-8, power steering	\$1195
		'67 FORD 1/2 TON Runs good	\$695

SEE

Geo. Palmer  
Don Moore  
John Popovich

The  
Happyface  
Place  
We're in business  
to make you smile

SEE

Lyla Chriswell  
Bonnie Hayes  
Van Damron

## PALMER

Since April 1912

Open Mon. thru Fri. 9:00 p.m.

All Day Saturday



FORD

New Construction,  
Remodeling, Siding.

475-8750

475-8750

475-8750

475-8750

475-8750

475-8750

475-8750

475-8750

475-8750

475-8750

475-8750

475-8750

475-8750

475-8750

475-8750

475-8750

475-8750

475-8750

475-8750

475-8750

475-8750

475-8750

475-8750

475-8750

475-8750

475-8750

475-8750

475-8750

475-8750

475-8750

475-8750

475-8750

475-8750

475-8750

475-8750

475-8750

475-8750

475-8750

475-8750

475-8750

475-8750

475-8750

475-8750

475-8750

475-8750

475-8750

475-8750

475-8750

475-8750

475-8750

475-8750

475-8750

475-8750

475-8750

475-8750

475-8750

475-8750

475-8750

475-8750

475-8750

475-8750

475-8750

475-8750

475-8750

475-8750

475-8750

475-8750

475-8750

475-8750

475-8750

475-8750

475-8750

475-8750

475-8750

475-8750

475-8750

475-8750

475-8750

475-8750

475-8750

475-8750

475-8750

475-8750

475-8750

475-8750

475-8750

475-8750

475-8750

475-8750

475-8750

475-8750

475-8750

475-8750

475-8750

475-8750

475-8750

475-8750

475-8750

475-8750

475-8750

475-8750

475-8750

475-8750

475-8750

475-8750

475-8750

475-8750

475-8750

475-8750

475-8750

475-8750

475-8750

475-8750

475-8750

475-8750



## Cards of Thanks

### CARD OF THANKS

Many, many thanks to my family and all my friends for their many acts of kindness and the many cards with good wishes while I was in the hospital and since my return home.

Margaret Dietle.

## Legal Notices

STATE OF MICHIGAN  
In the Circuit Court for the County of  
Washtenaw.

File No. 74-1497-10  
EVELYN LAUREL HUETTIG, Plaintiff,  
vs.  
HENRY VICTOR HUETTIG, Defendant.

DIVORCE ACTION  
ORDER TO ANSWER

At a session of said court held on the 24th day of December, 1974, at the Washtenaw County Court House, Ann Arbor, Michigan.

Present: The Honorable William F. Agor, Circuit Judge.

On the 24th day of December, 1974 an action was filed by Evelyn Laurel Huettig, Plaintiff, against Henry Victor Huettig, Defendant, in this court seeking a divorce and restoration of premarital name.

IT IS HEREBY ORDERED, that the Defendant, Henry Victor Huettig, shall answer or take such other action as may be permitted by law on or before the 25th day of February, 1975. Failure to comply with this order will result in a judgment by default against such Defendant for the relief demanded in the Complaint filed in this court.

s/ William F. Agor, Circuit Judge  
Attorneys for Plaintiff  
Jill S. Main Street  
Chelsea, MI 48118  
Tel. (313) 475-8971.

Jan. 2-9-23-25

STATE OF MICHIGAN  
In the Circuit Court for the County of  
Washtenaw.

File No. 74-14861-DM  
ORDER TO ANSWER

PATRICK A. McKILLEN, Plaintiff,  
vs.  
LINDA S. McKILLEN, Defendant.

At a session of said court held in Circuit Court Room No. 2 in the Washtenaw County Building, in the City of Ann Arbor on the 8th day of January, 1975.

Present: Honorable Ross W. Campbell, Circuit Judge.

On the 11th day of December, 1974, an action was filed by Patrick A. McKillen, Plaintiff, against Linda S. McKillen, Defendant, in this court to obtain a divorce.

IT IS HEREBY ORDERED, that the Defendant, Linda S. McKillen, shall answer or take such other action as may be permitted by law on or before the 10th day of March, 1975. Failure to comply with this order will result in a judgment by default against such Defendant for the relief demanded in the Complaint filed in this court.

Ross W. Campbell, Circuit Judge.  
Rademacher & McLaughlin  
By David C. McLaughlin,  
Attorney for Plaintiff.  
True copy  
David C. McLaughlin, Attorney.  
Jan. 16-23-30-Feb. 6

MORTGAGE SALE

Default having been made in the conditions of a certain mortgage made by CHARLES C. LOVREN and OLGA S. LOVREN, his wife, to THE DETROIT BANK AND TRUST COMPANY, a Michigan

banking corporation, dated the 11th day of November, A.D. 1971, and recorded in the office of the Register of Deeds for the County of Washtenaw, State of Michigan, on the 19th day of November, A.D. 1971, Liber 1378 of Washtenaw County Register of Deeds Records, on page 418, in which said mortgage there is contained the provision that in the event of default by said mortgagors, the sum of TWENTY ONE THOUSAND SIX HUNDRED NINETY FIVE and 23/100 (\$21,695.23) Dollars and no suit or proceeding at law or in equity having been instituted to recover the debt secured by said mortgage or any part thereof, now, therefore, by virtue of the power of sale contained in said mortgage and the statute in such case made and provided, notice is hereby given that on Thursday, the 6th day of February, A.D. 1975, at ten o'clock in the forenoon (Local Time) said mortgage will be foreclosed by a sale at public sale to the highest bidder immediately inside the westerly entrance to the Washtenaw County Building, City of Ann Arbor, Washtenaw County, Michigan (that being the building in which the Circuit Court for the County of Washtenaw is held), of the premises described in said mortgage, or so much thereof as may be necessary to pay the amount due on said mortgage as aforesaid, with interest thereon at 7 1/2% and all legal costs, charges and expenses, including the attorney fee allowed by law, and any sum or sums which may be paid by the undersigned at or before said sale for taxes and/or insurance on said premises, which premises are described as follows: Lands, premises and property situated in the Township of Superior, Washtenaw County, Michigan, described as:

Beginning at the East 1/4 corner of Section 6, Town 2 South, Range 7 East, Superior Township, Washtenaw County, Michigan, there being along the centerline of Vorhies Road and the East line of said section; thence South 89°07'20" West 220.00 feet; thence North 89°07'20" East 650.00 feet along the East and West 1/2 line of said Section 6, Range 7 East, Township of Superior, Washtenaw County, Michigan, together with the hereditaments and appurtenances thereof. The length of the redemption period is six (6) months from the date of such sale.

Dated: January 2, 1975.  
THE DETROIT BANK AND TRUST COMPANY, Mortgagee  
Miller, Campbell, Fackour & Stone  
Attorneys for Mortgagee  
218 Wabash Building  
Birmingham, Michigan 48011.

Jan. 2-9-16-23-30

Former Clerk  
Charged With  
Embezzlement

Harry Peters, former Dexter village clerk, was arraigned in Chelsea branch of 14th District Court Wednesday morning, Jan. 15, on felony charges of embezzlement over \$100, according to County Prosecutor William S. Delhey.

A warrant was issued by the prosecutor's office on Monday, Jan. 13. Peters surrendered himself to the Ypsilanti State Police Post Wednesday morning.

A maximum penalty on the embezzlement charges is 10 years and/or \$5,000, according to Delhey.

After a preliminary examination, Peters will appear in Circuit Court in Ann Arbor. Trial could take place in three to six months, according to Delhey.

Brian Urquhardt is attorney for Peters.

Peters resigned from office on Nov. 11, after a Michigan State Treasury Department audit uncovered shortages of more than \$14,000 in the Sewer, Water, and Refuse Fund. The investigation was instigated at the insistence of Village President Dorothy Hunawill.

One effective way citizens can help combat the growing problem of noise pollution is by insisting upon the control of noise levels in industry, on highways, on mass transit systems, and in recreational pursuits, according to hearing specialists.

### CUSTOM

## BUMPING and PAINTING

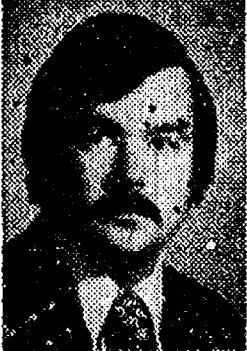
FREE ESTIMATES - ALL MAKES

Get the Best for Less!

## FRANK GROHS CHEVROLET

Phone 426-4677

Dexter, Mich.



BOB MYRMEL

Manager

EVE 428-3356

### WANTED

3-bedroom home, in or near town, up to \$50,000. Possession by Feb. 10, 1975. Preferred customer. We have their home sold.

Real Estate One.  
OF WASHTENAW

REALTORS

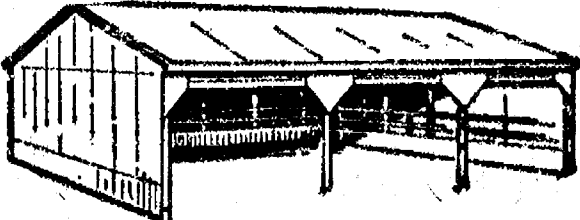
1196 M-52, Chelsea 475-8693

## POLE BUILDINGS

GO UP EASILY... ECONOMICALLY

ANY TYPE - ANY STYLE - ANY SIZE  
Residential - Agriculture - Commercial

PROMPT CONSTRUCTION DATES  
Low prices and high quality workmanship.



## OWEN CUSTOM BUILDERS

LICENSED & INSURED - MANY SATISFIED CUSTOMERS

JACKSON (517) 769-2669



COMPOSER-ARRANGER DAVE SPORNY rehearses the Studio (Jazz) Orchestra of the Interlochen Arts Academy in preparation for the benefit concert for the Dexter Schools Bands to be held in Dexter High school auditorium, Thursday, Jan. 16 at 7:30 p.m. Tickets for the contemporary and classical jazz program may be purchased at the door.

be held in Dexter High school auditorium, Thursday, Jan. 16 at 7:30 p.m. Tickets for the contemporary and classical jazz program may be purchased at the door.

# Concert Benefits Dexter Bands

Tonight's Jazz Concert at Dexter High school auditorium is the first of several fund-raising events by the Dexter Band Boosters to raise monies for band uniforms and equipment for the Dexter music program. More than 400 Dexter students are involved in the

music and band programs at the schools.

Tickets are available at the door.

At the 7:30 p.m. concert, several popular numbers will entertain the audience, including Leon Harper's "Skin Tones," Sam Nestico's "Another Lazy Day," Bill Hol-

man's "Quick Step," and conductor Dave Sporny's arrangement of "Hello Dolly." The 23-member jazz orchestra will present a full program of contemporary and classical jazz numbers.

The Studio Jazz Orchestra of the Interlochen Arts Academy has performed at jazz festivals on college

campuses including Notre Dame and Michigan State. Their present tour is being funded by the Michigan Council for the Arts.

Dexter's music and band program is headed by Warren McArthur, music director, and Gerald Woolfolk, assistant music director.

### SEC ROUND-UP:

## Milan Dumps Chelsea Bulldogs To Retain Conference Lead

Milan remained undefeated Friday night by burying Chelsea, 84-41, but second-place Saline kept pace with the league leader by dumping Brighton, 85-67. Chelsea's defeat dropped the Bulldogs into third place with a 4-2 record.

Milan 84, Chelsea 41--

Milan worked the press to perfection Friday night, forcing the Bulldogs into nearly 40 turnovers that helped along the Big Red's 43 point edge.

Leading scorer for the winners

speeding and was fined \$23.

Robert Morrison pled guilty to possession of open intoxicants in a motor vehicle and was fined \$50.

Roger J. Miller pled guilty to improper plates and was fined \$21.

Michael Markiewicz pled guilty to speeding and was fined \$25.

David Berry pled guilty to drunk and disorderly and was fined \$35.

Michael J. Devine was found guilty of driving without due care and caution and was fined \$21.

Albert Marshall pled guilty to driving without an operator's permit and was fined \$50. He pled guilty to speeding and was fined \$31.

Randy Shaver pled guilty to failure to stop and report a personal injury accident and was fined \$35.

Patricia Eby pled guilty to careless driving and was fined \$34.

Max Reynolds pled guilty to speeding and was fined \$31.

Thomas Milbocher was found guilty of speeding and was fined \$21.

Bruce D. Burns was found guilty of speeding and was fined \$21.

Larry Stanley pled guilty to drunk and disorderly and was fined \$25.

Peter Kaluch was found guilty of careless driving and was fined \$34.

Robert Wilcox and Ernest R. Smith were bound over to circuit court for arraignment Jan. 31 on charges of breaking and entering.

Patrick Spangler pled guilty to drunk and disorderly and was fined \$50.

James Losee, on charges of impaired driving and use of marijuana, was fined \$200, placed on one year probation, and ordered to participate in the Alcohol Safety Action Program. \$125 of fines and costs is to be paid.

Robert Bott pled guilty to driving under the influence of liquor and will be sentenced Feb. 20.

Kenneth L. James was found guilty of possession of LSD and will be sentenced Feb. 13.

Mark Walton pled guilty to defective equipment. The charge was dismissed on \$6 costs. He pled guilty to allowing an unlicensed person to drive and was fined \$25.

Reginald Ross pled guilty to driving with a suspended license and was fined \$50 and sentenced to three days in jail, to be suspended.

Gary Nostos pled guilty to defective equipment. The charge was dismissed on \$6 costs.

James L. Byrd waived examination on a charge of breaking and entering and was bound over to circuit court for arraignment Jan. 17.

Mark A. Wilson waived examination and was bound over to circuit court for arraignment Jan. 17 on a charge of breaking and entering.

Rodney Abdon pled guilty to speeding and was fined \$27.

was Stan Joplin, who hit for 23 points for the SEC leaders, and Jim Dutton, who scored 20.

Chelsea's leading scorer was Gary Wonders with a meager nine points.

Saline 85, Brighton 67--

Saline moved into sole possession of second place, a position it had previously shared with Chelsea, by taking full advantage of the Bulldogs' anemic shooting in the third quarter.

Saline, leading by six at inter-

mission, stretched their lead to the size of the winning margin in the third, when Brighton hit only three-for-20 from the floor.

High Hornet scorer in the contest was Dan Scotton, who was good for 22 points, while Tim Slesky added 21 and chalked up 18 rebounds.

Bulldogs were paced by Scott Bandkau's 20 points, while Steve Golden added 15 counters and Neil Larson, 10.

Dexter 67, South Lyon 53--

Dexter climbed to fifth place Friday night by recording their second victory of the season and watched Brighton fall to Saline.

Rebounds told the story for the Dreadnaughts, as they outrebounded the lowly Lions, 21-9, in the third period, after South Lyon had edged ahead with a two-point half-time lead.

Mark Vail paced Dexter's rebounding effort and also lead the scoring for the winners with 13 points. Mark Mast and Doug Gross were each good for 12 points.

On the losing side, Ed Hock hit for 16 Lion points to lead the team.

Novi 61, Lincoln 59--

Pat McAllen put the trailing Wildcats over the top in the final seconds of their contest with Lincoln by stealing the ball and then hitting for a layup that produced the final tally.

Top scorer for the Wildcats was Bill Giorgio, who was good for 21 points, while Andy McComas was good for 14 and McAllen for 10.

Leading point production for Lincoln was Keith Parks with 13 points.

SOUTHEASTERN CONFERENCE

Standings as of Jan. 10

	W	L
Milan	6	0
Saline	5	1
Chelsea	4	2
Lincoln	3	3
Novi	3	3
Dexter	2	4
Brighton	2	4
South Lyon	0	6

# \$2,900<sup>00</sup> DOWN

\$269.55 Principal and Int. per mo.

MOVES YOU IN THIS

## NEW HOME

1 MILE FROM CHELSEA

WITH

- ★ 3 BEDROOMS
- ★ 1 1/2 BATHS
- ★ FULL BASEMENT
- ★ INSULATED GLASS
- ★ LARGE FAMILY KITCHEN
- ★ ALL-ALUMINUM EXTERIOR
- ★ CARPET and APPLIANCES

CALL TODAY!

## WEBER HOMES

475-2828 or 475-9258

# -NOTICE-

## Sylvan Township Taxpayers

Sylvan Township Treasurer will be at Sylvan Township Hall, 112 W. Middle St., Chelsea, to collect Sylvan Township Taxes every Wednesday and Friday from 1 to 5 p.m. and Saturdays from 10 a.m. to 3 p.m., until Feb. 28, 1975.

CHECKS WILL BE ACCEPTED BY MAIL

All Dog Licenses must be paid to Sylvan Township Treasurer before March 1, 1975, to avoid penalty.

ALL DOG LICENSES \$4.00

Rabies Vaccination papers must be presented in order to obtain license.

## FRED W. PEARSALL

SYLVAN TOWNSHIP TREASURER

Phone 475-7251

Read The Standard Ads for Regular Bargains!

# NOTICE

## DEXTER TOWNSHIP TAXPAYERS

I will be at Dexter Township Hall, 6880 Dexter-Pinckney Rd., Dexter, to collect Dexter Township taxes on the following days: every Monday evening, 5 to 7 p.m.; Wednesday afternoons, 12 noon to 5 p.m., and Friday, 9 a.m. to 5 p.m. through February 28.

Those who wish may send check or money order. Receipts will be returned by mail. Three percent collection fee is assessed after Feb. 15.

All dog licenses must be paid to the Dexter Township treasurer before March 1, 1975 to avoid penalty.

ALL DOG LICENSES \$4.00

Rabies vaccination papers must be presented in order to obtain dog licenses.

## LORINDA JEDELE

DEXTER TOWNSHIP TREASURER

## Lima Township Taxpayers

# NOTICE

I will be at Chelsea State Bank to collect Lima Township taxes on the following Fridays: Dec. 27, Jan. 10 - 24, Feb. 7 - 21 - 28 from 9:30 to 11:45 a.m. and 1:00 to 5:00 p.m. Those who wish may send check or money order. Receipt will be returned by mail.

All Dog Licenses must be paid to Lima Township Treasurer before March 1, 1975, to avoid penalty.

ALL DOG LICENSES \$4.00

Rabies Vaccination Papers must be presented in order to obtain dog license.

## HILDA PIERCE

LIMA TOWNSHIP TREASURER

Faster gains from better FEEDS

Calves get growing and gaining faster, on our balanced, fortified Calf Feed... enriched with needed vitamins, minerals.

Complete feeding rations for all your livestock, poultry.

**FARMERS' SUPPLY CO.**

PHONE 475-1777

Complete feeding rations for all your livestock, poultry.





# BOWLING NEWS

## Chelsea Lanes Mixed

Standings as of Jan. 10

	W	L
Bushwackers	84	49
Mark IV Lounge	83	50
Gerry Rushing's Service	81	52
Adamson & Henson	81	52
Doug's Painting	79	54
The Hopetuls	75	59
Marsh & Verwey	71	62
Sannocks	71	62
Torricio & Rawson	68	65
Bollinger's	67	66
Federal Screw Outlaws	65	68
Hook Line & Stinkers	62	71
The Pinheads	61	72
Ann Arbor Centerless	58	75
Bable & Silcox	51	82
Bak's Fifth Avenue	48	85
Willy & The We's	47	86
Mort's Custom Shop	45	88

Women, 150 games or better: L. Alexander, 153, 201; I. Thibault, 158; B. Wisniewski, 187; D. Neuman, 182; E. Silcox, 161, 174, 169; J. Norris, 184, 159, 153; R. Harook, 167, 203, 157; H. Scriptor, 152, 154; J. Stoll, 154; D. Keezer, 167; E. Packard, 152, 150; A. Rawson, 153; B. Torricio, 190; B. Mareh, 150; K. Wheeling, 168; T. Steinaway, 168; M. Henson, 177; D. Cozzens, 174.

Men, 200 games or better: D. Williams, 201; A. Sannes, 200; T. Lewis, 223; M. Zink, 201; W. Cozzens, 208.

Men, 500 series or better: D. Alexander, 503; G. Popp, 512; T. Wisniewski, 505; J. Norris, 505; A. Sannes, 541; D. Bolanowski, 514; J. Torricio, 505; J. Verwey, 521; T. Lewis, 510; W. Cozzens, 502.

## Hi-Point Mixed League

Standings as of Jan. 7

	W	L
Hit & Missers	357	
Heavy Traffic	349	
Dexter Gear & Spine	348	
New Breed	342	
Trouble Shooters	341	
Flat Tires	337	
Alley Runners	336	
River Rats	324	
Ding A Lings	310	
4 D's	303	
Faber Fabrics	273	
Pres.	268	

Women, high game, 150 and over: D. Dettling, 153; S. Sutor, 159; B. McGuire, 155; P. Patterson, 150; E. Harmon, 151; L. Clark, 162; D. Hansen, 173; C. Fox, 153; P. Scherdt, 152; C. Klappierich, 151; M. Cox, 158; G. DeSmith, 184; M. Paul, 167, 171.

Men, high game, 425 and over: M. Paul, 474; E. Harmon, 434.

Men, high game, 160 and over: D. Carpenter, 197, 194, 160; W. Teachworth, 169; W. Beuerle, 182; G. Cook, 166, 180; R. Camper, 179; F. Palacios, 175.

Men, high series, 460 and over: D. Carpenter, 551; F. Palacios, 464; W. Beuerle, 488; G. Cook, 494; R. Camper, 490.

## Sunday Night Leftovers

Standings as of Jan. 12

	W	L
--	---	---

Mix-Ups	24	12
---------	----	----

Strike-Outs	24	12
-------------	----	----

Tavabag	23	13
---------	----	----

Shackers	21	15
----------	----	----

Neighbors	21	15
-----------	----	----

Recyclers	19	17
-----------	----	----

Electricians	19	17
--------------	----	----

Edwards Const.	17	19
----------------	----	----

Bullets	16	20
---------	----	----

Four & One	12	24
------------	----	----

Misfits	11	25
---------	----	----

Strangers	9	27
-----------	---	----

Men, over 200: D. Simerson, 244.		
----------------------------------	--	--

Men, over 500: D. Simerson, 544; T. Yarger, 509.		
--	--	--

Women, over 450: S. Bowen, 519.		
---------------------------------	--	--

Women, over 180: S. Bowen, 201.		
---------------------------------	--	--

## Chelsea Women's Bowling Club

Standings as of Jan. 8

	W	L
Jiffy Mixes	50	13
Palmer Ford	41 1/2	28 1/2
Parish's Cleaners	40	28
Washtenaw Engineering	40	28
Wolverine Bar	40	28
Chelsea Milling	37	31
Norris Electric	37	31
Thompson's Pizza	34 1/2	33 1/2
Jorm's Barber Shop	34 1/2	33 1/2
Rushing's Temp. Help	31 1/2	36 1/2
Mark IV Lounge	31	37
Chelsea Grinding	30	38
Larry's Roadside Market	30	38
Lloyd Bridges Chevrolet	30	38
Jenny's Mobil	29	39
Joe & Judy's	29	39
Leidlauff's	28	40
Klink Excavating	19	49

400 series or over: P. Poertner, 115; S. Klink, 513; P. Wilson, 512; D. Eisenbeler, 478; M. E. Sutter, 487; L. Alexander, 453; B. Fritz, 462; D. Judson, 483; D. Verwey, 174; J. Norris, 468; R. Whitaker, 188; E. Orlovski, 486; R. Hummel, 192; P. Wurster, 495; N. Kern, 464; J. Rowe, 460.

150 games and over: J. Schlee, 156; D. Eisenbeler, 173, 186; M. E. Sutter, 203, 160; L. Alexander, 162, 154; D. Alber, 165; B. Fritz, 163; A. Sindlinger, 159; P. Fitzsimmons, 168; P. Poertner, 207, 161; P. Wilson, 155, 179; R. Lutovsky, 155; S. Ringe, 162, 152; J. Fouty, 151, 157; D. Sweet, 166; D. Judson, 200, 158; M. McGuire, 158; D. Rosentreter, 170; D. Verwey, 151, 181; B. Gross, 154; M. Powell, 153; C. Powell, 183; D. Norris, 163; P. Norris, 150; L. Hafner, 173, 152; B. Stahl, 153; J. Norris, 214; A. Judson, 158; R. Whitaker, 172; S. Klink, 166, 200; D. Frisbie, 162, 150; L. Orlovski, 161, 182; D. Fouty, 155; R. Hummel, 170, 157, 165; A. Eisele, 152; P. Wurster, 184, 166; N. Kern, 175, 154; J. Cook, 156; J. Cronkite, 187; B. Bush, 155, 151; A. Fahrner, 157; J. Rowe, 169; N. Packard, 166, 150; B. Larson, 158; C. Bradbury, 191; S. McCalla, 178; K. McCalla, 173, 154; E. Kuhl, 161; B. Fike, 164; J. Panfil, 169; G. Klink, 154, 159.

## Junior House League

Standings as of Jan. 9

	W	L
Chelsea Lanes	92	34
Mark IV Lounge	82	44
Wolverine II	81	45
Frank Grohs Chevy Body	74	52
Dana Demons	71	55
Mac Tools	69	57
Trading Post	68	58
Smith's AAA	64	62
Dell's Paints	64	62
Dana Maint.	62	64
Kitty Mix	60	66
Doug's Painting	60	66
Rockwell International	59 1/2	68 1/2
Washtenaw Engineering	59	67
Boy's Automotive	56	70
3-D Sales & Service	53 1/2	72 1/2
IPSCO	52	74
Slocum Const. & Building	27	99

600 series: T. Dittmar, 603; L. Salver, 602.

525 or over: N. Fahrner, 564; J. Eder, 550; P. Kelly, 532; G. Beeman, 543; A. Fletcher, 580; D. Allen, 597; J. Toma, 539; R. Westcott, 531; E. Greenleaf, 539; T. Steele, 540; D. White, 530; F. Northrop, 527; R. Erskine, 571; R. Semark, 554; L. Fahrner, 570; G. Cotton, 552; R. V. Worden, 544; A. Fleischmann, 527; M. Ford, 551; G. Hamilton, 576; W. Bauer, 530; F. Boyer, 555; S. Gaspar, 549; R. Nix, 550; E. Marshall, 529; J. Patterson, 526; M. Smith, 553; P. Fletcher, 550.

210 or over: N. Fahrner, 216; T. Dittmar, 212; D. Allen, 212; L. Salver, 210; E. Greenleaf, 223; R. Erskine, 225; R. V. Worden, 212; A. Fleischmann, 231; G. Hamilton, 210; E. Marshall, 223.

## Chelsea Suburban

Standings as of Jan. 8

	W	L
Chelsea Drug	72	47
Dairy Queen	70	49
Dancer's	70	49
Frisinger Realty	66	53
Dana Corp.	59	60
State Farm	59	60
Chelsea State Bank	59	60
Foor Mobil	58	61
Cavanaugh Lk. Store	57	62
Chelsea Assoc. Builders	54	65
Mark IV Lounge	47	72
Waterloo Garage	43	76

150 games and over: F. Cole, 160, 172, 180; B. Dittmar, 69; E. Figg, 169; F. Fredrick, 154, 153; T. Monroe, 157; M. Bollinger, 178; J. Stoll, 167; B. Hafley, 154, 160; B. Fike, 158, 156; R. West, 166, 162, 154; R. McGibney, 177, 156; K. Chapman, 170; J. Huston, 170, 150; G. DeSmith, 170, 179; P. Elliott, 182; J. Burnett, 154, 161; N. Collins, 169; C. Peterson, 159; M. DeLaTorre, 158; J. Kipfmiller, 173; A. Hocking, 162; C. Stoffer, 153; R. Musbach, 150, 150, 156; S. Bowen, 168; P. Harook, 173, 150, 160; V. Stewart, 165, 163; S. Hafner, 173, 150; E. Schulz, 169; N. Packard, 167, 170, 153; L. Jarvis, 153; J. Buku, 150, 182; A. Bohne, 169, 165; B. Beeman, 162; L. Beeman, 180; G. Baczynski, 172.

425 series and over: F. Cole, 512; R. McGibney, 502; B. Hafley, 459; R. West, 462; J. Huston, 457; K. Chapman, 493; F. Fredrick, 428; P. Elliott, 467; J. Burnett, 462; N. Collins, 438; M. DeLaTorre, 428; C. Stoffer, 428; R. Musbach, 428; P. Harook, 488; V. Stewart, 461; S. Hafner, 439; M. Usher, 428; N. Packard, 493; L. Jarvis, 426; J. Buku, 459; A. Bohne, 456; L. Beeman, 466; G. Baczynski, 444.

## Unknowns League

Standings as of Jan. 8

	W	L
Willows	44	28
Banana Splits	38 1/2	33 1/2
Doubtless Five	38	34
The Streakers	36 1/2	35 1/2
Fascinating "5"	30	42
So-Close	29	43

Team high series: The Streakers, 2,276.

Team high game: So-Close, 802.

Ind. high series: S. Steele, 465.

Ind. high game: P. Wirth, 187.

400 and over series: P. Wirth, 440; B. Tison, 406; S. Steele, 465; A. White, 403; K. Greenleaf, 417; M. Lancaster, 407; J. Murphy, 450; G. Dickelman, 413.

140 and over games: P. Wirth, 187; S. Parker, 147; B. Tison, 159; S. Steele, 174, 154; A. White, 163; K. Greenleaf, 147; M. Lancaster, 148, 148; J. Murphy, 150, 164; G. Dickelman, 142; P. Ball, 144.

## Junior Swingers

Standings as of Jan. 11

	W	L
Rods III	55	21
Pros	54	22
Hot Tamales	52	24
Pin Swipers	49 1/2	26 1/2
Buzz	44	32
Born Losers	37	39
Pin Smokers	33 1/2	42 1/2
Star Strikers	32	44
Lima Center 5	29	47
Y.B.A. Scorers	29	47
Hot Shots	24	52
Chelsea All Stars	21	55

Girls, games over 120: B. Roy, 128; K. Fairbanks, 173, 159; D. Alexander, 139, 164, 132; K. Milliken, 144, 121; C. Goins, 141; D. Wilson, 160; R. Alexander, 155; K. Tobin, 141, 188, 153; M. Fahrner, 183, 136, 134; C. Collins, 160, 147; S. Schulze, 166, 130; D. Packard, 132, 137, 144.

Girls, series over 350: K. Fairbanks, 450; D. Alexander, 435; K. Milliken, 371; D. Wilson, 359; K. Tobin, 480; M. Fahrner, 453; C. Collins, 418; S. Schulze, 398; D. Packard, 413.

Boys, games over 150: G. Packard, 152, 160, 178; M. Burnett, 187,

# SPORTS CORNER



KANSAS CITY ROYALS ACQUIRED STARTING PITCHER WITH A WINTER TRADE THAT BROUGHT THEM

## Nelson Briles

— 30 YEAR OLD NATIVE OF DORRIS, CALIF. WAS THE WINNINGST HURLER ON PITTSBURG STAFF WITH A 14-13 RECORD. HE BROKE INTO THE MAJORS IN 1965 WITH CARDINALS— AND FASHIONED A TWO-HIT SHUTOUT IN THE 3rd GAME OF THE '71 WORLD SERIES.

LAST SEASON HE APPEARED IN 33 GAMES, PITCHED 219 INNINGS, STRUCK OUT 94, HAD 2.84 EARNED RUN AVERAGE.

KANSAS CITY FANS WERE UNHAPPY WHEN LOU PINIELLA AND ED KIRKPATRICK WERE TRADED TO THE PIRATES, BUT BRILES' PITCHING COULD CHANGE THAT.

192: C. Sannes, 191, 197, 187; M. Schnaidt, 160, 198; S. Lyerla, 152; M. Foster, 216, 166; D. Messner, 222, 198; D. Alber, 165, 197; J. Bullock, 158, 150; J. Push, 179; Dean Thompson, 179, 151; J. Sweet, 168; Dennis Thompson, 154; R. Weiner, 188, 187; A. Clark, 159; T. Marsh, 156, 172; T. Edick, 158.

## Rolling Pin League

Standings as of Jan. 14

	W	L
Egg Beaters	50	18
Coffee Cups	48	20
Spooners	41	27
Moppper Uppers	40	28
Brooms	36	32
Blenders	34 1/2	33 1/2
Mixers	34	34
Poachers	33 1/2	34 1/2
Pots	32	36
Jolly Mops	31	37
Sugar Bowls	30	38
Kitchen Kapers	30	38
Grinders	28	40
Dish Rags	28	40
Kookie Kutters	27 1/2	40 1/2
Beaters	20 1/2	47 1/2

425 and over series: S. Ringe, 465; E. Williams, 501; E. Neibauer, 441; M. Vasas, 480; P. Harook, 457; M. Meyers, 452; B. Torricio, 444; A. Rawson, 460; N. Hill, 467; P. Wurster, 473; K. Harris, 428; J. Buku, 438; S. Bowen, 452; L. Northrop, 492; G. Clark, 481; C. Shepherd, 474; R. Foster, 456; J. Shepherd, 460.

150 and over games: S. Ringe, 150, 190; J. Edick, 150; M. Eeles, 159; J. Tobin, 162; E. Williams, 218, 162; P. Smith, 153; H. Karns, 180; E. Neibauer, 157, 161; M. Vasas, 179, 179; G. Duhamel, 154; P. Harook, 173, 160; M. Meyers, 176; B. Torricio, 171; A. Rawson, 169, 153; D. Dirlam, 170, 151; R. Cook, 161; N. Hill, 173, 152; R. Musbach, 163; M. Wojcik, 154; P. Wurster, 167, 163; K. Harris, 163; J. Buku, 185, 169; A. Hadley, 153; S. Bowen, 168; L. Northrop, 163, 190; J. Jarvis, 184; D. Cook, 167; G. Clark, 151, 169, 161; C. Shepherd, 159, 175; R. Foster, 204; J. Shepherd, 150, 172.

## Leisure Time League

Standings as of Jan. 9

	W	L
Slowpokes	46 1/2	25 1/2
Unpredictables	45 1/2	26 1/2
Crackpots	40	32
Misfits	39 1/2	32 1/2
Highly Hopefuls	38	33
Roadrunners	38	34
Pooh Bears	38	34
Lady Bugs	37 1/2	34 1/2
Four Stooges	34 1/2	37 1/2
The Lakers	33	39
Sugar Loaders	24	48
Rug Rats	16 1/2	55 1/2

400 series: E. Williams, 403; D. Dault, 458; J. Stapish, 414; J. Johnson, 402; V. Wheaton, 421; E. Swanson, 437; D. Hafner, 464; B. Mull, 454; E. Haydock, 432; Shirley Friday, 436; M. O'Donnell, 477; M. Miller, 464.

140 or better games: J. Doolin, 150; E. Williams, 169; L. Haller, 142, 148; D. Dault, 163, 159; P. Wirth, 141; S. Whitesall, 168; S. Nagel, 163; S. Centilli, 157; R. Musbach, 142; J. Stapish, 160, 157; J. Johnson, 168; G. Reed, 141; D. Thompson, 147, 140; V. Wheaton, 141, 153; P. Sands, 149; E. Swanson, 164, 147; D. Hafner, 182, 140; B. Mull, 147, 191; E. Haydock, 145; S. Thirkow, 146; J. Anderson, 158; Shirley Friday, 184, 144; M. Maier, 156; M. O'Donnell, 174, 171; M. Miller, 176, 157.

## Chelsea Nite Owl League

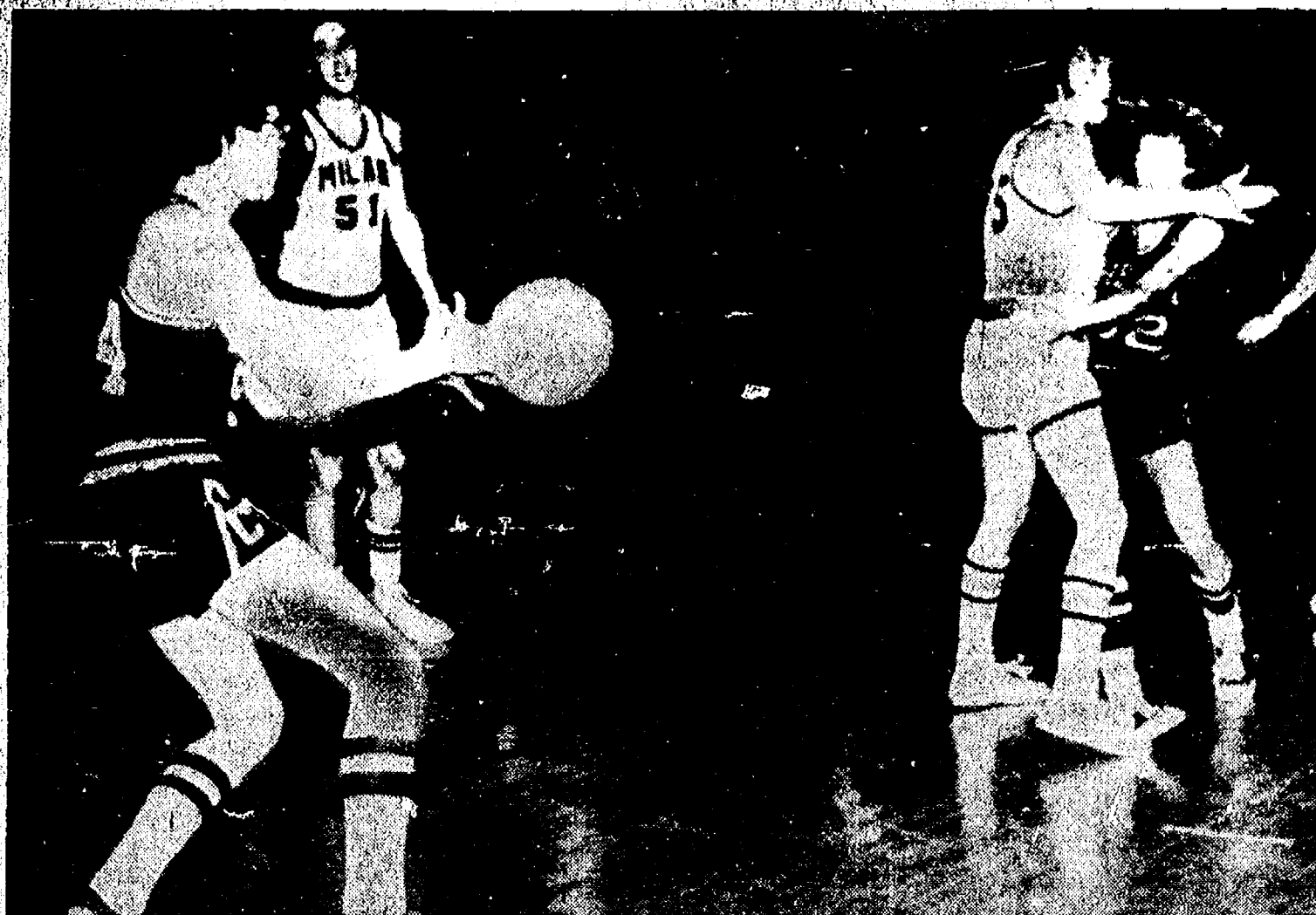
Standings as of Jan. 13

	W	L
McCalla Mobile Feeds	49	27
Dault & LeVan	48	28
Southern Boy	48 1/2	29 1/2
Steele's Heating	45	31
Norm's Body Shop	45	31
Cavanaugh Lake Store	41 1/2	36 1/2
Fitzsimmons Excavating	40	36
Hanco Sports Center	39 1/2	36 1/2
Wahl's Oil	38 1/2	37 1/2
Sherlock Homes	37 1/2	38 1/2
Bollinger's Sanitation	35 1/2	40 1/2
Ted's Standard	32	44
Red's Standard	31	45
Chelsea Finance	29	47
Lopez Builders	26	50
Team No. 2	24	52

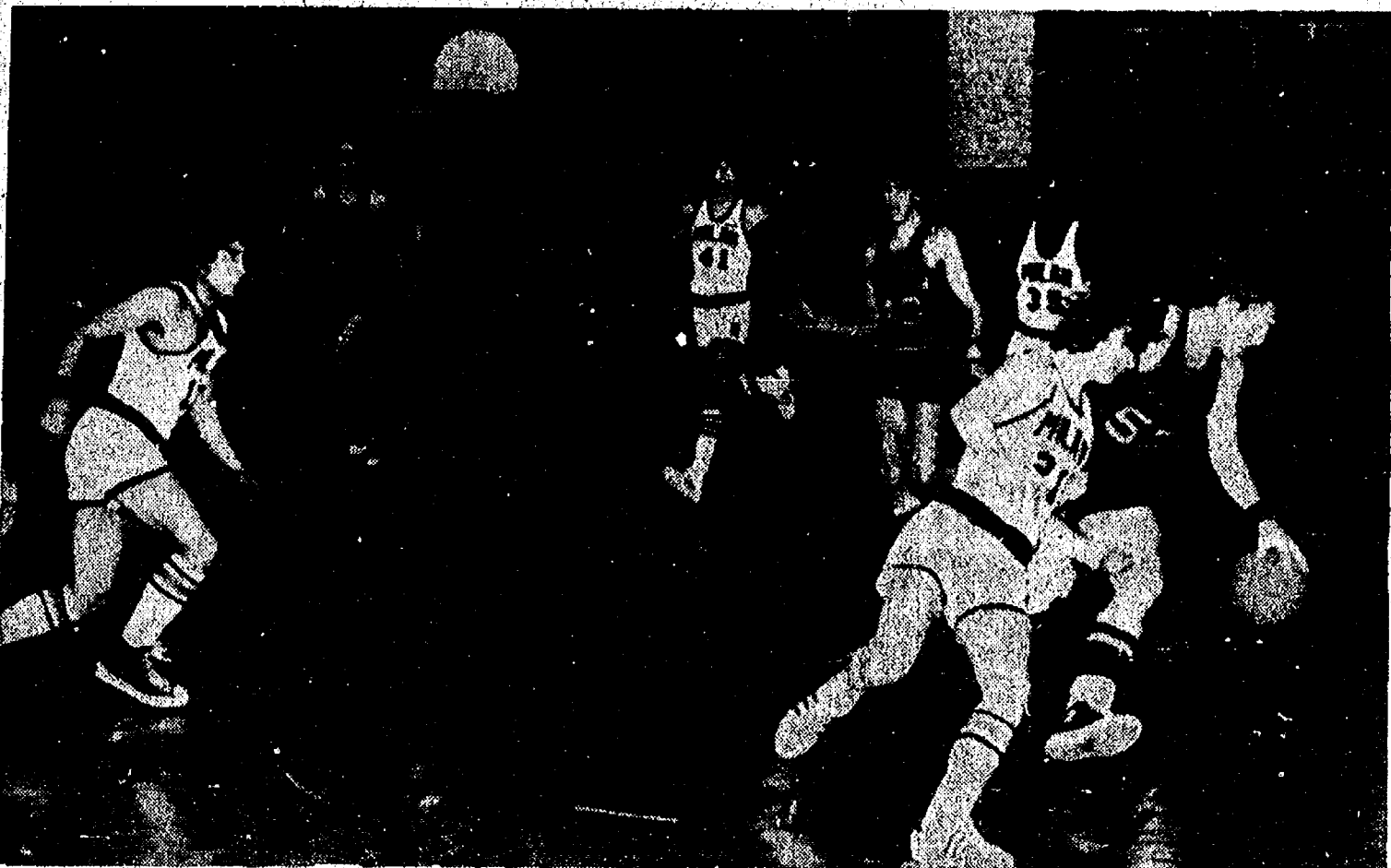
200 games and over: G. Beeman, 202; T. Steele, 205; T. Mead, 210; C. Young, 222; J. Dault, 203; S. Weber, 212; R. Smith, 200; H. McCalla, 214; E. Buku, 234; J. Richmond, 202; R. Nix, 202, 201.

500 series and over: G. Beeman, 539; T. Steele, 583; T. Mead, 511; F. Barkley, 501; C. Young, 566; J. Dault, 528; S. Weber, 522; R. V. Worden, 520; J. Elliott, 519; J. Yelsik, 503





A QUICK PASS to Rick Robbins (54) provides a way out for Tom Hafer (32) while a surprised Big Red player reacts to the play. Despite moments of encouraging play, Chelsea was soundly dumped by Milan and fell to third place in the Southeastern Conference.



JACK HACKWORTH (52) who recently returned to the Bulldog cage line-up after missing the first portion of the season due to a football injury, was one of the few bright spots in Friday night's loss to Milan. Coach Tom Balistrere reported himself pleased with Hackworth's returning strength and steady play in the game, only his second of the season. At left are Rick Sweeney (22) and Dave Alber (40).

## Brown Drug, IPSCO Undefeated To Lead Recreation Cage Race

IPSCO and A. W. Brown Drug have taken over the lead in men's recreation basketball with identical 2-0 records in the second week of play.

In Monday night's contest, both teams recorded their second victories. IPSCO shot down 3-D Sales by an incredible 65-19 margin. High scorers for IPSCO were Jim Cameron with 15, Farley with 13, and Davis with 12. No one hit for double figures for 3-D.

A. W. Brown Drug dropped Chelsea State Bank by a less substantial margin, 45-36. Topping Brown Drug's scorers were Myers with 11, and Chrisinske with 10. Chelsea State Bank was paced by Leonard's 10 points.

Dexter Rabble handed D & D Lanes its second defeat of the young season, 61-45. Kinaschak topped all scorers for Dexter Rabble with 21 points, aided by

Crocker with 15. Owen's 20 points led the way for D & D.

In last Wednesday's games, Pinckney Independents took their first win in their opening game 61-48 over Mark IV Lounge. Leading independent scorers were Trumble with 17 points, Bishop with 16, and Douglas with 15. Risher tallied 12 points for Mark IV.

Chelsea Lumber downed Dunlavy Farms, 59-49, in the opening game for both teams. Chelsea Lumber was led by Lande with 22 points, and Garrett with 19. Dunlavy's top point men were Clark with 15 counters and Koch with 14.

Heydlauff's dumped Rockwell International, 65-42, led by Miller's 22 points. Riemenschneider added 12 for the winners. For Rockwell International, Nash hit for 19 and Patrick for 11.

### MEN'S RECREATION BASKETBALL

Scores of Jan. 8 and 13

Wednesday, Jan. 8—  
Pinckney Independents 61, Mark IV Lounge 48.  
Chelsea Lumber 59, Dunlavy Farms 49.  
Heydlauff's 65, Rockwell International 42.

Monday, Jan. 13—  
A. W. Brown Drug 45, Chelsea State Bank 36.  
Dexter Rabble 61, D & D Lanes 45.  
IPSCO 65, 3-D Sales 19.

### MEN'S RECREATION BASKETBALL

Standings as of Jan. 13

	W	L
IPSCO	2	0
A. W. Brown Drug	2	0
Independents	1	0
Chelsea Lumber	1	0
Heydlauff's	1	0
Chelsea State Bank	1	1
Dexter Rabble	1	1
S. Boy Take-Out	0	1
Rockwell International	0	1
Dunlavy Farms	0	1
Mark IV Lounge	0	1
3-D Sales	0	1
D & D Lanes	0	2

### RECREATION BASKETBALL SCHEDULE

Games Jan. 16-23

Thursday, Jan. 16—  
Chelsea State Bank vs. 3-D Sales.  
Southern Boy Take-Out vs. IPSCO.  
Rockwell International vs. Mark IV Lounge.

Monday, Jan. 20—  
Dunlavy Farms vs. Rockwell International.  
Mark IV Lounge vs. Chelsea Lumber.

A. W. Brown Drug vs. Pinckney Independents.

Wednesday, Jan. 22—  
Dexter Rabble vs. Southern Boy Take-Out.

IPSCO vs. Chelsea State Bank.  
3-D Sales vs. D & D Lanes.

### Varsity Debaters

Break Even in

Ann Arbor Tourney

Chelsea varsity debaters recorded a mediocre 4-4 afternoon Saturday at the Gold Cup Tournament in Ann Arbor.

Debating for the squad were Brenda Shadoan and Keith Cockerline, affirmative, and Kurt Allhouse and Brad Glazier, negative.

This Saturday, Jan. 18, Chelsea's varsity will compete in the varsity district tournament at Warren Cousino High school in Warren.

JOE ADAIR

## Cub Scouts

DEN 1, PACK 415—

Den 1 had its first meeting Thursday, Jan. 9. We opened the meeting with the Cub Scout promise. We chose James Pearson as denner and Kevin Colombo as assistant denner. We made covers for our chairs out of paper bags. And we did some push-ups. Next den meeting, we are going to trace patterns for our trophy boards. Jack brought

Kevin Colombo, scribe.

## Kiwanis Travel Film Saturday Entitled 'All About England'

This Saturday evening's Kiwanis Club Travel and Adventure Series feature will be "All About England," a film by Joe Adair. In traveling "all about England," the audience will see "England and the English at their best," including bobbies and double-decker buses, Piccadilly and Penzance, Salisbury and Canterbury, history and hilarity, sailing ships and Shakespeare, London upon the Thames, the English Riviera, the seas that cradle this island realm, the men who sail upon them, artisan and the crafts they play, towering cliffs and the birds that mock them, Robin Hood and Nottingham, the wonder of Windsor, the lake district and its affluence of peace and tranquility, Stonehenge, haunting moors and creaking doors, King Arthur, and Queen Elizabeth.

Joe Adair, a native of Iowa, has lived, worked, or traveled in more than 40 countries in a relentless quest to know the earth and its peoples.

Adair, who holds a master's degree in education, is a graduate of Georgetown University and the University of Northern Iowa.

His travels have included photographic expeditions to Africa, the arctic, Kuwait, India, Kenya, and Ethiopia. The American Junior Chamber of Commerce recently included him in their annual volume of outstanding Young Men of America.

Adair holds a high regard for the inhabitants of the lands he visits and records. To him the country alone conveys little without including the story of the people who have shaped, or been shaped by, that land. In his presentations, the land becomes a backdrop for the lives of people; their daily work and activities, their festivals and festivities, their dreams and aspirations.

Saturday's film is scheduled for 8 p.m. in the Chelsea High school auditorium.

### Showcase Contributed For Historical Items

A showcase to display articles relating to the Chelsea Area Historical Society has been donated to the society by Carl Schneider.

Members of the Historical Society are currently repairing the showcase, and hope to be able to place it soon within some well-frequented area of the village where residents will be certain to see it.

### Walter Mayer Retires

Walter C. Mayer, 60, of Traverse City, has retired from the ranks of Michigan State Police civilian employees.

Mayer, who joined the State Police in 1937, has worked for the force for 37 years and retired Jan. 11.

He is the son of Mrs. Erma Mayer of W. Middle St. and was born in Chelsea.

### Parole Violator Nabbed

Larry D. Stanley, 20437 Sager Rd., was arrested Friday evening on Main St. by Chelsea Patrolman John Dettling for violation of probation.

Stanley was wanted by local officers on a criminal bench warrant on the charge.

## Wrestler of the Week



WRESTLER OF THE WEEK, as chosen by Chelsea grappling coach Richard Bareis, is senior Mike Agopian, who was Chelsea's only champion in the Western High School Invitational Tournament last Saturday. Mike, who finished third in the state last year at 119 pounds, currently boasts a 16-0 record at 126 pounds, with invitational tournament championships this season from Dexter, Howell, and Western. Chelsea placed second in the Western Tournament behind Jackson High school.

### Former Chelsea Girl Earns Realtor License In New Mexico

Carl H. "Dutch" Schwieger, 190 Island Lake Rd., returned Dec. 29 from a two-month vacation in Clovis, N. M., where he visited his daughter, Carlyn, son-in-law Donald Short, and grandson, Timmy.

Highlight of his visit to New Mexico, Schwieger said, was accompanying his daughter, a Chelsea High school graduate, to Albuquerque, N.M., the home of the University of New Mexico. Carlyn had been studying to become a realtor and appeared there before the Supervisory Board of Realtors and obtained her license to deal in real estate.

Persons finding it necessary to ask others to repeat what they have said, should have a hearing test, according to hearing specialists who stress that the inability to clearly hear other persons when they are speaking at a normal level is a common sign of a hearing loss.

### FARLEY CONSTRUCTION

522 HOWARD RD.

ADDITIONS - REMODELING  
HARDWOOD FLOORS  
CONCRETE WORK

475-8265 or 475-7643

LICENSED - INSURED

### TOTH BUILDING and REMODELING

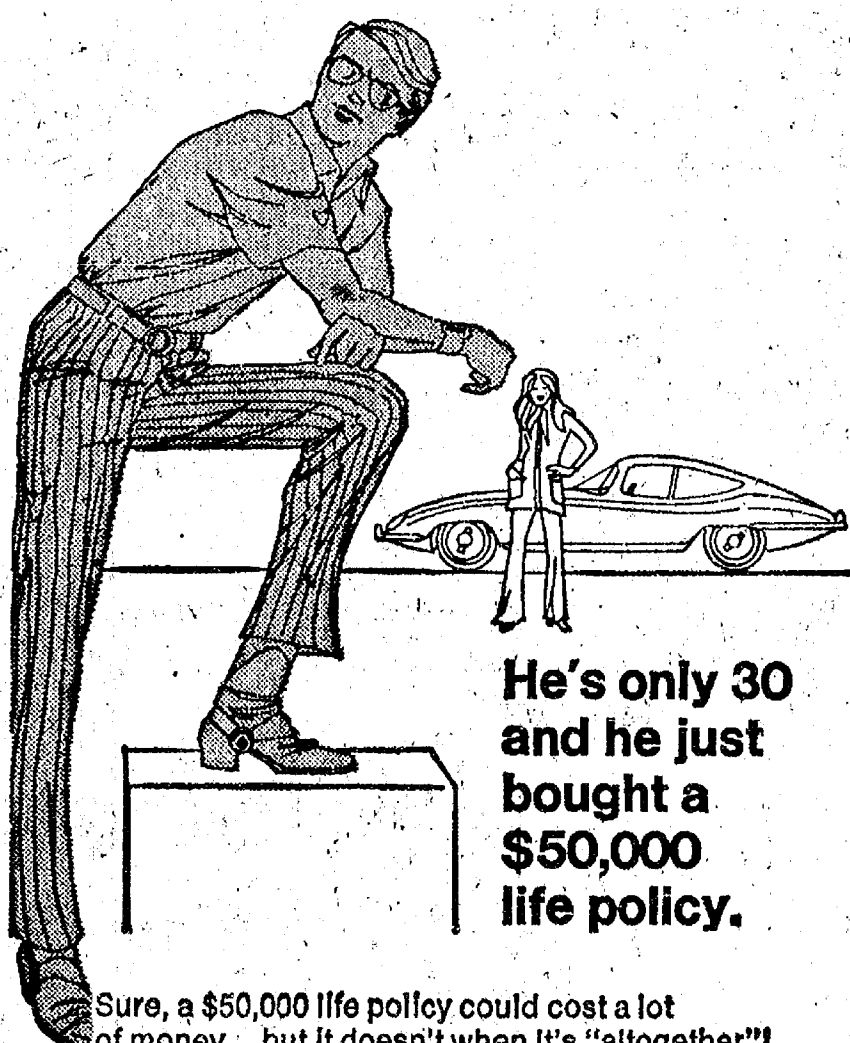
Complete Homes, Rec. Rooms, Additions and Kitchens.

Ph. (313) 498-2178

### California Trip

Donna Brand returned Jan. 4 from a holiday trip to California to visit her sister and brother-in-law, Diane and Jeff Brunson of Hanford. In addition to visiting Hanford, which lies in the center of the San Joaquin Valley 50 miles south of Fresno, Miss Brand took a side trip to the coast, where she took one of the tours at the Hearst castle of San Simeon. She also visited an old mission at San Luis Obispo.

Read The Standard Ads for Regular Bargains!



He's only 30 and he just bought a \$50,000 life policy.

Sure, a \$50,000 life policy could cost a lot of money...but it doesn't when it's "altogether"! When we say "altogether" we mean Perma-Term—permanent and term insurance combined to avoid those big premiums, but still deliver the big protection young family men need. It means you could have a \$50,000 policy which lets you build up a retirement income at the same time! Yes, Perma-Term's easier on the budget, but please remember that costs go up as you grow older. So give us a call now—before another birthday gets past you altogether!

it's better  
**altogether**

A. D. MAYER AGENCY, INC.

115 PARK ST., CHELSEA  
BOB BARLOW, AGENT  
PHONE 475-2030



Auto-Owners Life Insurance Company

## 1/2 PRICE SALE

SPORT COATS, Reg. \$70.00 ..... NOW \$35.00  
SPORT COATS, Reg. \$60.00 ..... NOW \$30.00  
SUITS, Reg. \$90.00 ..... NOW \$45.00  
SUITS, Reg. \$100.00 ..... NOW \$50.00  
SUITS, Reg. \$115.00 ..... NOW \$57.50

LEISURE SUITS, Reg. \$36.00 ..... NOW \$29.80  
LEISURE SUITS, Reg. \$38.50 ..... NOW \$30.20  
LEISURE SUITS, Reg. \$55.00 ..... NOW \$44.00

### VAN HEUSEN SHIRTS

OVER 60 SHIRTS — REG. \$8.50 TO \$13.00

NOW 1/2 OFF

### PURITAN SWEATERS

V-NECK - CARDIGAN - SLEEVELESS

20% OFF

## STRIETER'S MEN'S WEAR

1914 - Our 61st Anniversary - 1975

FRESH DONUTS (Cake and Raised).  
MADE HERE DAILY Home-made sandwiches, too!

## RICK'S MARKET

Just North of Chelsea on M-52

BEER WINE GROCERIES  
FEATURING:  
CASE LOT OFFER to help you fight inflation...

5% Over Our Invoice Price

Approx. 1/2 down with order - balance due when order is picked up. Anything available to us through our Spartan Warehouse is available to you (by the case).

FRESH GERMAN STYLE SAUSAGE & SANDWICH MEATS  
From HANS SAUSAGE HOUSE in Stockbridge

\*BACON from Hans . . delicious lb. \$1.79  
Pre-packaged (i.e. Eckrich, Farmer Peet) lb. \$1.85

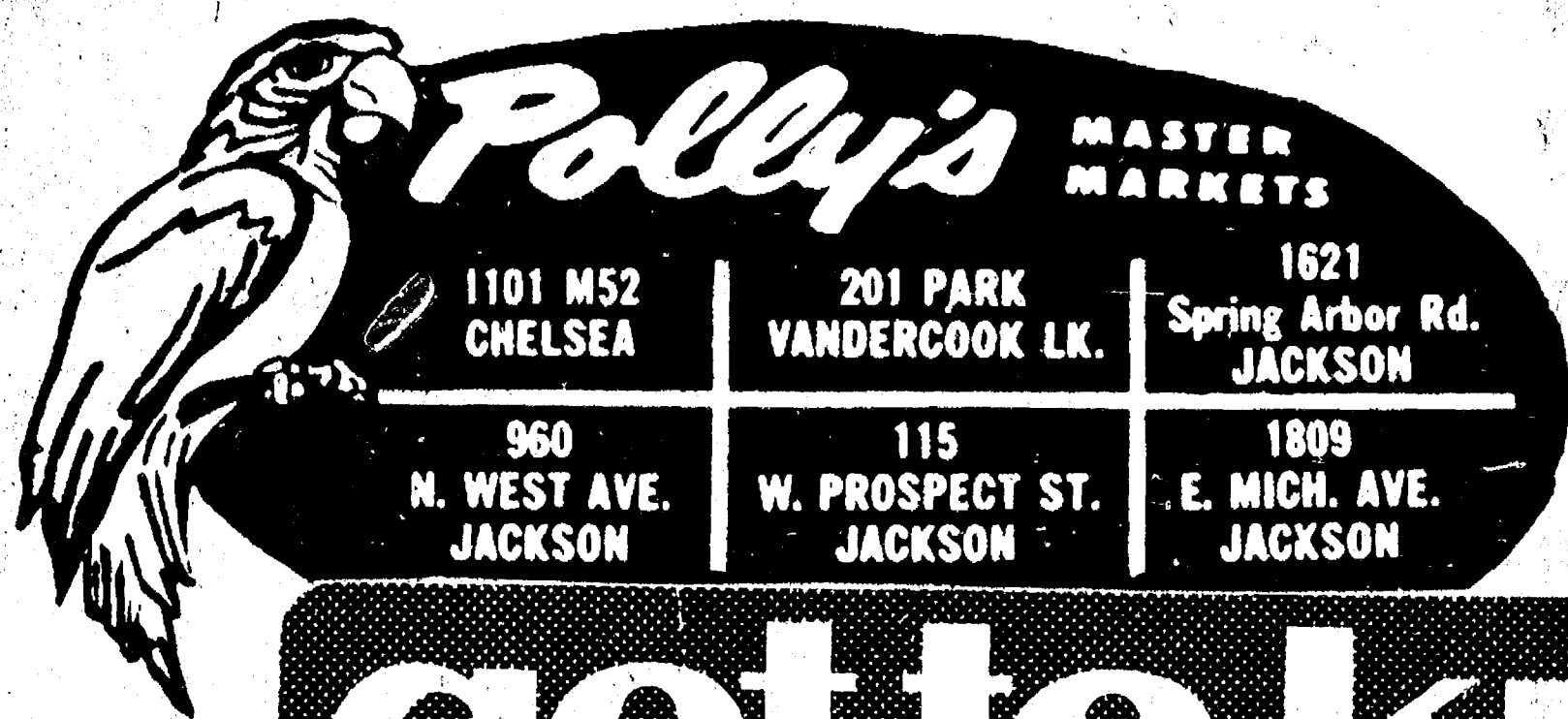
A Growing Variety of Bulk Cheeses

\*BULK SWISS JARLSBURG . . lb. \$1.83  
Pre-packaged Swiss . . . . lb. \$1.98

\*PRE-PACKAGING DOESN'T NECESSARILY MEAN IT'S CHEAPER!

Come, See and Taste for Yourself, Meats and Cheeses, Fresh Over the Counter as in the Good Ol' Days!





# get to know us...

WE CAN HELP YOU SAVE ON YOUR FOOD BILL!

**OPEN .**      **8** A.M. TO **10** P.M.  
**DAILY.**

**OPEN**      **9** A.M. TO **6** P.M.  
**SUNDAY:**

- ★ **QUALITY PRODUCE**
- ★ **QUALITY MEAT**
- ★ **COLD BEER & WINE**
- ★ **LOTTERY TICKETS**
- ★ **SIDES OF BEEF**
- ★ **FRUIT BASKETS**
- ★ **DRY CLEANING**
- ★ **PHOTO PROCESSING**
- ★ **VARIETY AT LOW PRICES**





**Polly's**

MASTER  
MARKETS

1101 M52  
CHELSEA

201 PARK  
VANDERCOOK LK.

1621  
Spring Arbor Rd.  
JACKSON

960  
N. WEST AVE.  
JACKSON

115  
W. PROSPECT ST.  
JACKSON

1809  
E. MICH. AVE.  
JACKSON

DAILY HOURS 8 a.m.-10 p.m.

SUNDAY 9 a.m.-5 p.m.

# Before Inflation Prices

All Prices Effective Thru Sunday, Jan. 19, 1975



SAVE  
21<sup>1</sup>/<sub>2</sub> LB.!

GRADE A WHOLE

**Fryers 38<sup>1</sup>/<sub>2</sub> LB.**

LIMIT 4 PLEASE

CUT-UP  
FRYERS  
**45<sup>1</sup>/<sub>2</sub> lb.**

SAVE  
20<sup>1</sup>/<sub>2</sub> LB.!

LEAN TENDER

**SPARE RIBS**

**89<sup>1</sup>/<sub>2</sub> LB.**

*Deli  
Treats!*

BULK SMOKED OR  
**POLISH  
SAUSAGE**..... LB.

**\$1.29**

**SAVE UP TO \$15.41**

WITH IN-STORE COUPONS,  
PLUS COUPONS IN THIS AD

BUY 1 SAVE 10 <sup>1</sup> / <sub>2</sub>	KEEBLER DELUXE <b>GRAHAMS</b> .....	13.5-OZ. <b>89<sup>1</sup>/<sub>2</sub></b>
BUY 2 SAVE 40 <sup>1</sup> / <sub>2</sub>	SEALTEST <b>COTTAGE CHEESE</b> .....	12-OZ. <b>39<sup>1</sup>/<sub>2</sub></b>
BUY 1 SAVE 50 <sup>1</sup> / <sub>2</sub>	NO-RETURN <b>8-PAK COKE</b> .....	16-OZ. <b>\$1.49</b>
BUY 2 SAVE 40 <sup>1</sup> / <sub>2</sub>	GLACIER CLUB <b>ICE CREAM</b> .....	1/2-GAL. <b>77<sup>1</sup>/<sub>2</sub></b>
BUY 5 SAVE 25 <sup>1</sup> / <sub>2</sub>	SCOT LAD <b>ORANGE JUICE</b> .....	5 6-OZ. CANS for <b>\$1.00</b>
BUY 4 SAVE 88 <sup>1</sup> / <sub>2</sub>	BANQUET <b>DINNERS</b> .....	11-OZ. <b>43<sup>1</sup>/<sub>2</sub></b>
BUY 1 SAVE 60 <sup>1</sup> / <sub>2</sub>	TODDLER DAYTIME <b>KIMBIES</b> .....	24-CT. <b>\$1.69</b>
BUY 1 SAVE 38 <sup>1</sup> / <sub>2</sub>	HILLS BRS. <b>COFFEE</b> .....	3-LB. <b>\$2.61</b>
BUY 2 SAVE 60 <sup>1</sup> / <sub>2</sub>	DISINFECTANT SPRAY <b>LYSOL</b> .....	14-OZ. <b>\$1.19</b>
BUY 3 SAVE 30 <sup>1</sup> / <sub>2</sub>	CARESS <b>BAR SOAP</b> .....	3 BATH for <b>99<sup>1</sup>/<sub>2</sub></b>
BUY 1 SAVE 20 <sup>1</sup> / <sub>2</sub>	FURNITURE POLISH <b>GRAHAMS</b> .....	12-OZ. <b>89<sup>1</sup>/<sub>2</sub></b>
SAVE 10 <sup>1</sup> / <sub>2</sub>	POLLY'S <b>POTATO CHIPS</b> .....	11-OZ. <b>59<sup>1</sup>/<sub>2</sub></b>
BUY 1 SAVE 20 <sup>1</sup> / <sub>2</sub>	FARMER PEETS <b>HOT DOGS</b> .....	1-LB. <b>89<sup>1</sup>/<sub>2</sub></b>
BUY 1 SAVE 20 <sup>1</sup> / <sub>2</sub>	FARMER PEETS <b>SAUSAGE</b> .....	1-LB. <b>79<sup>1</sup>/<sub>2</sub></b>
BUY 1 SAVE 20 <sup>1</sup> / <sub>2</sub>	FARMER PEETS <b>LUNCH MEAT</b> .....	1-LB. <b>\$1.09</b>
BUY 1 SAVE 10 <sup>1</sup> / <sub>2</sub>	ON ANY 1-LB. PKG. <b>BACON</b> .....	<b>10<sup>1</sup>/<sub>2</sub></b> off
BUY 2 SAVE \$3.00	BEAUTIFUL <b>ALUMINUM FRAMES</b> .....	22"x28" <b>\$4.99</b>
BUY 2 SAVE \$2.00	FAMOUS <b>ART REPRODUCTIONS</b> .....	22"x28" <b>\$1.49</b>



SAVE 40<sup>1</sup>/<sub>2</sub>  
SEALTEST

W/IN-STORE  
COUPON

**COTTAGE  
CHEESE**.....

12-OZ.

**39<sup>1</sup>/<sub>2</sub>**

SAVE 50<sup>1</sup>/<sub>2</sub>  
NO-RETURN

W/IN-STORE  
COUPON

**8-PAK  
COKE**.....

16-OZ.

**\$1.49**

SAVE 60<sup>1</sup>/<sub>2</sub>  
TODDLER DAYTIME

W/IN-STORE  
COUPON

**KIMBIES  
DIAPERS**.....

24-CT.

**\$1.69**

SAVE 38<sup>1</sup>/<sub>2</sub>  
HILLS BRS.

W/IN-STORE  
COUPON

**3-LB.  
COFFEE**.....

**\$2.61**

SAVE 18<sup>1</sup>/<sub>2</sub>  
CARNATION

**COFFEE  
MATE**.....

16-OZ.

**99<sup>1</sup>/<sub>2</sub>**

SAVE 9<sup>1</sup>/<sub>2</sub>  
GOLD MEDAL

**5-LB.  
FLOUR**.....

**79<sup>1</sup>/<sub>2</sub>**

EVERYDAY LOW!  
ORANGE & GRAPE

**HI-C  
DRINKS**.....

46-OZ.

**44<sup>1</sup>/<sub>2</sub>**

SAVE 80<sup>1</sup>/<sub>2</sub>  
DISINFECTANT

UP W/IN-STORE  
TO COUPON

**LYSOL  
SPRAY**.....

14-OZ.

**\$1.19**

# Before Inflation Prices...

TAYLOR WHOLE or SLICED

**IRISH  
POTATOES**.....

4 16-OZ. CANS for **\$1.00**

BROOKS HOT

**CHILI  
BEANS**.....

303 can **31<sup>1</sup>/<sub>2</sub>**

SEALTEST 2%

**VITA-LURE  
MILK**.....

2 1/2-GALS. for **\$1.29**

HOLSUM 10<sup>1</sup>/<sub>2</sub> OFF

**WHEAT  
BREAD**.....

1-LB. **54<sup>1</sup>/<sub>2</sub>**

POLLY'S "A"

**MEDIUM  
EGGS**.....

DOZ.

**59<sup>1</sup>/<sub>2</sub>**

KRAFT

**CHEEZ-  
WHIZ**.....

16-OZ.

**99<sup>1</sup>/<sub>2</sub>**

WEST AVE. & SPRING ARBOR RD.  
*Snack Bar*  
SPECIAL of the WEEK!  
**HOT DOG  
POTATO CHIPS & COKE**  
only **79<sup>1</sup>/<sub>2</sub>**

YUMMIE DRY <b>DOG FOOD</b> .....	25-LB.	<b>\$3.99</b>
CARNATION <b>COCOA MIX</b> .....	30-OZ.	<b>\$1.79</b>
SCOT LAD <b>ASPARAGUS</b> .....	16-OZ.	<b>49<sup>1</sup>/<sub>2</sub></b>
SCOT LAD <b>SHORTENING</b> .....	3-LB.	<b>\$1.69</b>
PILLSBURY <b>CAKE MIX</b> .....	19-OZ.	<b>51<sup>1</sup>/<sub>2</sub></b>
POLLY'S <b>BOOK MATCHES</b> .....	50-CT.	<b>21<sup>1</sup>/<sub>2</sub></b>
KRAFT <b>VELVEETA</b> .....	2-LB.	<b>\$1.49</b>

20 <sup>1</sup> / <sub>2</sub> OFF <b>CASCADE</b> .....	50-OZ.	<b>99<sup>1</sup>/<sub>2</sub></b>
HEFTY SMALL WASTEBASKET <b>ALL-PURPOSE BAG</b> .....	30-CT.	<b>69<sup>1</sup>/<sub>2</sub></b>
SUGAR SUBSTITUTE <b>SWEET-N-LOW</b> .....	3-OZ.	<b>\$1.03</b>
25 <sup>1</sup> / <sub>2</sub> OFF <b>MR. CLEAN</b> .....	40-OZ.	<b>\$1.07</b>
SCOT <b>TOWELS</b> .....	TWIN PAK	<b>65<sup>1</sup>/<sub>2</sub></b>
COMET <b>CLEANSER</b> .....	4-PK.	<b>59<sup>1</sup>/<sub>2</sub></b>
SOFT-MAXI-CUP <b>PARKAY</b> .....	1-LB.	<b>69<sup>1</sup>/<sub>2</sub></b>



50,000 WEEKLY CUSTOMERS PUT SOME B.I.P. IN THEIR BUDGET AT POLLY'S

# Means the **LOWEST** meat prices in town!

## Don't Settle For Less....

### Buy POLLY'S PRIDE TOP QUALITY BEEF!

We are proud to offer you the finest beef available at the lowest prices in town. Meat is 25% of your shopping budget... and that is why it is so important for you to buy your meat at Polly's. When you receive first quality beef for less, Why go anywhere else?

SAVE 31' LB. POLLY'S PRIDE STEW MEAT	LB.	\$118	SAVE 21' LB. POLLY'S PRIDE GROUND CHUCK	LB.	\$108
SAVE 21' LB. POLLY'S PRIDE GROUND ROUND	LB.	\$118	SAVE 20' LB. FARMER PEETS BONANZA HAM	LB.	\$139
SAVE 20' ECKRICH SMOKIE LINKS	10-OZ. PKG.	79¢	SAVE 20' ECKRICH ALL BEEF HOT DOGS	1-LB. PKG.	99¢
SAVE \$1.00 FARMERLAND CANNED HAM	5-LB.	\$6.99	SAVE 30' HERRUD HOT DOGS	2-LB. PKG.	\$1.89



## Polly Pride STEAK SALE!

SAVE 51' LB. SIRLOIN	LB.	\$1.28
SAVE 51' LB. T-BONE	LB.	\$1.48
SAVE 51' LB. PORTERHOUSE	LB.	\$1.58
SAVE 61' LB. N.Y. STRIPS	LB.	\$2.28

SAVE 20' W/IN-STORE COUPON FARMER PEETS HOT DOGS	1-lb.	89¢
SAVE 20' W/IN-STORE COUPON FARMER PEETS SAUSAGE	1-lb.	79¢
SAVE 20' W/IN-STORE COUPON FARMER PEETS LUNCH MEAT	1-lb.	\$1.09



## Polly Pride FREEZER BEEF!

WHOLE BEEF SIDES	LB.	69¢
WHOLE BEEF ROUNDS	LB.	89¢
WHOLE BEEF CHUCKS	LB.	69¢

## Health & Beauty Aids!



7-OZ. **77¢**



20c OFF 13-OZ. **ADORN HAIR SPRAY**

**\$1.19**

Save 40c 7.5 OZ. **YUCCA DEW SHAMPOO**

**99¢**



35c OFF 7-OZ. **PRELL CONCENTRATE**

**\$1.27**

35c OFF 16-OZ. **PRELL LIQUID**

**\$1.27**

Save 20c **CAPRI-FOAM BATH OIL**

32-OZ. **69¢**

Save 33c W/IN-STORE COUPON **CONGESPIN**

36-CT. **39¢**

## ALL ABOUT FOOD



F. A. KENNEDY

Can you imagine being arrested for eating a sausage? Well, there was a time, back in ancient Rome, when you could have been. It seems that sausage was served in abundance at those famous Roman banquets. And when Constantine the Great became emperor of Rome and converted to Christianity, he not only put a stop to the banquets, he banned sausage eating.

This, of course, only whetted people's appetite for sausage. Public protests were staged and bootlegging was widespread. The edict was cancelled. Which only goes to show that protest marches might not be as new as we think.

By the way, if you're surprised that sausage has been around that long, don't be. Sausage is actually referred to in Homer's Odyssey, written nearly ten centuries before the birth of Christ. From earliest times, it has been part of the diet of peoples in all parts of the world.

In America today, frankfurters and wieners are by far our most popular form of sausage. In fact, the American Meat Institute estimates that we eat 80 wieners and franks per person annually.

Sausage has also, for some reason, been the subject of many a bad joke, the worst (or worst) of which just has to be the one about the butcher who was caught stuffing sawdust into one end of a wiener and explained that it was "hard to make both ends meet!"

And with that I'll leave you, adding only that Polly's offers an exceptionally fine and complete selection of sausages. And when you compare costs, you'll find that our low prices do indeed help you "make both ends meet!"

## FRESH Baked Goods!

"Don't Settle For Less than Fresh Daily!"

Save 40¢

FRESHLY BAKED **APPLE PIE**

8" **99¢**



1-LB. LOAF HOMEMADE **WHITE BREAD**

**39¢**

DOZEN **POTATO ROLLS**

**59¢**

YEAST-RAISED **GLAZED DONUTS**

6 for **69¢**

SAVE 40¢ W/IN-STORE COUPON 1/2-GAL.

**ICE CREAM**

**77¢**

SAVE 36¢

JOHNS ASST. **3-PAK PIZZAS**

16-OZ. **99¢**

SAVE 88¢ W/IN-STORE COUPON 11-OZ.

**BANQUET DINNERS**

**43¢**

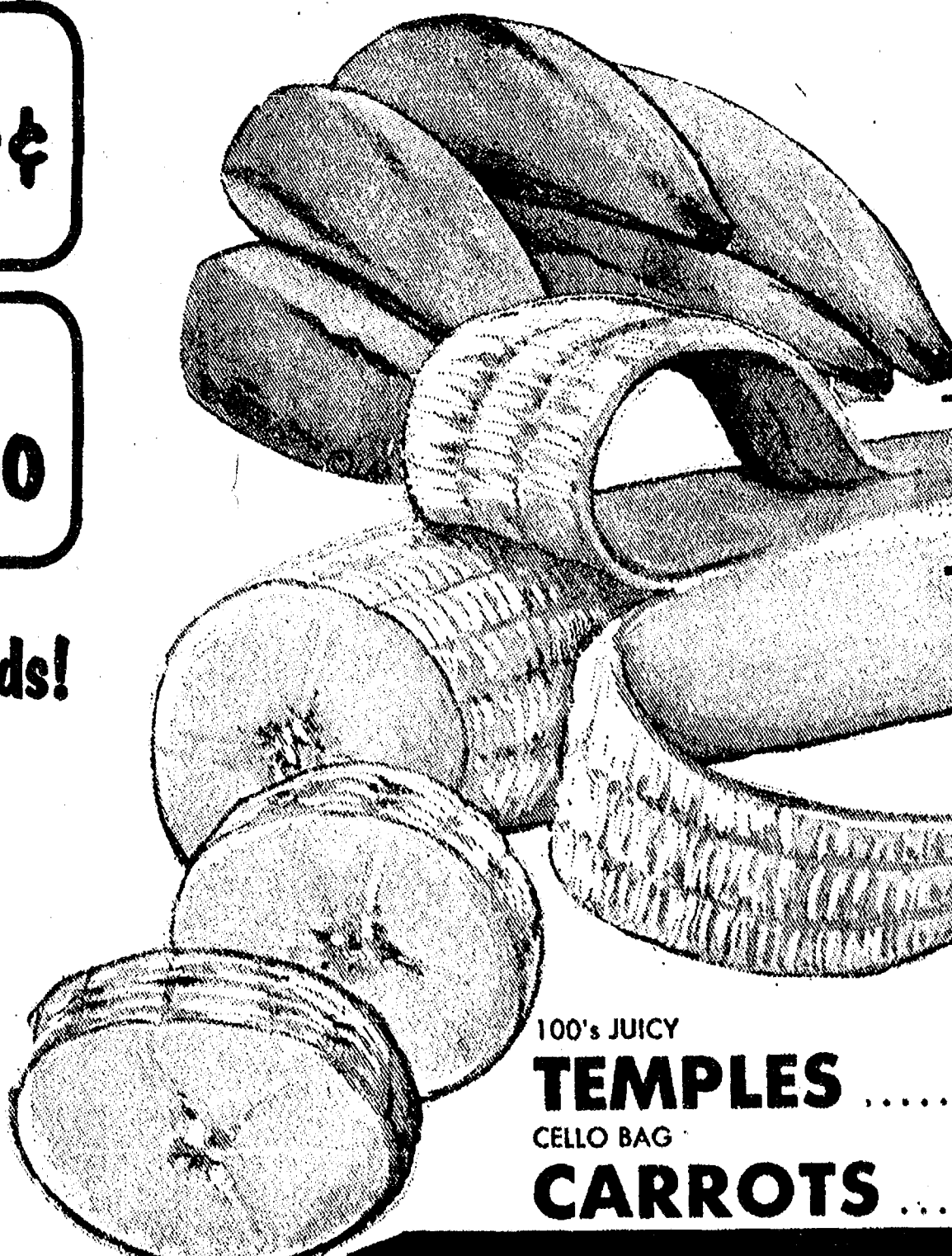
SAVE 25¢ W/IN-STORE COUPON 6-OZ. CANS

**ORANGE JUICE**

**\$1.00**

## more... B.I.P. frozen foods!

SAVE 20' BOOTH SHRIMP STICKS	9-OZ.	79¢
SAVE 20' BOOTH HADDOCK FILLETS	16-OZ.	\$1.29
SAVE 10' DUTCH APPLE & PEACH HARRIS PIES	8-IN.	89¢
SAVE 14' RICHES PANCAKE BATTER	16-OZ.	49¢
SAVE 16' QUEEN OF SCOT CAULIFLOWER	20-OZ.	79¢
SAVE 10' QUEEN OF SCOT BRUSSEL SPROUTS	20-OZ.	79¢
SAVE 20' GREEN GIANT STUFFED PEPPERS	14-OZ.	79¢
SAVE 20' GREEN GIANT SALISBURY STEAK	14-OZ.	79¢
SAVE 10' BIRD'S EYE PLAS & PEARL ONIONS	10-OZ.	39¢
SAVE 10' BIRD'S EYE PLAS W/CREAM SAUCE	8-OZ.	39¢



## quality fresh Produce!

GOLDEN RIPE CHIQUITA

**BANANAS**  
**15¢** LB.

100's JUICY **TEMPLES** ..... DOZ.

**79¢**

CELLO BAG

**CARROTS** ..... 1-LB.

**19¢**

CRISP SOLID

**CABBAGE** ..... LB.

**15¢**

CRISP CAL.

**CELERY** ..... STALK

**39¢**



# Thank You

**FOR SHOPPING AT...**



**WHERE WE ARE  
HAPPY TO.....**

**save** **YOU MONEY!**